



MLS 7011187 Residential

\$415,000

1,554 sq ft
3 bedrooms
2 baths

50742 County Highway 53
Perham MN 56573

Status: Active

Description:

Newer 2019-built home set in a stunning rural location just 10 miles northeast of Perham, MN. This well-designed 3-bedroom, 2-bath residence offers an open, functional layout highlighted by a spacious primary suite featuring a huge tiled walk-in shower. Main-floor laundry and an attached, insulated garage add everyday convenience. The unfinished full basement provides excellent future potential, already equipped with two egress windows and plumbing for an additional bathroom—ideal for expanding living space or adding value. 3.86 Acres surveyed parcel with plenty of room for outdoor activities, all with tar road access for easy year-round travel. Even better, a large state land property just 1/4 mile south offering even more room to explore. Whether you're looking for a peaceful country home, a recreational retreat, or a place to grow into, this property truly has it all.

Additional Details:

Year Built	2019
Lot Acres	3.86
Lot Dimensions	3.86 Acres
Garage Stalls	2
School District	1955
Taxes	\$1,536
Taxes with Assessments	\$1,536
Tax Year	2025

Additional Features:

Basement: Drain Tiled, Egress Window(s), Full, Concrete, Unfinished **Fuel:** Array **Garage:** 2 **Heat:** Forced Air **Sewer:** Tank with Drainage Field **Water:** Drilled **Air Conditioning:** Central Air

Driving Directions:

NE of Perham On Hwy 8 to 53 North. 10 miles from Perham



Listed By:
New Horizons Realty Of Perham

Affinity Real Estate Inc. participates in the Regional Multiple Listing Service of Minnesota, Inc Broker Reciprocity (sm) program, allowing us to display other broker's listings on our website. All properties are subject to prior sale, change or withdrawal.



Call Affinity Real Estate

218-237-3333

info@affinityrealestate.com



Affinity Real Estate - 600 Park Avenue South - Park Rapids MN 56470



website: www.AffinityRealEstate.com | email: info@affinityrealestate.com | office: 218-237-3333 | fax:218-237-3377

Affinity
REAL ESTATE INC

\$415,000
MLS 7011187 Residential
50742 County Highway 53
Perham MN 56573



website: www.AffinityRealEstate.com | email: info@affinityrealestate.com | office: 218-237-3333 | fax:218-237-3377



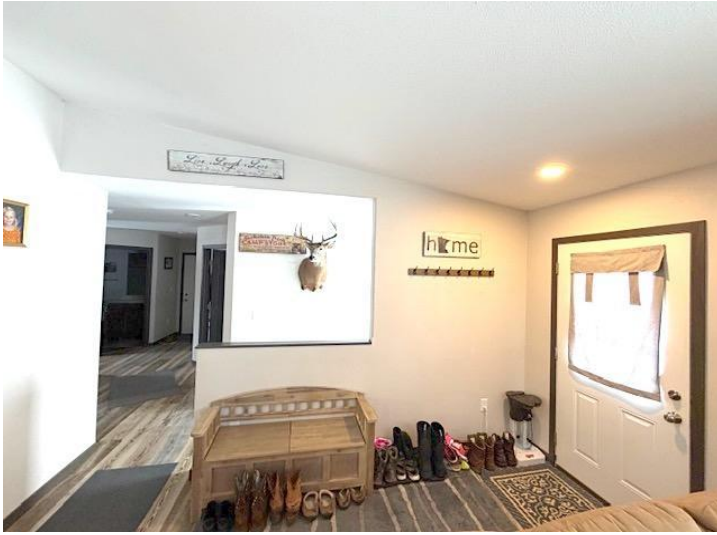
\$415,000
MLS 7011187 Residential
50742 County Highway 53
Perham MN 56573



website: www.AffinityRealEstate.com | email: info@affinityrealestate.com | office: 218-237-3333 | fax: 218-237-3377

Affinity
REAL ESTATE INC

\$415,000
MLS 7011187 Residential
50742 County Highway 53
Perham MN 56573



website: www.AffinityRealEstate.com | email: info@affinityrealestate.com | office: 218-237-3333 | fax:218-237-3377

Affinity
REAL ESTATE INC

\$415,000
MLS 7011187 Residential
50742 County Highway 53
Perham MN 56573



website: www.AffinityRealEstate.com | email: info@affinityrealestate.com | office: 218-237-3333 | fax: 218-237-3377

Affinity
REAL ESTATE INC

\$415,000
MLS 7011187 Residential
50742 County Highway 53
Perham MN 56573



website: www.AffinityRealEstate.com | email: info@affinityrealestate.com | office: 218-237-3333 | fax:218-237-3377



\$415,000
MLS 7011187 Residential
50742 County Highway 53
Perham MN 56573



website: www.AffinityRealEstate.com | email: info@affinityrealestate.com | office: 218-237-3333 | fax:218-237-3377



\$415,000
MLS 7011187 Residential
50742 County Highway 53
Perham MN 56573