



MLS 7011263 Residential

\$1,199,900

1,680 sq ft
3 bedrooms
2 baths

9091 52nd Street
Verndale MN 56481

Status: Active

Description:

Set on over 200 acres of pristine countryside, this private ranch estate offers the ultimate blend of equestrian excellence, outdoor recreation, and peaceful rural living. The 3-bedroom, 2-bath home, built in 2000, provides comfortable one-level living in a secluded setting surrounded by pasture, tillable land, and natural beauty. Designed with horse enthusiasts in mind, the property features a 12-stall stable equipped with an automatic water system and a large indoor riding arena, allowing for year-round training and riding regardless of the season. Expansive pasture and tillable acreage offer flexibility for livestock, farming, or hay production.

Two private ponds enhance both the scenery and recreational appeal, while abundant wildlife and vast acreage make this an ideal property for hunting and outdoor enjoyment. Whether your vision includes riding at sunrise, managing productive farmland, or enjoying unmatched privacy and self-sufficiency, this property delivers it all. Rarely does an opportunity arise that combines premium equestrian facilities, productive land, recreational potential, and complete privacy.

Additional Details:

Year Built	2000
Lot Acres	207.57
Lot Dimensions	Acres
Garage Stalls	2
School District	1062
Taxes	\$1,088
Taxes with Assessments	\$1,154
Tax Year	2025

Additional Features:

Basement: Block, Full, Storage Space, Unfinished, Walkout **Fuel:** Array **Garage:** 2 **Heat:** Forced Air **Sewer:** Private Sewer, Septic System Compliant - Yes **Water:** Drilled, Well **Air Conditioning:** Central Air

Driving Directions:

From Oylen, continue on County Road 7 a few miles to a left on Cass Line Road to a right on 52nd St.



Listed By:
Hinkle Realty

Affinity Real Estate Inc. participates in the Regional Multiple Listing Service of Minnesota, Inc Broker Reciprocity (sm) program, allowing us to display other broker's listings on our website. All properties are subject to prior sale, change or withdrawal.



Call Affinity Real Estate

218-237-3333

info@affinityrealestate.com



Affinity Real Estate - 600 Park Avenue South - Park Rapids MN 56470



website: www.AffinityRealEstate.com | email: info@affinityrealestate.com | office: 218-237-3333 | fax:218-237-3377



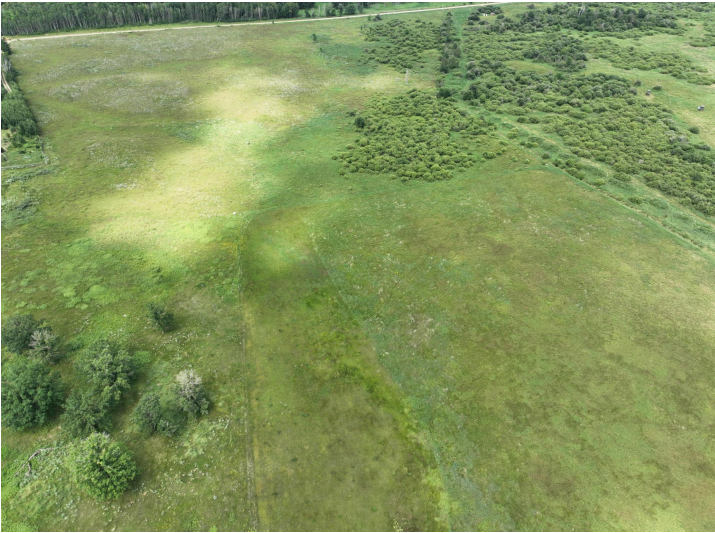
\$1,199,900
MLS 7011263 Residential
9091 52nd Street
Verndale MN 56481



website: www.AffinityRealEstate.com | email: info@affinityrealestate.com | office: 218-237-3333 | fax:218-237-3377

Affinity
REAL ESTATE INC

\$1,199,900
MLS 7011263 Residential
9091 52nd Street
Verndale MN 56481



website: www.AffinityRealEstate.com | email: info@affinityrealestate.com | office: 218-237-3333 | fax:218-237-3377



\$1,199,900
MLS 7011263 Residential
9091 52nd Street
Verndale MN 56481



website: www.AffinityRealEstate.com | email: info@affinityrealestate.com | office: 218-237-3333 | fax: 218-237-3377

Affinity
REAL ESTATE INC

\$1,199,900
MLS 7011263 Residential
9091 52nd Street
Verndale MN 56481



website: www.AffinityRealEstate.com | email: info@affinityrealestate.com | office: 218-237-3333 | fax:218-237-3377

Affinity
REAL ESTATE INC

\$1,199,900
MLS 7011263 Residential
9091 52nd Street
Verndale MN 56481



Galaxy S22 Ultra



Galaxy S22 Ultra

website: www.AffinityRealEstate.com | email: info@affinityrealestate.com | office: 218-237-3333 | fax:218-237-3377



\$1,199,900
MLS 7011263 Residential
9091 52nd Street
Verndale MN 56481



Galaxy S22 Ultra



Galaxy S22 Ultra



Galaxy S22 Ultra



Galaxy S22 Ultra

website: www.AffinityRealEstate.com | email: info@affinityrealestate.com | office: 218-237-3333 | fax:218-237-3377



\$1,199,900
MLS 7011263 Residential
9091 52nd Street
Verndale MN 56481

website: www.AffinityRealEstate.com | email: info@affinityrealestate.com | office: 218-237-3333 | fax:218-237-3377



\$1,199,900

MLS 7011263 Residential
9091 52nd Street
Verndale MN 56481

website: www.AffinityRealEstate.com | email: info@affinityrealestate.com | office: 218-237-3333 | fax:218-237-3377



\$1,199,900
MLS 7011263 Residential
9091 52nd Street
Verndale MN 56481

website: www.AffinityRealEstate.com | email: info@affinityrealestate.com | office: 218-237-3333 | fax:218-237-3377



\$1,199,900

MLS 7011263 Residential
9091 52nd Street
Verndale MN 56481

website: www.AffinityRealEstate.com | email: info@affinityrealestate.com | office: 218-237-3333 | fax:218-237-3377



\$1,199,900
MLS 7011263 Residential
9091 52nd Street
Verndale MN 56481