

MLS 7011370 Land

**\$350,000**

13.04 Acres  
Raw Land

221 Michael Street  
Hawley MN 56549

Status: Active

#### Description:

Excellent commercial building lots in a highly visible area in Hawley. Lots can be sold separately or as one. No restrictive convenance. City approval.

#### Additional Details:

Lot Acres	13.04
Lot Dimensions	Acres
School District	825
Taxes	\$110
Taxes with Assessments	\$110
Tax Year	2025

#### Additional Features:

#### Driving Directions:

Hwy 10 in Hawley, Michael St. S turn by Olson Pool.



Listed By:  
Action Realty of Detroit Lakes

Affinity Real Estate Inc. participates in the Regional Multiple Listing Service of Minnesota, Inc Broker Reciprocity (sm) program, allowing us to display other broker's listings on our website. All properties are subject to prior sale, change or withdrawal.



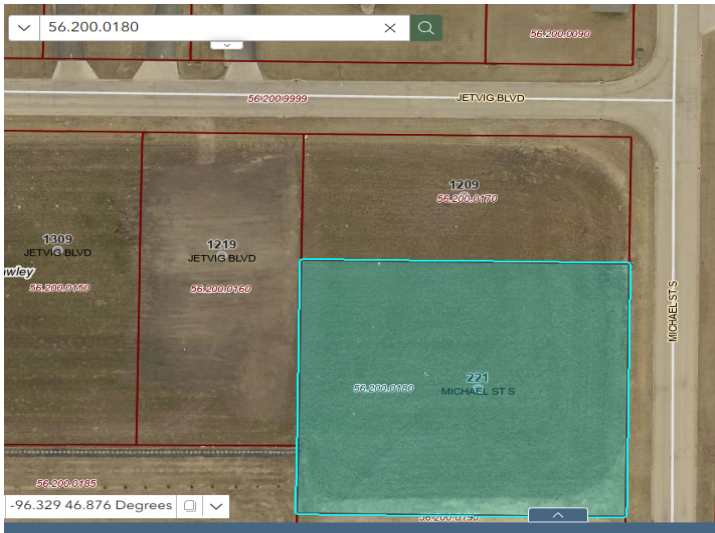
Call Affinity Real Estate

**218-237-3333**

[info@affinityrealestate.com](mailto:info@affinityrealestate.com)



Affinity Real Estate - 600 Park Avenue South - Park Rapids MN 56470



website: [www.AffinityRealEstate.com](http://www.AffinityRealEstate.com) | email: [info@affinityrealestate.com](mailto:info@affinityrealestate.com) | office: 218-237-3333 | fax: 218-237-3377



**\$350,000**  
MLS 7011370 Land  
221 Michael Street  
Hawley MN 56549