



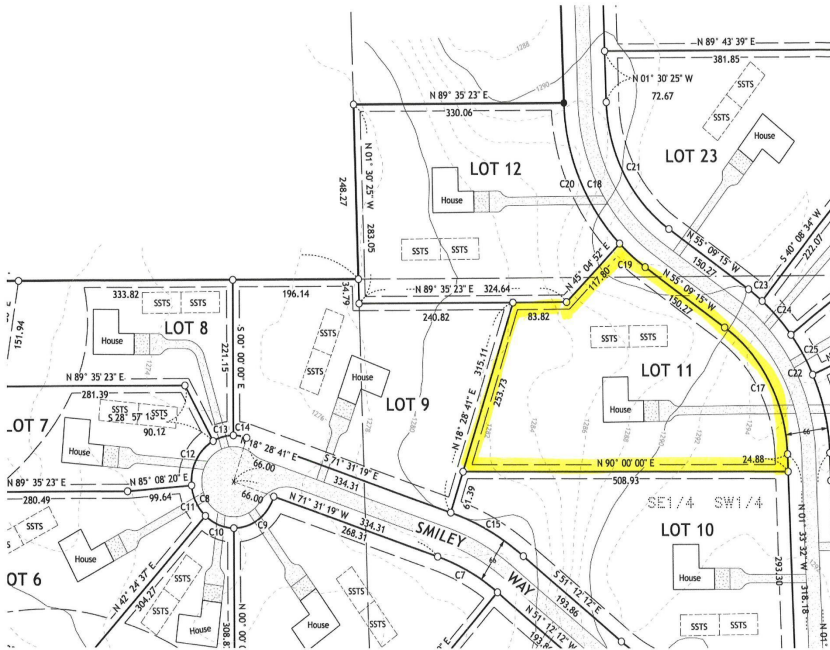
MLS 7011556 Land

\$67,500

2.5 Acres
Finished Lot(s)

X11 TBD My Abbys Way Lane
Pequot Lakes MN 56472

Status: Active



Description:

New residential neighborhood in the heart of the Nisswa and Pequot Lakes area. Nicely wooded 2.25+ acre lots are designed to offer peace and privacy in a rural setting and a great location for your new home. New streets are now paved and ditches hydroseeded, quiet streets without through traffic. Crow Wing Power and TDS Fiber Optics available at street. Drive through anytime! Parcels other than those in MLS may be available at this time. Close to Gull Lake, Pillsbury State forest, Pelican lake, championship golf and all the lakes area has to offer. See covenants and plat in supplements.

Additional Details:

| | |
|------------------------|--------------------|
| Lot Acres | 2.5 |
| Lot Dimensions | 350x508x253x83x117 |
| School District | 909 |
| Taxes | \$58 |
| Taxes with Assessments | \$58 |
| Tax Year | 2025 |

Additional Features:

Driving Directions:

From Nisswa, North on Hwy 371 to Left on Co Rd 29 (Wilderness Rd) to Right on Co Rd 78 (17th Ave) to Left on 72nd St SW, first left on Smiley Way to sign.



Listed By:
Kurilla Real Estate LTD

Affinity Real Estate Inc. participates in the Regional Multiple Listing Service of Minnesota, Inc Broker Reciprocity (sm) program, allowing us to display other broker's listings on our website. All properties are subject to prior sale, change or withdrawal.



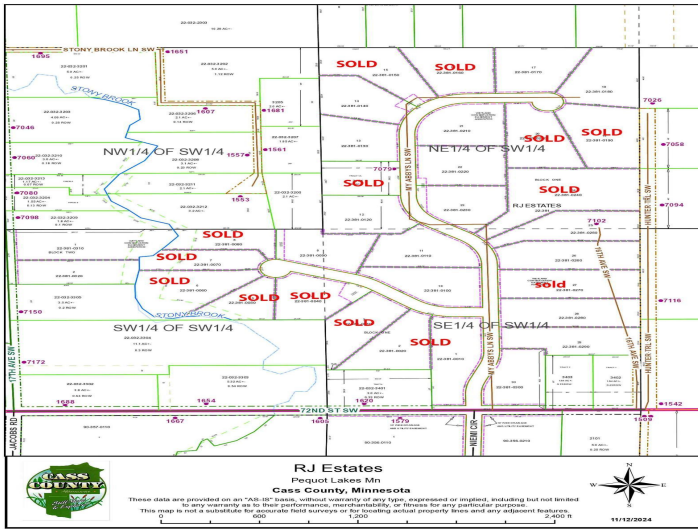
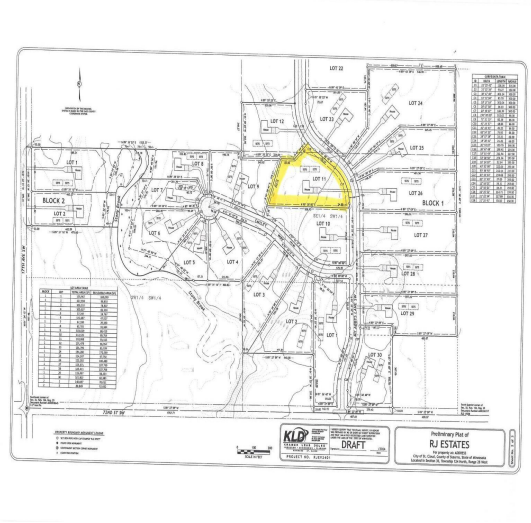
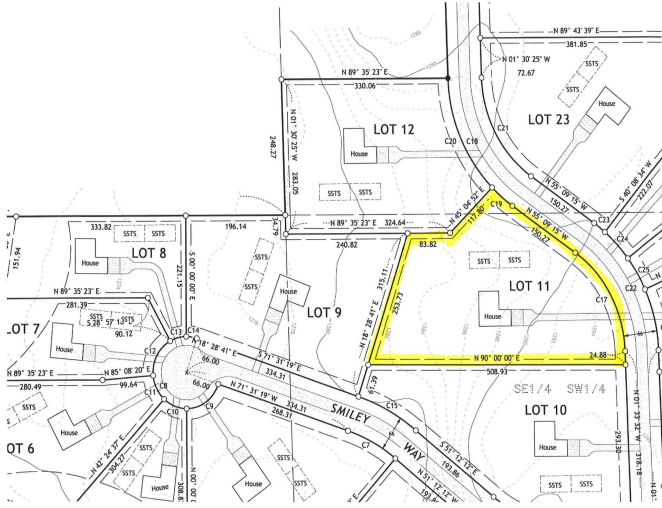
Call Affinity Real Estate

218-237-3333

info@affinityrealestate.com



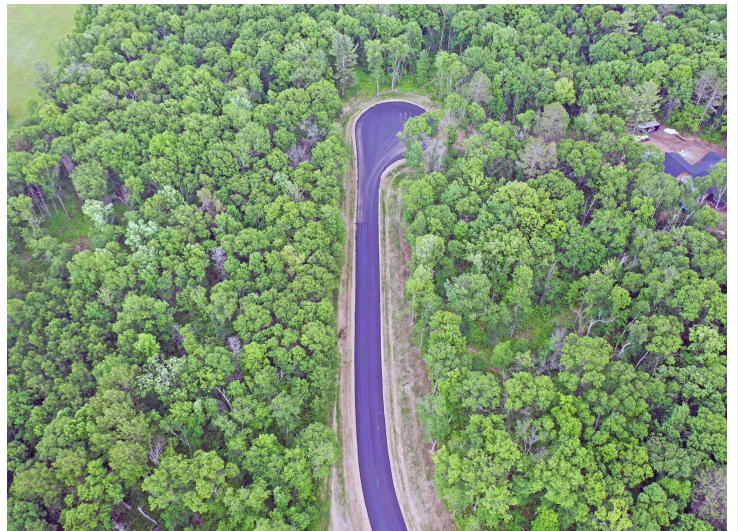
Affinity Real Estate - 600 Park Avenue South - Park Rapids MN 56470



website: www.AffinityRealEstate.com | email: info@affinityrealestate.com | office: 218-237-3333 | fax: 218-237-3377



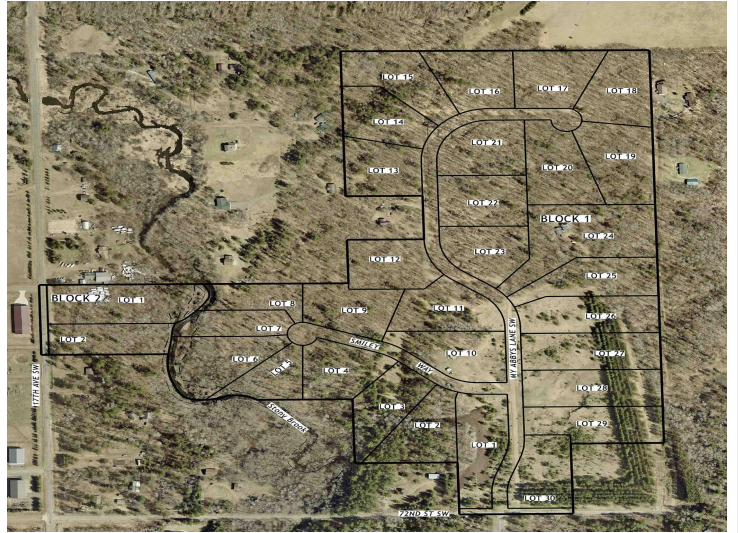
\$67,500
 MLS 7011556 Land
 X11 TBD My Abbyss Way
 Lane
 Pequot Lakes MN 56472



website: www.AffinityRealEstate.com | email: info@affinityrealestate.com | office: 218-237-3333 | fax: 218-237-3377



\$67,500
 MLS 7011556 Land
 X11 TBD My Abbys Way
 Lane
 Pequot Lakes MN 56472



website: www.AffinityRealEstate.com | email: info@affinityrealestate.com | office: 218-237-3333 | fax: 218-237-3377



\$67,500
 MLS 7011556 Land
 X11 TBD My Abbys Way
 Lane
 Pequot Lakes MN 56472