



MLS 7011823 Residential

\$270,000

1,296 sq ft
3 bedrooms
2 baths

4209 State 210
Pillager MN 56473

Status: Active

Description:

Sitting on 5 acres along the Pillager creek, this turn key 3bed 2bath home is located in the sought after Pillager School District and just minutes from Baxter!

New flooring throughout almost the entire home, new roof in 2019, new furnace in 2021, and a new master bath shower in 2025...this property is set up for years of maintenance free living.

In addition to the almost 1,300sqft home, there is a 24x36 fully finished and heated pole building for year round storage.

Adjacent 2.5 acre lot to the west with a PID of 41-528-0210 can also be purchase for an additional amount.

Don't miss this great opportunity!

Additional Details:

Year Built	2000
Lot Acres	5
Lot Dimensions	393x242xirreg
Garage Stalls	2
School District	726
Taxes	\$976
Taxes with Assessments	\$1,042
Tax Year	2025

Additional Features:

Basement: None **Fuel:** Array **Garage:** 2 **Heat:** Forced Air **Sewer:** Mound Septic, Private Sewer **Water:** Sand Point **Air Conditioning:** Central Air

Driving Directions:

Hwy 210 west from Baxter to sign on left #4209.



Listed By:
Real Broker, LLC

Affinity Real Estate Inc. participates in the Regional Multiple Listing Service of Minnesota, Inc Broker Reciprocity (sm) program, allowing us to display other broker's listings on our website. All properties are subject to prior sale, change or withdrawal.



Call Affinity Real Estate

218-237-3333

info@affinityrealestate.com



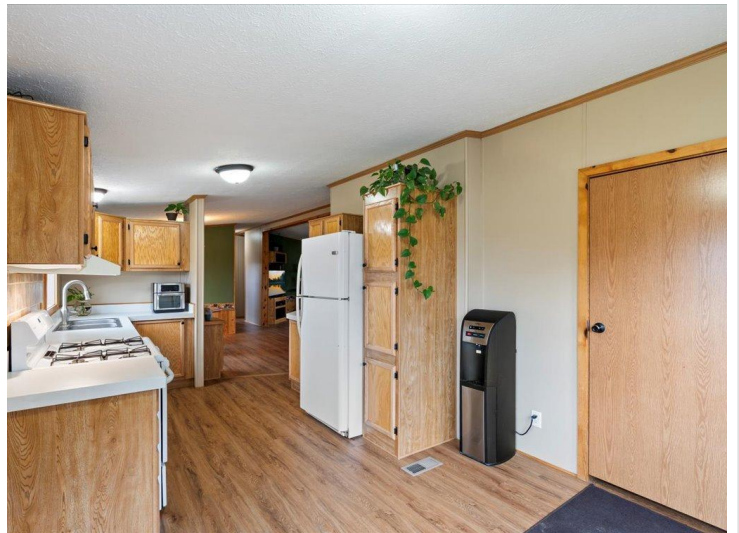
Affinity Real Estate - 600 Park Avenue South - Park Rapids MN 56470



website: www.AffinityRealEstate.com | email: info@affinityrealestate.com | office: 218-237-3333 | fax: 218-237-3377

Affinity
REAL ESTATE INC

\$270,000
MLS 7011823 Residential
4209 State 210
Pillager MN 56473



website: www.AffinityRealEstate.com | email: info@affinityrealestate.com | office: 218-237-3333 | fax:218-237-3377



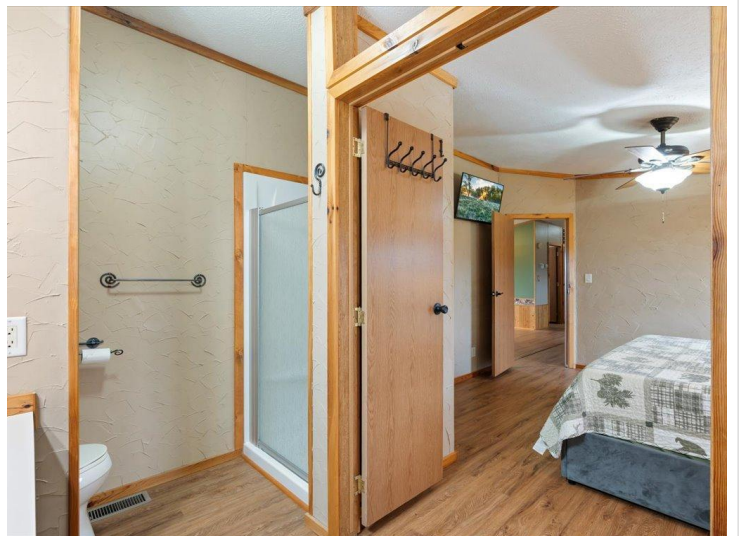
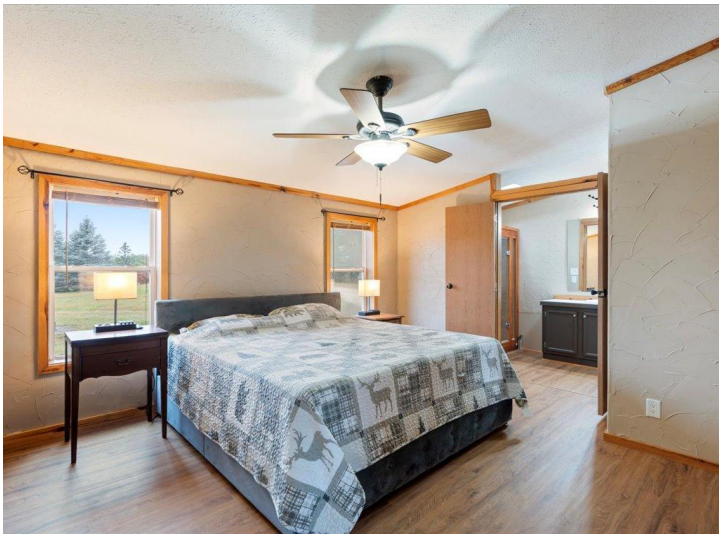
\$270,000
MLS 701823 Residential
4209 State 210
Pillager MN 56473



website: www.AffinityRealEstate.com | email: info@affinityrealestate.com | office: 218-237-3333 | fax:218-237-3377

Affinity
REAL ESTATE INC

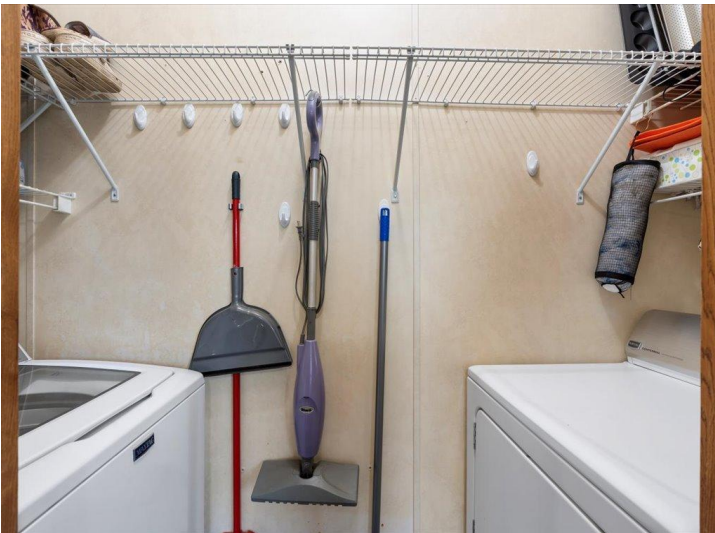
\$270,000
MLS 7011823 Residential
4209 State 210
Pillager MN 56473



website: www.AffinityRealEstate.com | email: info@affinityrealestate.com | office: 218-237-3333 | fax:218-237-3377



\$270,000
MLS 7011823 Residential
4209 State 210
Pillager MN 56473



website: www.AffinityRealEstate.com | email: info@affinityrealestate.com | office: 218-237-3333 | fax:218-237-3377

Affinity
REAL ESTATE INC

\$270,000
MLS 7011823 Residential
4209 State 210
Pillager MN 56473



website: www.AffinityRealEstate.com | email: info@affinityrealestate.com | office: 218-237-3333 | fax:218-237-3377



\$270,000
MLS 701823 Residential
4209 State 210
Pillager MN 56473



website: www.AffinityRealEstate.com | email: info@affinityrealestate.com | office: 218-237-3333 | fax:218-237-3377



\$270,000
MLS 701823 Residential
4209 State 210
Pillager MN 56473



website: www.AffinityRealEstate.com | email: info@affinityrealestate.com | office: 218-237-3333 | fax:218-237-3377



\$270,000
MLS 701823 Residential
4209 State 210
Pillager MN 56473