



MLS 7011947 Commercial

**\$0**

14410 Golf Course Drive  
Baxter MN 56425

Status: Active

**Description:**

Position your business for success in this well-appointed, turn-key office suite featuring three private offices, a spacious conference room, an open and welcoming reception area, and a convenient rear storage space. Ideally located in the heart of Baxter's thriving business community along the Golf Course Drive corridor, this space offers excellent visibility, easy access, and strong daily traffic counts. Benefit from the energy and synergy of nearby national retailers including Target, Michaels, Aldi, Fleet Farm, and Kohl's. Whether you're relocating or expanding, this is an exceptional opportunity to establish your retail or office-service business in the heart of the Lakes Area.

**Additional Details:**

Year Built	2001
Lot Acres	1.47
Lot Dimensions	593.69' x 160.05' x 191.60' x 21.20' x 355.19'
School District	896
Taxes	\$18,552
Taxes with Assessments	\$18,552
Tax Year	2025

**Additional Features:**

**Fuel:** Array **Heat:** Forced Air

**Driving Directions:**

From Hwy 210/371 intersection in Baxter - North on Hwy 371 - East on Clearwater Road - South on Golf Course Drive approx. 300' to the property on the East



Listed By:  
Close-Converse Commercial Prop

Affinity Real Estate Inc. participates in the Regional Multiple Listing Service of Minnesota, Inc Broker Reciprocity (sm) program, allowing us to display other broker's listings on our website. All properties are subject to prior sale, change or withdrawal.



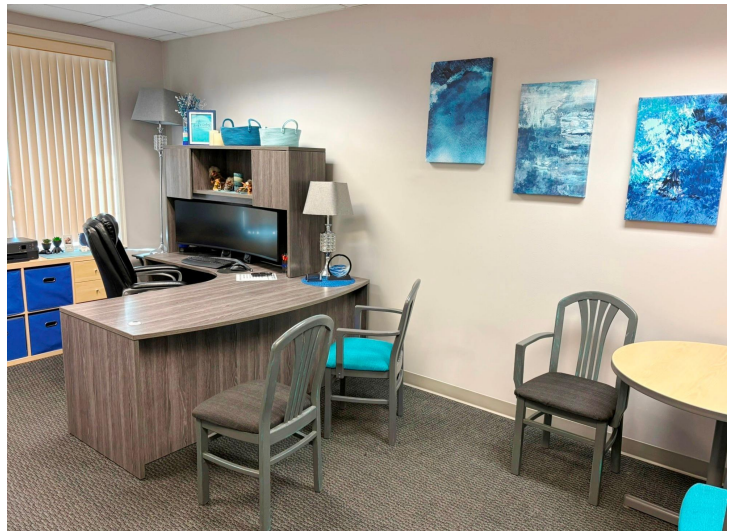
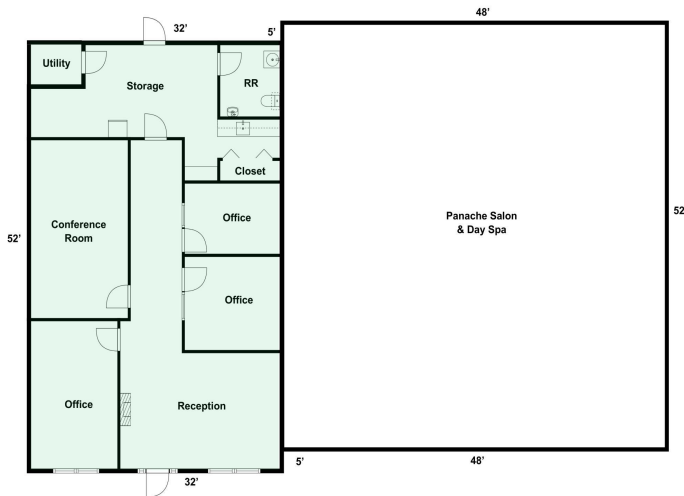
**Call Affinity Real Estate**

**218-237-3333**

**info@affinityrealestate.com**



**Affinity Real Estate - 600 Park Avenue South - Park Rapids MN 56470**



website: [www.AffinityRealEstate.com](http://www.AffinityRealEstate.com) | email: [info@affinityrealestate.com](mailto:info@affinityrealestate.com) | office: 218-237-3333 | fax: 218-237-3377



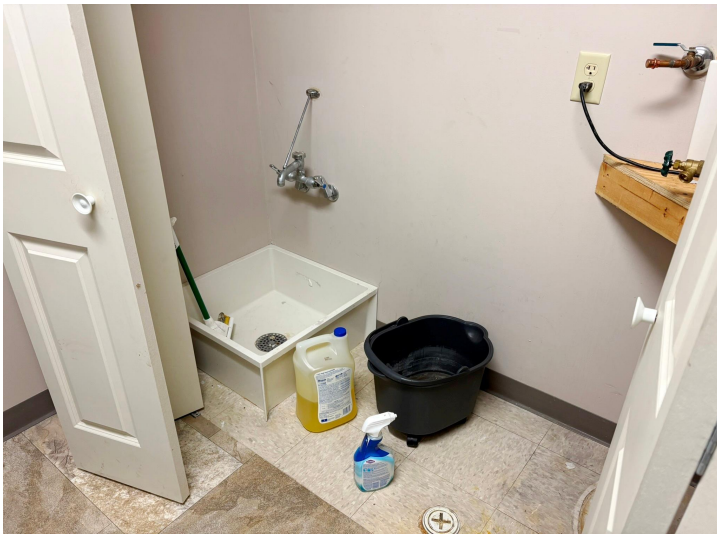
**\$0**  
 MLS 7011947 Commercial  
 14410 Golf Course Drive  
 Baxter MN 56425



website: [www.AffinityRealEstate.com](http://www.AffinityRealEstate.com) | email: [info@affinityrealestate.com](mailto:info@affinityrealestate.com) | office: 218-237-3333 | fax: 218-237-3377

**Affinity**  
REAL ESTATE INC

**\$0**  
MLS 7011947 Commercial  
14410 Golf Course Drive  
Baxter MN 56425



website: [www.AffinityRealEstate.com](http://www.AffinityRealEstate.com) | email: [info@affinityrealestate.com](mailto:info@affinityrealestate.com) | office: 218-237-3333 | fax: 218-237-3377

**Affinity**  
REAL ESTATE INC

**\$0**  
MLS 7011947 Commercial  
14410 Golf Course Drive  
Baxter MN 56425