



MLS 7012082 Residential

\$53,800

940 sq ft
2 bedrooms
1 baths

251 County Road 3
Osakis MN 56360

Status: Active

Description:

Situated on approximately 4.57 acres just north of Osakis, this property offers a desirable rural setting with open space and light tree coverage, providing privacy and flexibility for a variety of uses. The standout feature is the large detached garage with approximately 1,800 square feet, offering ample room for vehicle storage, equipment, hobbies, or workshop needs. The home features a functional layout with main-level living space and an upper-level bedroom, along with a deck overlooking the surrounding acreage. A well-maintained county road provides year-round access while maintaining a quiet country feel, making this property well suited for buyers seeking land, storage capacity, and a rural lifestyle within convenient driving distance of town.

Additional Details:

| | |
|------------------------|------------|
| Year Built | 1898 |
| Lot Acres | 4.57 |
| Lot Dimensions | 4.57 acres |
| Garage Stalls | 7 |
| School District | 1040 |
| Taxes | \$1,778 |
| Taxes with Assessments | \$1,778 |
| Tax Year | 2025 |

Additional Features:

Basement: Block **Fuel:** Array **Garage:** 7 **Heat:** Forced Air **Sewer:** Tank with Drainage Field **Water:** Well **Air Conditioning:** None

Driving Directions:

From Osakis, north on County Rd 3 for 1.9 miles to property on left



Listed By:
Gallery of Homes

Affinity Real Estate Inc. participates in the Regional Multiple Listing Service of Minnesota, Inc Broker Reciprocity (sm) program, allowing us to display other broker's listings on our website. All properties are subject to prior sale, change or withdrawal.



Call Affinity Real Estate

218-237-3333

info@affinityrealestate.com



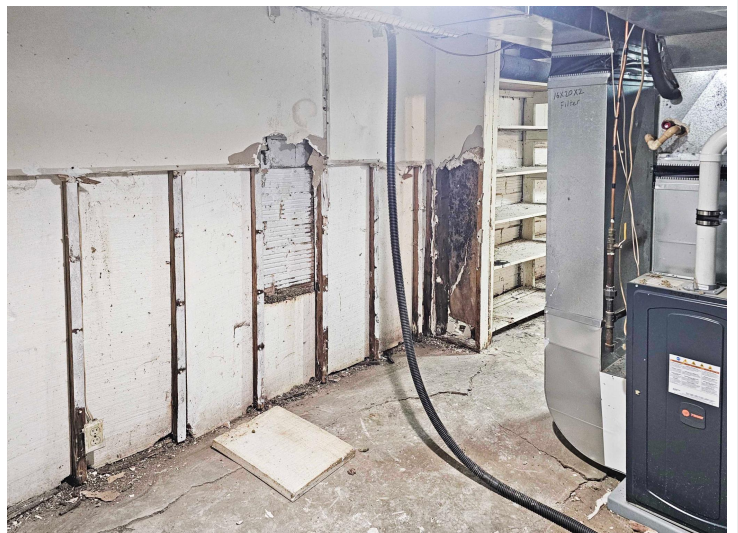
Affinity Real Estate - 600 Park Avenue South - Park Rapids MN 56470



website: www.AffinityRealEstate.com | email: info@affinityrealestate.com | office: 218-237-3333 | fax: 218-237-3377

Affinity
REAL ESTATE INC

\$53,800
MLS 7012082 Residential
251 County Road 3
Osakis MN 56360



website: www.AffinityRealEstate.com | email: info@affinityrealestate.com | office: 218-237-3333 | fax: 218-237-3377

Affinity
REAL ESTATE INC

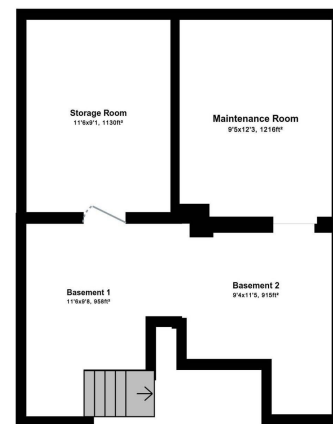
\$53,800
MLS 7012082 Residential
251 County Road 3
Osakis MN 56360



website: www.AffinityRealEstate.com | email: info@affinityrealestate.com | office: 218-237-3333 | fax: 218-237-3377

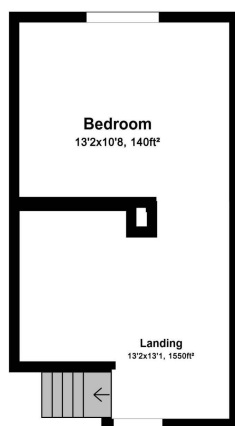
Affinity
REAL ESTATE INC

\$53,800
MLS 7012082 Residential
251 County Road 3
Osakis MN 56360



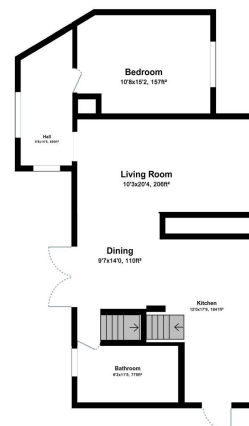
For illustration purposes only. Not to scale.

Lower Floor



For illustration purposes only. Not to scale.

Upper Floor



For illustration purposes only. Not to scale.

Main Floor

website: www.AffinityRealEstate.com | email: info@affinityrealestate.com | office: 218-237-3333 | fax: 218-237-3377



\$53,800
MLS 7012082 Residential
251 County Road 3
Osakis MN 56360