

MLS 7012250 Land

**\$67,500**

2.83 Acres  
Finished Lot(s)

TBD X26 My Abbys Way Lane  
Pequot Lakes MN 56472

Status: Active

#### Description:

New residential neighborhood in the heart of the Nisswa and Pequot Lakes area. Nicely wooded 2.25+ acre lots are designed to offer peace and privacy in a rural setting and a great location for your new home. New streets are now paved and ditches hydroseeded, quiet streets without through traffic. Drive through anytime! Crow Wing Power and TDS fiber optics are available at street. Parcels other then those in MLS may be available at this time. Close to Gull Lake, Pillsbury State forest, Pelican lake, championship golf and all the lakes area has to offer. See covenants and plat in supplements.

#### Additional Details:

Lot Acres	2.83
Lot Dimensions	187x148x481x210x596
School District	909
Taxes	\$58
Taxes with Assessments	\$58
Tax Year	2025

#### Additional Features:

#### Driving Directions:

From Nisswa, North on Hwy 371 to Left on Co Rd 29 (Wilderness Rd) to Right on Co Rd 78 (17th Ave) to Right on 72nd St SW, to Left on Abby's Lane SW to Left on Smiley Way .



Listed By:  
Kurilla Real Estate LTD

Affinity Real Estate Inc. participates in the Regional Multiple Listing Service of Minnesota, Inc Broker Reciprocity (sm) program, allowing us to display other broker's listings on our website. All properties are subject to prior sale, change or withdrawal.



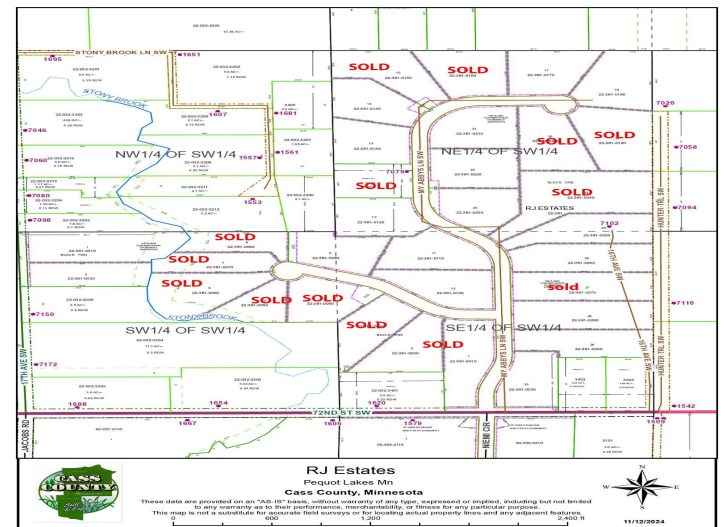
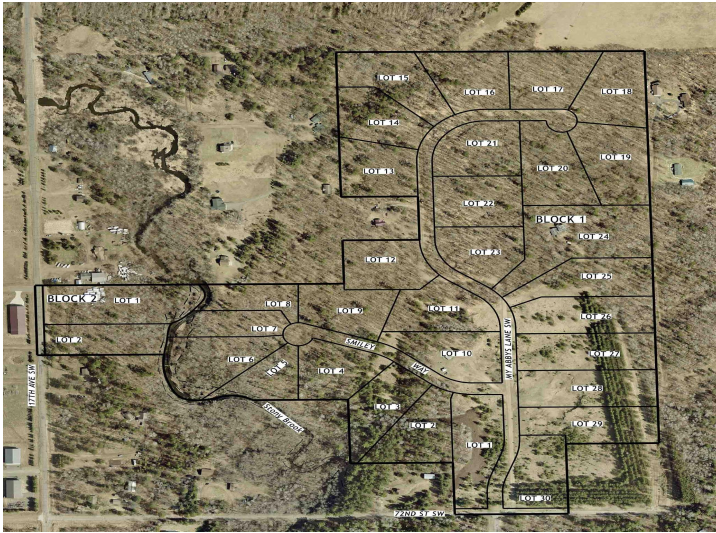
Call Affinity Real Estate

**218-237-3333**

[info@affinityrealestate.com](mailto:info@affinityrealestate.com)



Affinity Real Estate - 600 Park Avenue South - Park Rapids MN 56470



website: [www.AffinityRealEstate.com](http://www.AffinityRealEstate.com) | email: [info@affinityrealestate.com](mailto:info@affinityrealestate.com) | office: 218-237-3333 | fax: 218-237-3377

**Affinity**  
REAL ESTATE INC

**\$67,500**  
MLS 7012250 Land  
TBD X26 My Abbys Way  
Lane  
Pequot Lakes MN 56472

website: [www.AffinityRealEstate.com](http://www.AffinityRealEstate.com) | email: [info@affinityrealestate.com](mailto:info@affinityrealestate.com) | office: 218-237-3333 | fax:218-237-3377



**\$67,500**

MLS 7012250 Land  
TBD X26 My Abbys Way  
Lane  
Pequot Lakes MN 56472