



MLS 7012340 Lake Home

\$345,678

908 sq ft
2 bedrooms
1 baths

39817 Osage Drive
Browerville MN 56438

Waterfront: Little Pine Lake
(77013400)

Status: Active

Description:

Ultimate comfort & privacy is yours in this 908 square foot, lofted 2 bedroom, 1 bathroom lake home on Little Pine Lake. Offering three lots on Little Pine for a total of 1.4 acres with 310 feet of shoreline. Features include: An open floor plan concept with vaulted ceilings, spectacular lake views from both levels. Main floor living room, dining area, kitchen, primary bedroom and bathroom. 16'x21' Loft is used as a second bedroom. 10'x25' three season porch. Full unfinished walkout basement. Located approximately 2 hours from Metro area or 30 minutes from the Brainerd/Baxter area. As homeowner in Sylvan Shores Association you have access to all amenities including: Use of clubhouse for family gatherings & parties, etc. swimming pool, tennis courts, basketball court, and access to three private lakes.

Additional Details:

Year Built	1980
Lot Acres	1.4
Lot Dimensions	310x182x349x170
School District	2170
Taxes	\$1,270
Taxes with Assessments	\$1,270
Tax Year	2025

Additional Features:

Fuel: Electric **Heat:** Baseboard, Dual Fuel/Off Peak

Driving Directions:

From stoplight on US Hwy 10 in Staples turn south, cross RR tracks & continue approx. 1.5 miles to left turn on County Rd. 21 to left turn County 26, to right turn on 285th Ave to right turn on Osage Dr.



Listed By:
Edina Realty, Inc.

Affinity Real Estate Inc. participates in the Regional Multiple Listing Service of Minnesota, Inc Broker Reciprocity (sm) program, allowing us to display other broker's listings on our website. All properties are subject to prior sale, change or withdrawal.



Call Affinity Real Estate

218-237-3333

info@affinityrealestate.com



Affinity Real Estate - 600 Park Avenue South - Park Rapids MN 56470



website: www.AffinityRealEstate.com | email: info@affinityrealestate.com | office: 218-237-3333 | fax: 218-237-3377

Affinity
REAL ESTATE INC

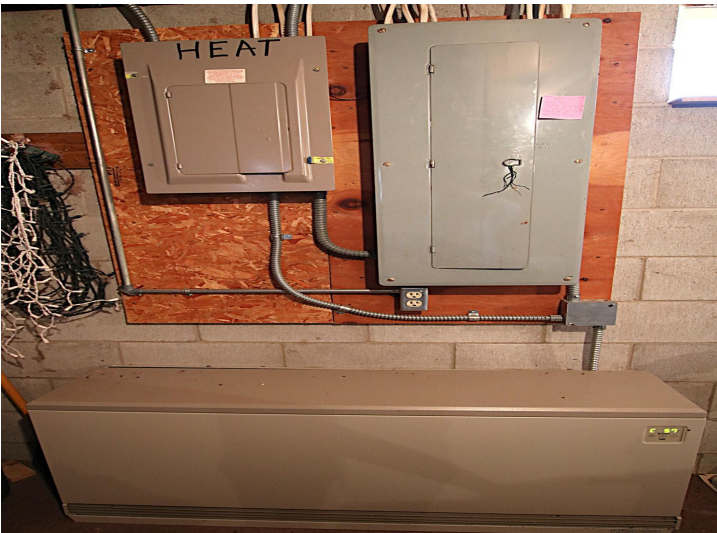
\$345,678
MLS 7012340 Lake Home
39817 Osage Drive
Browerville MN 56438



website: www.AffinityRealEstate.com | email: info@affinityrealestate.com | office: 218-237-3333 | fax:218-237-3377

Affinity
REAL ESTATE INC

\$345,678
MLS 7012340 Lake Home
39817 Osage Drive
Browerville MN 56438



website: www.AffinityRealEstate.com | email: info@affinityrealestate.com | office: 218-237-3333 | fax:218-237-3377

Affinity
REAL ESTATE INC

\$345,678
MLS 7012340 Lake Home
39817 Osage Drive
Browerville MN 56438



website: www.AffinityRealEstate.com | email: info@affinityrealestate.com | office: 218-237-3333 | fax:218-237-3377



\$345,678
MLS 7012340 Lake Home
39817 Osage Drive
Browerville MN 56438



website: www.AffinityRealEstate.com | email: info@affinityrealestate.com | office: 218-237-3333 | fax:218-237-3377



\$345,678
MLS 7012340 Lake Home
39817 Osage Drive
Browerville MN 56438