

MLS 7012432 Land

\$145,000

2.399 Acres
Plat Designed

TBD1 Winter Creek Court
Nisswa MN 56468

Status: Active

Description:

Discover the perfect blend of natural beauty and modern convenience with these nicely wooded lots located just minutes from the Gull Lake recreation area and the slopes of Ski Gull. Enjoy direct access to a paved golf cart and bike trail, and take advantage of the area's exceptional fine dining and championship golf courses. This highly sought-after location offers the rare opportunity to build your dream home adjacent to the scenic Pillsbury State Forest, ensuring added privacy and a front-row seat to abundant wildlife. Whether you're into fishing, skiing, biking, or simply enjoying the outdoors, this property places you at the heart of it all. Lots can be built to suit with floor plans shown, or bring your own designs. Don't miss your chance to secure a slice of Minnesota's most desirable lake and recreation area!

Additional Details:

Lot Acres	2.399
Lot Dimensions	510x266x467x275
School District	726
Taxes	\$98
Taxes with Assessments	\$98
Tax Year	2025

Additional Features:

Driving Directions:

From Brainerd - North on Hwy 371 - Left on Pine Beach Rd - Follow to property on the left



Listed By:
NextHome Horizons

Affinity Real Estate Inc. participates in the Regional Multiple Listing Service of Minnesota, Inc Broker Reciprocity (sm) program, allowing us to display other broker's listings on our website. All properties are subject to prior sale, change or withdrawal.



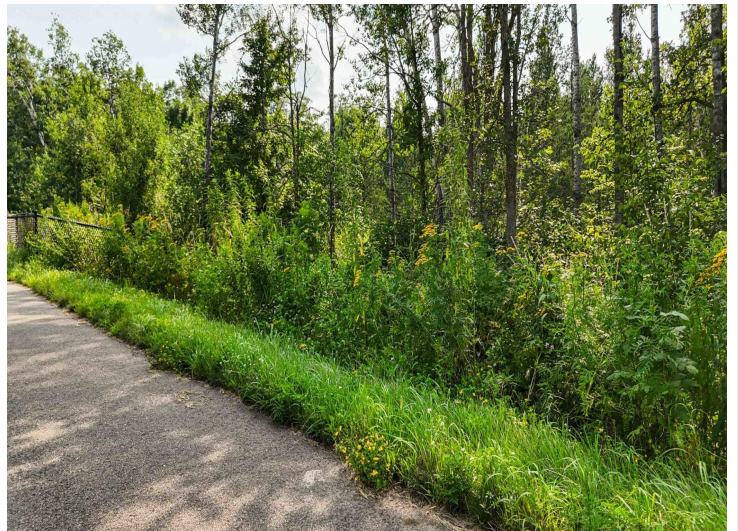
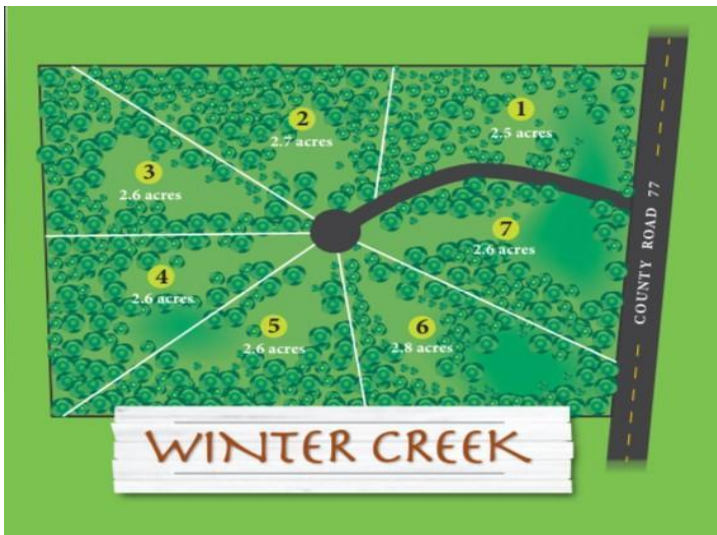
Call Affinity Real Estate

218-237-3333

info@affinityrealestate.com



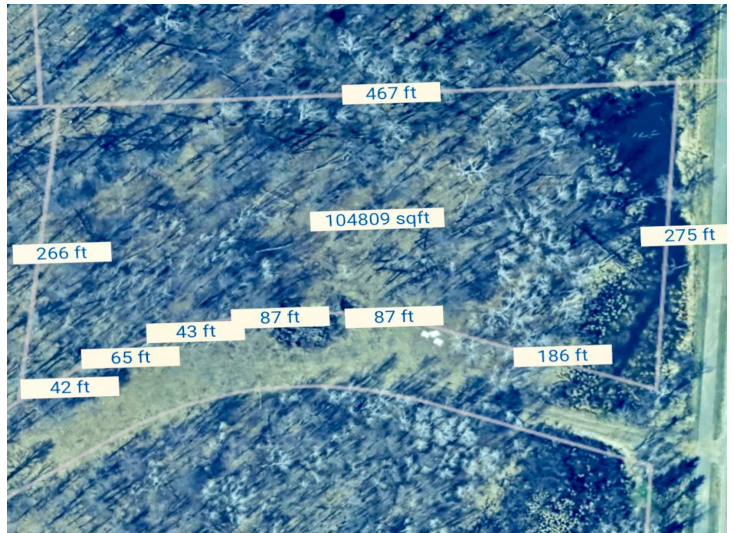
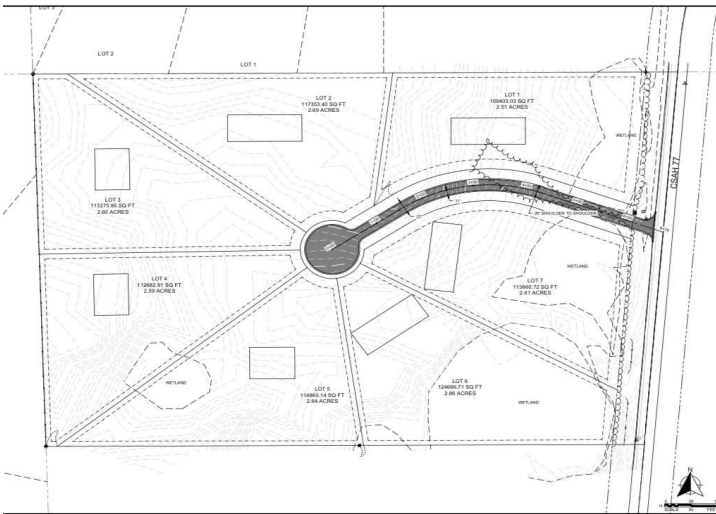
Affinity Real Estate - 600 Park Avenue South - Park Rapids MN 56470



website: www.AffinityRealEstate.com | email: info@affinityrealestate.com | office: 218-237-3333 | fax: 218-237-3377

Affinity
REAL ESTATE INC

\$145,000
MLS 7012432 Land
TBD1 Winter Creek Court
Nisswa MN 56468



CRAFTSMAN 2,852 SF



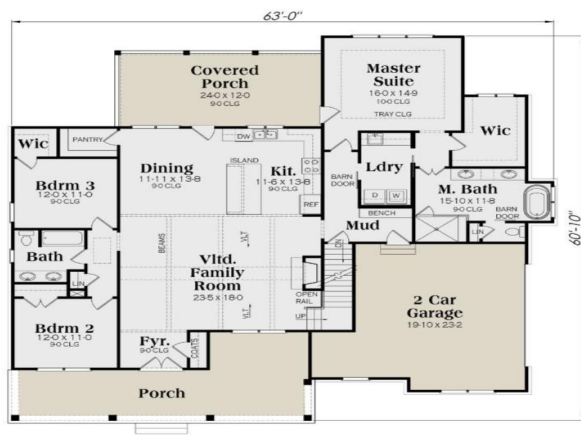
FARMHOUSE 2,578 SF



website: www.AffinityRealEstate.com | email: info@affinityrealestate.com | office: 218-237-3333 | fax: 218-237-3377

Affinity
REAL ESTATE INC

\$145,000
MLS 7012432 Land
TBD1 Winter Creek Court
Nisswa MN 56468



website: www.AffinityRealEstate.com | email: info@affinityrealestate.com | office: 218-237-3333 | fax: 218-237-3377



\$145,000
 MLS 7012432 Land
 TBD1 Winter Creek Court
 Nisswa MN 56468



website: www.AffinityRealEstate.com | email: info@affinityrealestate.com | office: 218-237-3333 | fax: 218-237-3377



\$145,000
MLS 7012432 Land
TBD1 Winter Creek Court
Nisswa MN 56468



website: www.AffinityRealEstate.com | email: info@affinityrealestate.com | office: 218-237-3333 | fax: 218-237-3377



\$145,000
MLS 7012432 Land
TBD1 Winter Creek Court
Nisswa MN 56468



website: www.AffinityRealEstate.com | email: info@affinityrealestate.com | office: 218-237-3333 | fax:218-237-3377



\$145,000
MLS 7012432 Land
TBD1 Winter Creek Court
Nisswa MN 56468