



MLS 7012459 Residential

**\$190,000**

3,136 sq ft  
4 bedrooms  
3 baths

5304 Bemidji Avenue  
Bemidji MN 56601

Status: Active

**Description:**

Spacious split-entry residence situated on a heavily wooded approximate 0.78-acre lot in Bemidji. The home offers four bedrooms and three bathrooms with over 3,100 finished square feet across two levels. Main level includes a large living room, kitchen with adjacent dining area, sun room, and primary bedroom. Lower level features additional bedrooms, bathroom, family room, and utility space. Property includes multiple garage spaces consisting of attached and detached garages, with workshop space integrated into the detached garage. Exterior amenities include a deck and partial fencing. Located in a rural residential setting while remaining within proximity to Bemidji amenities.

**Additional Details:**

Year Built	1976
Lot Acres	0.78
Lot Dimensions	203' x 313'
Garage Stalls	3
School District	1386
Taxes	\$3,960
Taxes with Assessments	\$4,146
Tax Year	2025

**Additional Features:**

**Basement:** Partial, Wood **Fuel:** Array **Garage:** 3 **Heat:** Baseboard, Dual Fuel/Off Peak, Forced Air **Sewer:** Private Sewer **Water:** Private **Air Conditioning:** Central Air

**Driving Directions:**

5304 Bemidji Ave. No.



Listed By:  
Gallery of Homes

Affinity Real Estate Inc. participates in the Regional Multiple Listing Service of Minnesota, Inc Broker Reciprocity (sm) program, allowing us to display other broker's listings on our website. All properties are subject to prior sale, change or withdrawal.



**Call Affinity Real Estate**

**218-237-3333**

**info@affinityrealestate.com**



**Affinity Real Estate - 600 Park Avenue South - Park Rapids MN 56470**





website: [www.AffinityRealEstate.com](http://www.AffinityRealEstate.com) | email: [info@affinityrealestate.com](mailto:info@affinityrealestate.com) | office: 218-237-3333 | fax: 218-237-3377

**Affinity**  
REAL ESTATE INC

**\$190,000**  
MLS 7012459 Residential  
5304 Bemidji Avenue  
Bemidji MN 56601





website: [www.AffinityRealEstate.com](http://www.AffinityRealEstate.com) | email: [info@affinityrealestate.com](mailto:info@affinityrealestate.com) | office: 218-237-3333 | fax: 218-237-3377

**Affinity**  
REAL ESTATE INC

**\$190,000**  
MLS 7012459 Residential  
5304 Bemidji Avenue  
Bemidji MN 56601





website: [www.AffinityRealEstate.com](http://www.AffinityRealEstate.com) | email: [info@affinityrealestate.com](mailto:info@affinityrealestate.com) | office: 218-237-3333 | fax: 218-237-3377

**Affinity**  
REAL ESTATE INC

**\$190,000**  
MLS 7012459 Residential  
5304 Bemidji Avenue  
Bemidji MN 56601



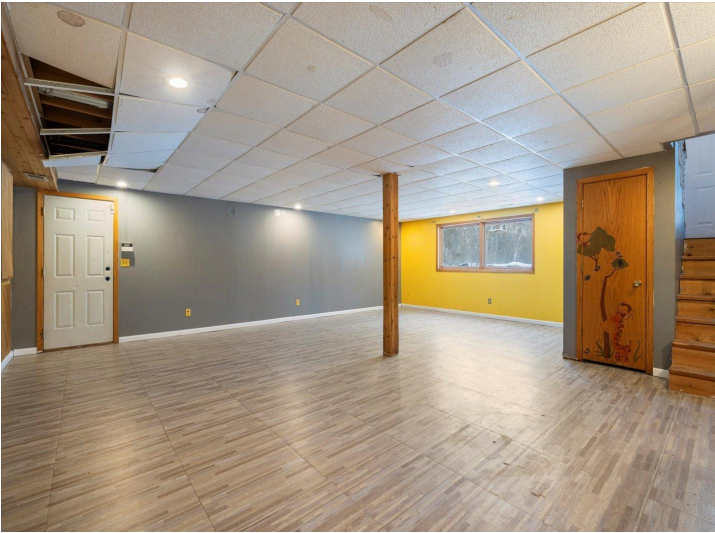


website: [www.AffinityRealEstate.com](http://www.AffinityRealEstate.com) | email: [info@affinityrealestate.com](mailto:info@affinityrealestate.com) | office: 218-237-3333 | fax: 218-237-3377

**Affinity**  
REAL ESTATE INC

**\$190,000**  
MLS 7012459 Residential  
5304 Bemidji Avenue  
Bemidji MN 56601



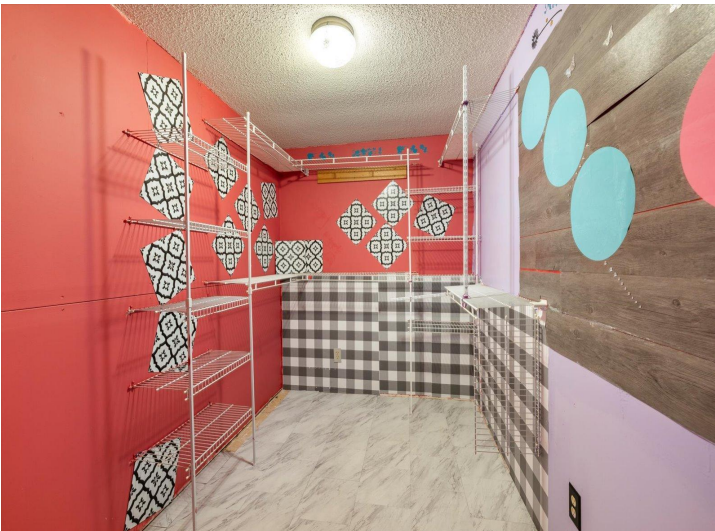
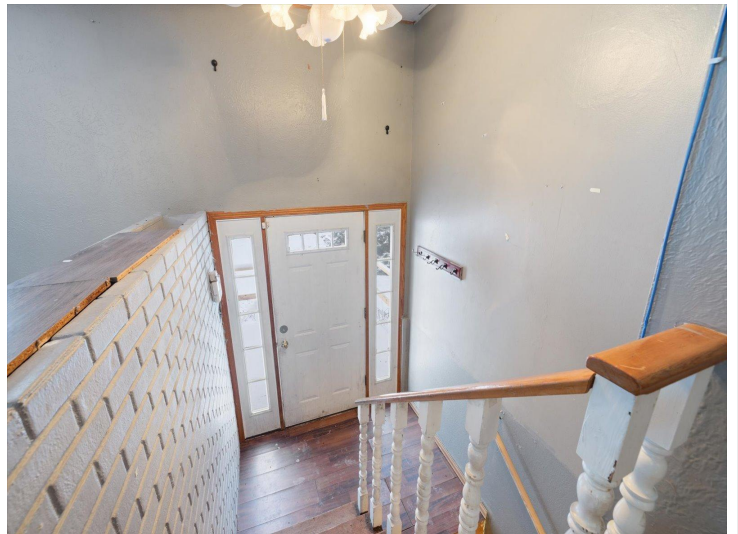


website: [www.AffinityRealEstate.com](http://www.AffinityRealEstate.com) | email: [info@affinityrealestate.com](mailto:info@affinityrealestate.com) | office: 218-237-3333 | fax: 218-237-3377



**\$190,000**  
 MLS 7012459 Residential  
 5304 Bemidji Avenue  
 Bemidji MN 56601





website: [www.AffinityRealEstate.com](http://www.AffinityRealEstate.com) | email: [info@affinityrealestate.com](mailto:info@affinityrealestate.com) | office: 218-237-3333 | fax: 218-237-3377



**\$190,000**  
 MLS 7012459 Residential  
 5304 Bemidji Avenue  
 Bemidji MN 56601





website: [www.AffinityRealEstate.com](http://www.AffinityRealEstate.com) | email: [info@affinityrealestate.com](mailto:info@affinityrealestate.com) | office: 218-237-3333 | fax: 218-237-3377



**\$190,000**  
 MLS 7012459 Residential  
 5304 Bemidji Avenue  
 Bemidji MN 56601



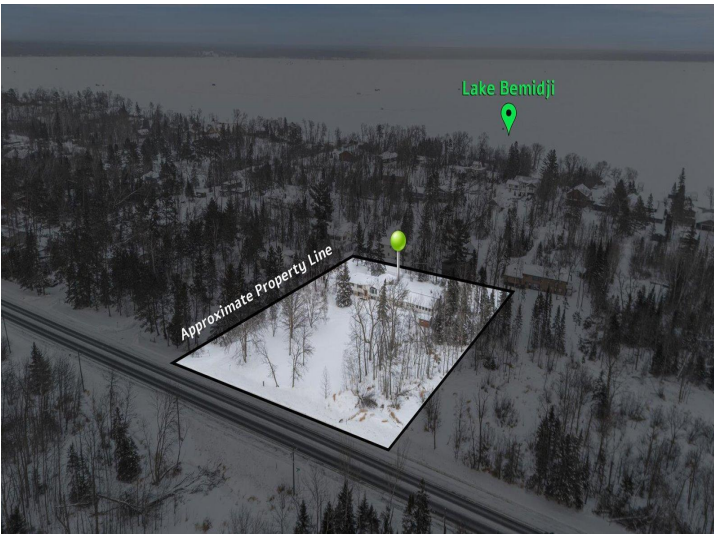


website: [www.AffinityRealEstate.com](http://www.AffinityRealEstate.com) | email: [info@affinityrealestate.com](mailto:info@affinityrealestate.com) | office: 218-237-3333 | fax: 218-237-3377

**Affinity**  
REAL ESTATE INC

**\$190,000**  
MLS 7012459 Residential  
5304 Bemidji Avenue  
Bemidji MN 56601





website: [www.AffinityRealEstate.com](http://www.AffinityRealEstate.com) | email: [info@affinityrealestate.com](mailto:info@affinityrealestate.com) | office: 218-237-3333 | fax: 218-237-3377

**Affinity**  
REAL ESTATE INC

**\$190,000**  
MLS 7012459 Residential  
5304 Bemidji Avenue  
Bemidji MN 56601





website: [www.AffinityRealEstate.com](http://www.AffinityRealEstate.com) | email: [info@affinityrealestate.com](mailto:info@affinityrealestate.com) | office: 218-237-3333 | fax: 218-237-3377



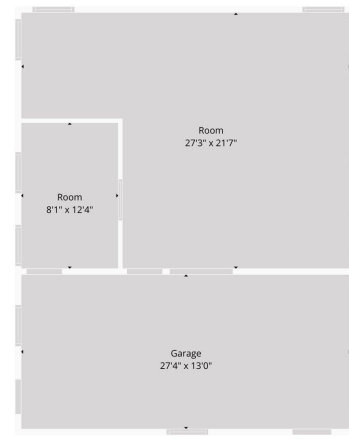
**\$190,000**  
 MLS 7012459 Residential  
 5304 Bemidji Avenue  
 Bemidji MN 56601





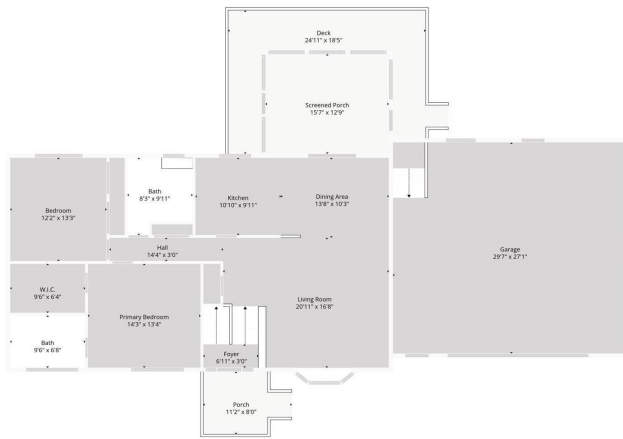
**TOTAL: 2381 sq. ft.**  
 Basement 1: 1090 sq. ft., 1st floor: 1291 sq. ft.  
 EXCLUDED AREAS: UTILITY: 146 sq. ft., GARAGE: 800 sq. ft., SCREENED PORCH: 199 sq. ft.,  
 PORCH: 75 sq. ft., DECK: 239 sq. ft., BAY WINDOW: 11 sq. ft.,  
 WALLS: 212 sq. ft.

Floor Plan Created By Calixtus App. Measurements Derived Using Lightbox But Not Guaranteed.



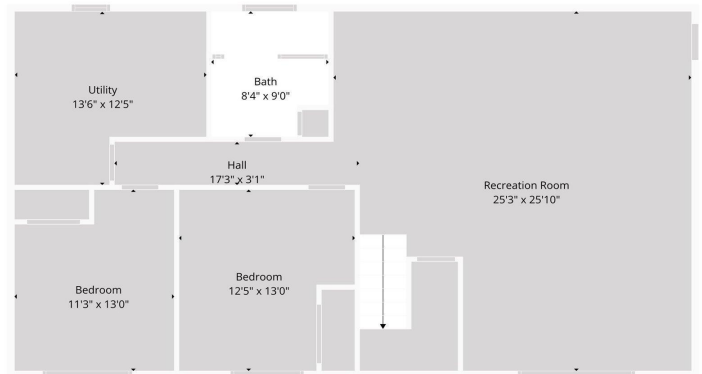
**TOTAL: 106 sq. ft.**  
 1st floor: 106 sq. ft.  
 EXCLUDED AREAS: GARAGE: 356 sq. ft., ROOM: 484 sq. ft., WALLS: 78 sq. ft.

Floor Plan Created By Calixtus App. Measurements Derived Using Lightbox But Not Guaranteed.



**TOTAL: 2381 sq. ft.**  
 Basement 1: 1090 sq. ft., 1st floor: 1291 sq. ft.  
 EXCLUDED AREAS: UTILITY: 146 sq. ft., GARAGE: 800 sq. ft., SCREENED PORCH: 199 sq. ft.,  
 PORCH: 75 sq. ft., DECK: 239 sq. ft., BAY WINDOW: 11 sq. ft.,  
 WALLS: 212 sq. ft.

Floor Plan Created By Calixtus App. Measurements Derived Using Lightbox But Not Guaranteed.



**TOTAL: 2381 sq. ft.**  
 Basement 1: 1090 sq. ft., 1st floor: 1291 sq. ft.  
 EXCLUDED AREAS: UTILITY: 146 sq. ft., GARAGE: 800 sq. ft., SCREENED PORCH: 199 sq. ft.,  
 PORCH: 75 sq. ft., DECK: 239 sq. ft., BAY WINDOW: 11 sq. ft.,  
 WALLS: 212 sq. ft.

Floor Plan Created By Calixtus App. Measurements Derived Using Lightbox But Not Guaranteed.

website: [www.AffinityRealEstate.com](http://www.AffinityRealEstate.com) | email: [info@affinityrealestate.com](mailto:info@affinityrealestate.com) | office: 218-237-3333 | fax: 218-237-3377



**\$190,000**  
 MLS 7012459 Residential  
 5304 Bemidji Avenue  
 Bemidji MN 56601