

MLS 7012466 Land

\$89,900

1.43 Acres
Raw Land

TBD Oak Street
Brainerd MN 56401

Status: Active

Description:

This lot offers high visibility on the corner of 28th and Oak Street. Zoned R3 (High Density Residential) but could possibly be rezoned with the city's approval to Res. Office or Neighborhood Business. Beautifully treed lot, close to businesses with a buffer of trees, this lot offers many opportunities. Upon approval, put in an office or multi-family homes. Excellent opportunity at a great price!

Additional Details:

Lot Acres	1.43
Lot Dimensions	311x200x314x200
School District	896
Taxes	\$344
Taxes with Assessments	\$344
Tax Year	2025

Additional Features:

Driving Directions:

Heading South of South 6th St, go East on Oak St to the property on the corner of Oak St & 28th in Brainerd



Listed By:
LPT Realty, LLC.

Affinity Real Estate Inc. participates in the Regional Multiple Listing Service of Minnesota, Inc Broker Reciprocity (sm) program, allowing us to display other broker's listings on our website. All properties are subject to prior sale, change or withdrawal.



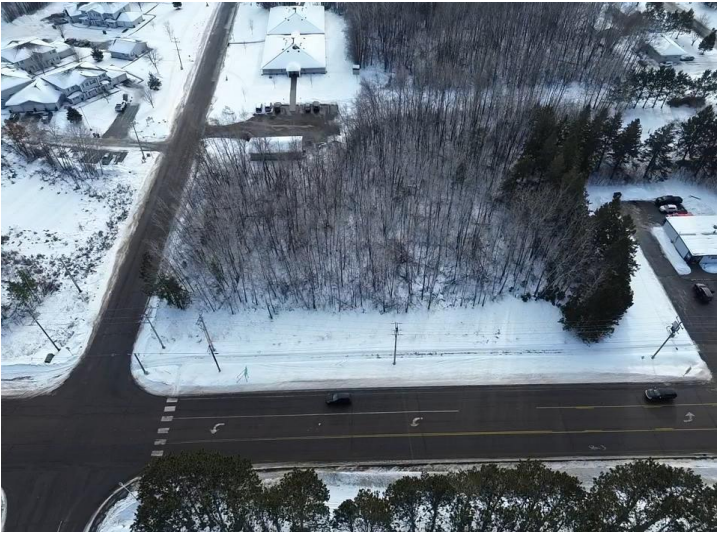
Call Affinity Real Estate

218-237-3333

info@affinityrealestate.com



Affinity Real Estate - 600 Park Avenue South - Park Rapids MN 56470



website: www.AffinityRealEstate.com | email: info@affinityrealestate.com | office: 218-237-3333 | fax:218-237-3377

Affinity
REAL ESTATE INC

\$89,900
MLS 7012466 Land
TBD Oak Street
Brainerd MN 56401



website: www.AffinityRealEstate.com | email: info@affinityrealestate.com | office: 218-237-3333 | fax:218-237-3377



\$89,900
MLS 7012466 Land
TBD Oak Street
Brainerd MN 56401