



MLS 7012539 Residential

\$150,000

1,915 sq ft
3 bedrooms
2 baths

121 Pine Crest Court
Bemidji MN 56601

Status: Active

Description:

One-level home with a finished lower level offering approximately 1,915 finished square feet, including three bedrooms and two bathrooms. The main floor features a living room, dining area, kitchen, three bedrooms, and a full bathroom. The lower level includes a family room, office area, additional bedroom space, bathroom, utility, and storage areas, with egress windows present. Features include natural gas forced-air heating, city water connection, private sewer system, asphalt shingle roof, wood exterior, and a detached two-stall garage with asphalt driveway. The property is situated on a residential lot with light tree coverage within the city of Bemidji.

Additional Details:

Year Built	1969
Lot Acres	0.3
Lot Dimensions	100*120
Garage Stalls	2
School District	1386
Taxes	\$2,496
Taxes with Assessments	\$2,682
Tax Year	2025

Additional Features:

Basement: Block, Egress Window(s), Finished, Full **Fuel:** Array **Garage:** 2 **Heat:** Forced Air **Sewer:** Private Sewer **Water:** City Water/Connected
Air Conditioning: None

Driving Directions:

From Bemidji Ave N, turn onto Pine Crest Ct NW. Property will be on your right.



Listed By:
Gallery of Homes

Affinity Real Estate Inc. participates in the Regional Multiple Listing Service of Minnesota, Inc Broker Reciprocity (sm) program, allowing us to display other broker's listings on our website. All properties are subject to prior sale, change or withdrawal.



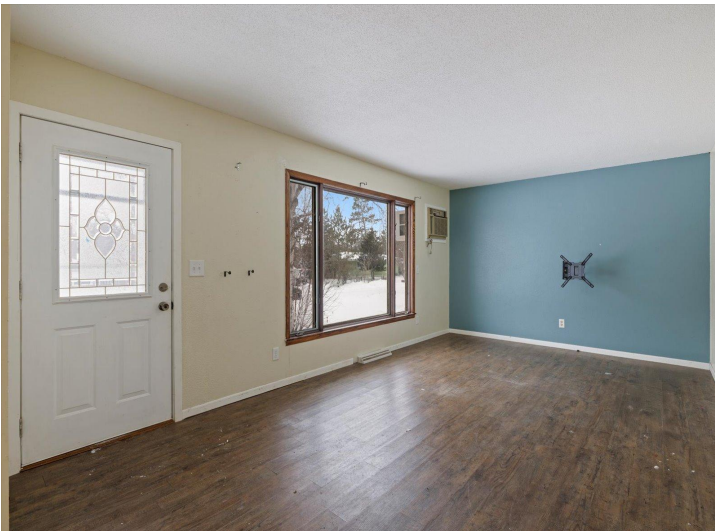
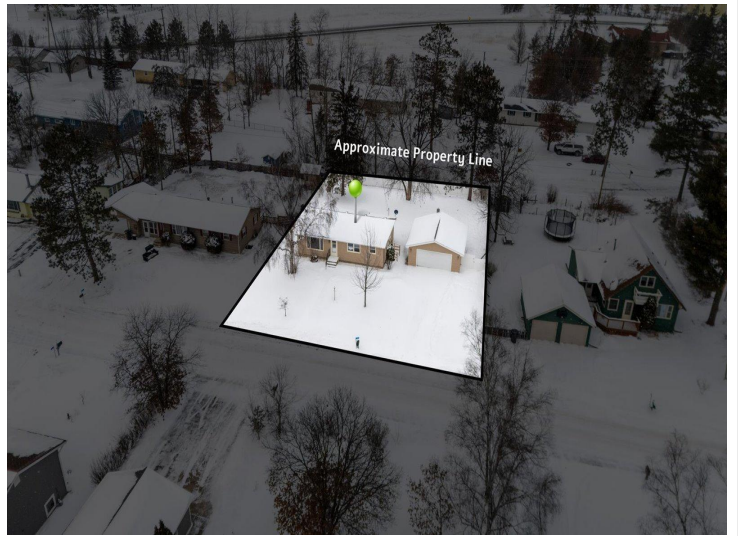
Call Affinity Real Estate

218-237-3333

info@affinityrealestate.com



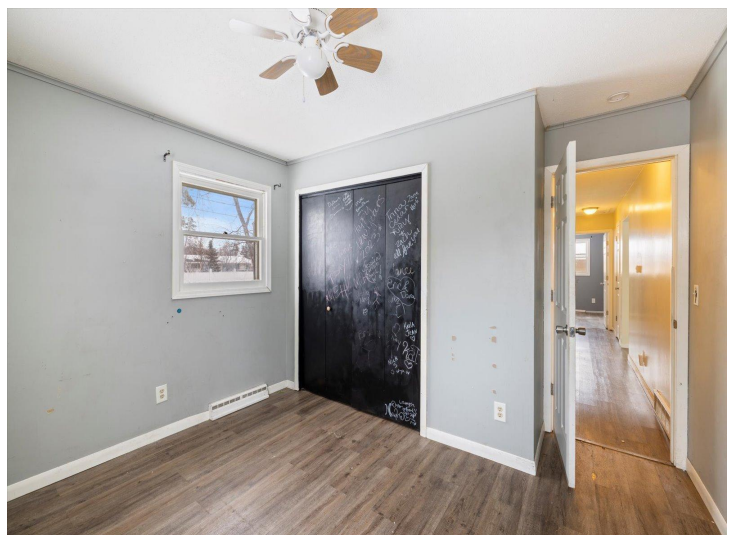
Affinity Real Estate - 600 Park Avenue South - Park Rapids MN 56470



website: www.AffinityRealEstate.com | email: info@affinityrealestate.com | office: 218-237-3333 | fax: 218-237-3377



\$150,000
 MLS 7012539 Residential
 121 Pine Crest Court
 Bemidji MN 56601



website: www.AffinityRealEstate.com | email: info@affinityrealestate.com | office: 218-237-3333 | fax: 218-237-3377



\$150,000
 MLS 7012539 Residential
 121 Pine Crest Court
 Bemidji MN 56601



website: www.AffinityRealEstate.com | email: info@affinityrealestate.com | office: 218-237-3333 | fax: 218-237-3377



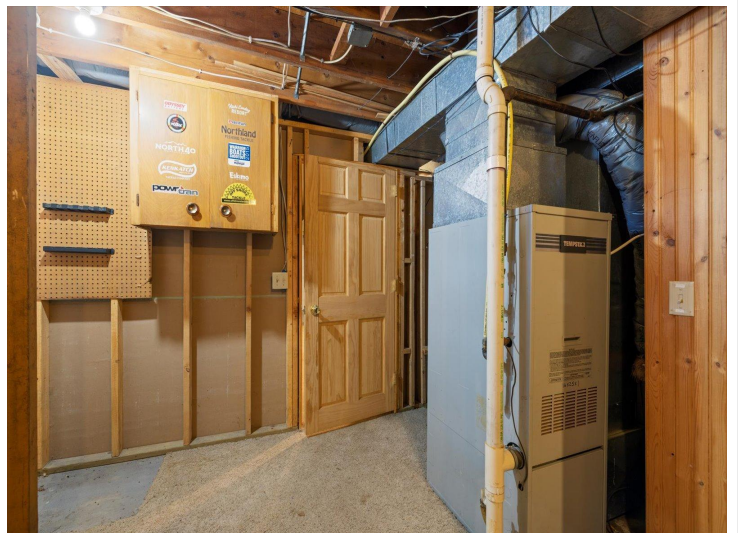
\$150,000
MLS 7012539 Residential
121 Pine Crest Court
Bemidji MN 56601



website: www.AffinityRealEstate.com | email: info@affinityrealestate.com | office: 218-237-3333 | fax: 218-237-3377

Affinity
REAL ESTATE INC

\$150,000
MLS 7012539 Residential
121 Pine Crest Court
Bemidji MN 56601



website: www.AffinityRealEstate.com | email: info@affinityrealestate.com | office: 218-237-3333 | fax: 218-237-3377



\$150,000
 MLS 7012539 Residential
 121 Pine Crest Court
 Bemidji MN 56601



website: www.AffinityRealEstate.com | email: info@affinityrealestate.com | office: 218-237-3333 | fax: 218-237-3377



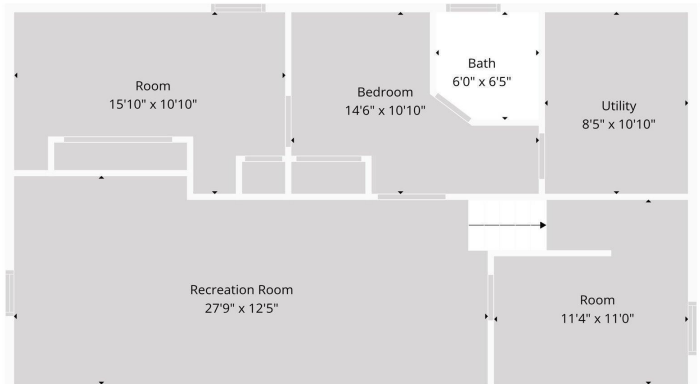
\$150,000
MLS 7012539 Residential
121 Pine Crest Court
Bemidji MN 56601



website: www.AffinityRealEstate.com | email: info@affinityrealestate.com | office: 218-237-3333 | fax:218-237-3377



\$150,000
 MLS 7012539 Residential
 121 Pine Crest Court
 Bemidji MN 56601

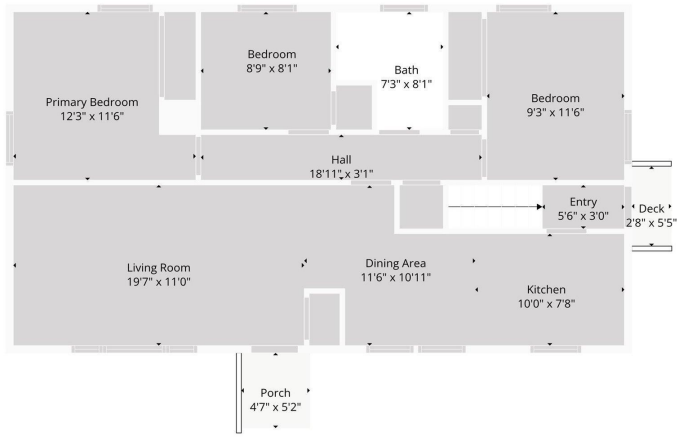


TOTAL: 1389 sq. ft.
 Basement: 1: 626 sq. ft., 1st Floor: 763 sq. ft.
 EXCLUDED AREAS: UTILITY: 91 sq. ft., ROOM: 145 sq. ft., UNDEFINED: 13 sq. ft.
 DINING AREA: 98 sq. ft., KITCHEN: 77 sq. ft., DECK: 14 sq. ft.
 PORCH: 24 sq. ft., WALLS: 127 sq. ft.
House Plans Provided by Customer Only. Measurements Provided Using Relative But Not Guaranteed.

website: www.AffinityRealEstate.com | email: info@affinityrealestate.com | office: 218-237-3333 | fax: 218-237-3377



\$150,000
 MLS 7012539 Residential
 121 Pine Crest Court
 Bemidji MN 56601



TOTAL: 1389 sq. ft.
 Basement: 1,626 sq. ft., 1st floor: 763 sq. ft.
 EXCLUDED AREAS: UTILITY: 91 sq. ft., ROOM: 145 sq. ft., UNDEFINED: 13 sq. ft.
 DINING AREA: 98 sq. ft., KITCHEN: 77 sq. ft., DECK: 14 sq. ft.
 PORCH: 24 sq. ft., WALLS: 127 sq. ft.

Floor Plan Created By CalcuSoft App. Measurements Determined By Realistic And Not Guaranteed.

website: www.AffinityRealEstate.com | email: info@affinityrealestate.com | office: 218-237-3333 | fax: 218-237-3377



\$150,000
 MLS 7012539 Residential
 121 Pine Crest Court
 Bemidji MN 56601