



MLS 7012880 Residential

\$369,900

2,104 sq ft
4 bedrooms
2 baths

620 Washington Avenue
Detroit Lakes MN 56501

Status: Active

Description:

STANDOUT PROPERTY WITH UPDATES, LOCATION AND FINANCING* THAT IS HARD TO BEAT! This beautifully updated 4-bedroom, 2-bath home is filled with natural light and has been thoughtfully updated from top to bottom. Upstairs you will find a remodeled kitchen with stainless steel appliances, tile backsplash, gas range, updated cabinets/counters, 2 bedrooms, great room and a beautifully updated bath. The lower level offers a superb renovated living space with an accent wall, 2 bedrooms, bathroom with walk in tile shower and a versatile office or gaming area. Other updates include updated flooring throughout nearly the entire home, updated solid doors and trim. Furnace and A/C both replaced in 2025! Step outside to a stamped concrete patio with hot tub hookups and a rare backyard setting overlooking approximately 40 acres of peaceful, green space—offering privacy, open views, and no backyard neighbors, and insulated garage with WiFi-enabled doors.

*RARE: ASSUMABLE VA LOAN @ 3.25% INTEREST AVAILABLE TO A QUALIFIED VETERAN.

Additional Details:

Year Built	2007
Lot Acres	0.23
Lot Dimensions	.23AC
Garage Stalls	2
School District	1074
Taxes	\$2,520
Taxes with Assessments	\$2,520
Tax Year	2025

Additional Features:

Basement: Daylight/Lookout Windows, Finished, Full, Tile Shower **Fuel:** Array **Garage:** 2 **Heat:** Forced Air **Sewer:** City Sewer/Connected
Water: City Water/Connected **Air Conditioning:** Central Air

Driving Directions:

North on Richwood Road; Left on Dean Street; Right on Washington. Watch for signs



Listed By:
HomeSmart Adventure Realty

Affinity Real Estate Inc. participates in the Regional Multiple Listing Service of Minnesota, Inc Broker Reciprocity (sm) program, allowing us to display other broker's listings on our website. All properties are subject to prior sale, change or withdrawal.



Call Affinity Real Estate

218-237-3333

info@affinityrealestate.com



Affinity Real Estate - 600 Park Avenue South - Park Rapids MN 56470



FLOOR PLAN CREATED BY CURIOUSAPP. MEASUREMENTS DEEMED HIGHLY RELIABLE BUT NOT GUARANTEED.



website: www.AffinityRealEstate.com | email: info@affinityrealestate.com | office: 218-237-3333 | fax: 218-237-3377

Affinity
REAL ESTATE INC

\$369,900
MLS 7012880 Residential
620 Washington Avenue
Detroit Lakes MN 56501



website: www.AffinityRealEstate.com | email: info@affinityrealestate.com | office: 218-237-3333 | fax: 218-237-3377



\$369,900
 MLS 7012880 Residential
 620 Washington Avenue
 Detroit Lakes MN 56501



website: www.AffinityRealEstate.com | email: info@affinityrealestate.com | office: 218-237-3333 | fax: 218-237-3377

Affinity
REAL ESTATE INC

\$369,900
MLS 7012880 Residential
620 Washington Avenue
Detroit Lakes MN 56501



website: www.AffinityRealEstate.com | email: info@affinityrealestate.com | office: 218-237-3333 | fax: 218-237-3377

Affinity
REAL ESTATE INC

\$369,900
MLS 7012880 Residential
620 Washington Avenue
Detroit Lakes MN 56501



website: www.AffinityRealEstate.com | email: info@affinityrealestate.com | office: 218-237-3333 | fax: 218-237-3377



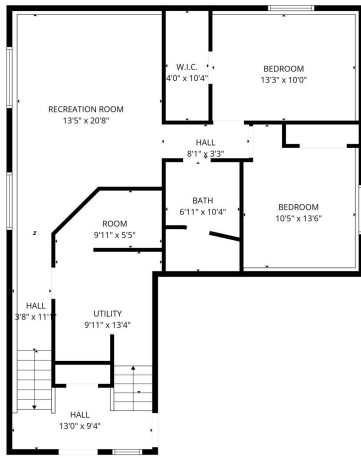
\$369,900
MLS 7012880 Residential
620 Washington Avenue
Detroit Lakes MN 56501



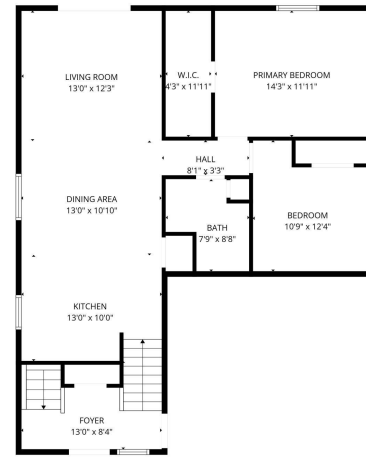
website: www.AffinityRealEstate.com | email: info@affinityrealestate.com | office: 218-237-3333 | fax: 218-237-3377

Affinity
REAL ESTATE INC

\$369,900
MLS 7012880 Residential
620 Washington Avenue
Detroit Lakes MN 56501



FLOOR PLAN CREATED BY CURBICASA APP. MEASUREMENTS DEEMED HIGHLY RELIABLE BUT NOT GUARANTEED.



FLOOR PLAN CREATED BY CURBICASA APP. MEASUREMENTS DEEMED HIGHLY RELIABLE BUT NOT GUARANTEED.

website: www.AffinityRealEstate.com | email: info@affinityrealestate.com | office: 218-237-3333 | fax: 218-237-3377



\$369,900
 MLS 7012880 Residential
 620 Washington Avenue
 Detroit Lakes MN 56501