



MLS 7013282 Land

**\$27,000**

0.318 Acres  
Raw Land

829 9th Avenue  
Perham MN 56573

Status: Active

**Description:**

Build your dream home in the heart of lakes country! This attractive lot in Perham, MN offers a great opportunity to enjoy small-town living with convenient access to schools, parks, shopping, and dining. Surrounded by beautiful scenery and just minutes from area lakes, this property provides the perfect blend of privacy and accessibility. Whether you're planning a year-round residence or a future investment, this lot is ready for your vision. Call agent for more information!

**Additional Details:**

Lot Acres	0.318
Lot Dimensions	150x92
School District	1955
Taxes	\$2,291
Taxes with Assessments	\$2,291
Tax Year	2025

**Additional Features:**

**Driving Directions:**

Take exit onto Otter Trail Scenic Byway and head East, head south on Coney St W, head East on 9th St SW



Listed By:  
Herd Realty LLP

Affinity Real Estate Inc. participates in the Regional Multiple Listing Service of Minnesota, Inc Broker Reciprocity (sm) program, allowing us to display other broker's listings on our website. All properties are subject to prior sale, change or withdrawal.



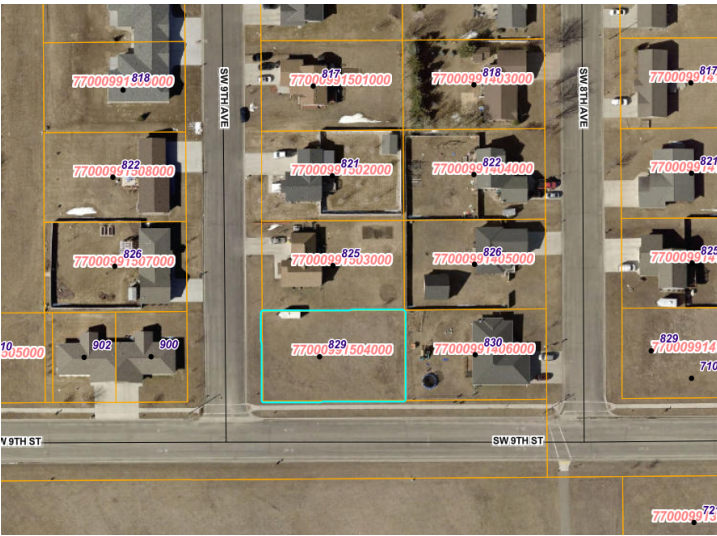
Call Affinity Real Estate

**218-237-3333**

[info@affinityrealestate.com](mailto:info@affinityrealestate.com)



Affinity Real Estate - 600 Park Avenue South - Park Rapids MN 56470



website: [www.AffinityRealEstate.com](http://www.AffinityRealEstate.com) | email: [info@affinityrealestate.com](mailto:info@affinityrealestate.com) | office: 218-237-3333 | fax:218-237-3377



**\$27,000**  
MLS 7013282 Land  
829 9th Avenue  
Perham MN 56573