



MLS 7014302 Commercial

\$0

13794 Bluestem Court
Baxter MN 56425

Status: Active

Description:

Excellent single-tenant office opportunity located in the Fairview Office Park along Hwy 210 in Baxter. This well-maintained office building is situated in a highly visible, high-traffic corridor within an area experiencing strong growth and ongoing economic development. The property is part of a professionally managed conservation office park featuring well-kept driveways, ample parking, and attractive landscaping. Easy access, strong surrounding demographics, and a polished professional setting with 13 plus offices make this an ideal location for a business seeking visibility, convenience, and a quality office environment.

Additional Details:

Year Built	2014
Lot Acres	0.12
Lot Dimensions	80x86
School District	896
Taxes	\$12,546
Taxes with Assessments	\$12,546
Tax Year	2025

Additional Features:

Fuel: Array **Heat:** Forced Air

Driving Directions:

From the Baxter Hwy 210/371 intersection, West on Hwy 210 - Right at the access to the Fairview Service Drive (near The Baymont Hotel) - West on Fairview Road to Fairview Office Park located on the right



Listed By:
Close-Converse Commercial Prop

Affinity Real Estate Inc. participates in the Regional Multiple Listing Service of Minnesota, Inc Broker Reciprocity (sm) program, allowing us to display other broker's listings on our website. All properties are subject to prior sale, change or withdrawal.



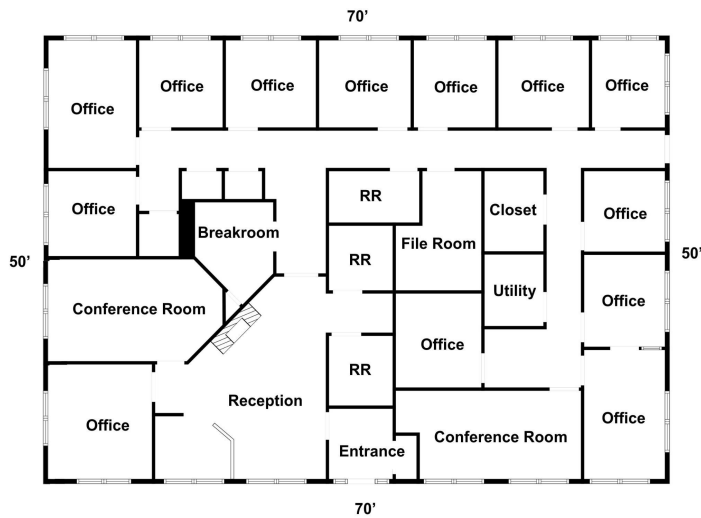
Call Affinity Real Estate

218-237-3333

info@affinityrealestate.com



Affinity Real Estate - 600 Park Avenue South - Park Rapids MN 56470



website: www.AffinityRealEstate.com | email: info@affinityrealestate.com | office: 218-237-3333 | fax: 218-237-3377



\$0
 MLS 7014302 Commercial
 13794 Bluestem Court
 Baxter MN 56425



website: www.AffinityRealEstate.com | email: info@affinityrealestate.com | office: 218-237-3333 | fax: 218-237-3377



\$0
 MLS 7014302 Commercial
 13794 Bluestem Court
 Baxter MN 56425



website: www.AffinityRealEstate.com | email: info@affinityrealestate.com | office: 218-237-3333 | fax: 218-237-3377



\$0
 MLS 7014302 Commercial
 13794 Bluestem Court
 Baxter MN 56425