



MLS 7014428 Residential

\$429,900

2,246 sq ft
4 bedrooms
2 baths

58988 County Highway 50
Deer Creek MN 56527

Status: Coming Soon

Description:

WOW, hobby farm/country living, arts and crafts, hunting, wildlife observing?? This one can do it all. Nestled on 25 country acres, this 4-bedroom home has an open kitchen-dining-living floor plan with main-floor laundry and 2 bedrooms up. The lower level has a huge "L"- shaped 27x11 & 14x13 family room, complete with a pellet-burning stove for those cold nights. Add 2 additional bedrooms with egress windows and a 3/4 bath, and this home affords lots of room for everyone. For the creative enthusiast, check out the 27x23&37x29 SHOP. The 27x23 is insulated; the rest could be too. Fully concreted floor and electric is in. For parking the huge 26x36 3-car garage with drive-through bay, electric, and fully concreted floor handles that. All are located in the country yet close enough to Wadena to afford quick trips to the store.

Additional Details:

Year Built	2004
Lot Acres	25
Lot Dimensions	825x1316
Garage Stalls	3
School District	1053
Taxes	\$1,420
Taxes with Assessments	\$1,420
Tax Year	2025

Additional Features:

Basement: Finished, Full **Fuel:** Array **Garage:** 3 **Heat:** Forced Air, Other **Sewer:** Private Sewer **Water:** Drilled, Private **Air Conditioning:** Wall Unit(s)

Driving Directions:

From County Road 75 West on County Road 50 to sign



Listed By:
Premier Realty Group

Affinity Real Estate Inc. participates in the Regional Multiple Listing Service of Minnesota, Inc Broker Reciprocity (sm) program, allowing us to display other broker's listings on our website. All properties are subject to prior sale, change or withdrawal.



Call Affinity Real Estate

218-237-3333

info@affinityrealestate.com



Affinity Real Estate - 600 Park Avenue South - Park Rapids MN 56470



website: www.AffinityRealEstate.com | email: info@affinityrealestate.com | office: 218-237-3333 | fax: 218-237-3377



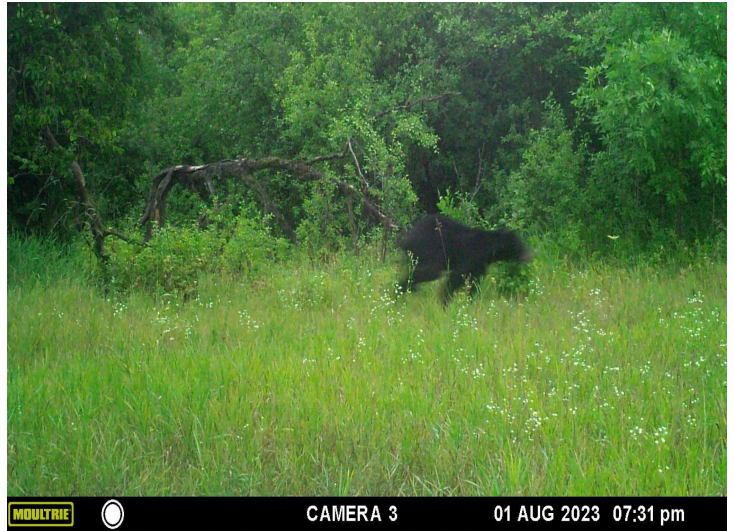
\$429,900
 MLS 7014428 Residential
 58988 County Highway 50
 Deer Creek MN 56527



website: www.AffinityRealEstate.com | email: info@affinityrealestate.com | office: 218-237-3333 | fax: 218-237-3377



\$429,900
 MLS 7014428 Residential
 58988 County Highway 50
 Deer Creek MN 56527



website: www.AffinityRealEstate.com | email: info@affinityrealestate.com | office: 218-237-3333 | fax: 218-237-3377



\$429,900
 MLS 7014428 Residential
 58988 County Highway 50
 Deer Creek MN 56527



website: www.AffinityRealEstate.com | email: info@affinityrealestate.com | office: 218-237-3333 | fax: 218-237-3377

Affinity
REAL ESTATE INC

\$429,900
MLS 7014428 Residential
58988 County Highway 50
Deer Creek MN 56527



website: www.AffinityRealEstate.com | email: info@affinityrealestate.com | office: 218-237-3333 | fax: 218-237-3377

Affinity
REAL ESTATE INC

\$429,900
MLS 7014428 Residential
58988 County Highway 50
Deer Creek MN 56527



website: www.AffinityRealEstate.com | email: info@affinityrealestate.com | office: 218-237-3333 | fax: 218-237-3377



\$429,900
 MLS 7014428 Residential
 58988 County Highway 50
 Deer Creek MN 56527

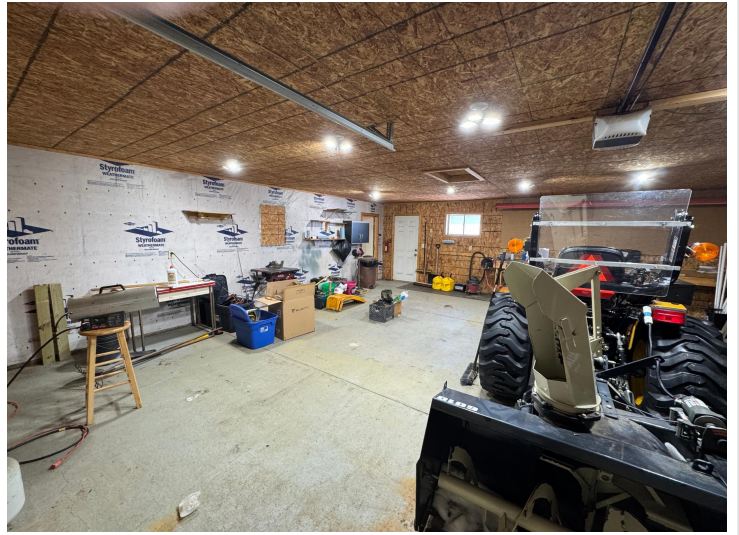


website: www.AffinityRealEstate.com | email: info@affinityrealestate.com | office: 218-237-3333 | fax: 218-237-3377



\$429,900

MLS 7014428 Residential
58988 County Highway 50
Deer Creek MN 56527



website: www.AffinityRealEstate.com | email: info@affinityrealestate.com | office: 218-237-3333 | fax: 218-237-3377

Affinity
REAL ESTATE INC

\$429,900
MLS 7014428 Residential
58988 County Highway 50
Deer Creek MN 56527