



MLS 7014483 Lake Home

\$799,900

3,008 sq ft
3 bedrooms
2 baths

6286 Highland Scenic Road
Baxter MN 56425

Waterfront: Perch Lake (Baxter City)

Status: Active

Description:

Welcome to lake life on Perch Lake! This beautifully maintained 3-bedroom, 2-bathroom home offers over 3,000+ finished square feet and sits on a level lot with approximately 100+ feet of sandy shoreline in the heart of Baxter. Inside, you'll love the spacious lakeside living room with a fireplace, large windows overlooking the water, and an open layout that flows perfectly for entertaining or relaxing at the lake. The home features multiple gathering spaces, updated mechanicals, and a drain tile system with generator backup for added peace of mind year-round. Step outside to enjoy the lakeside deck, private dock, and incredible sunset views across Perch Lake. The oversized detached garage provides excellent storage for all the lake toys. One of the property's most unique features is the front yard wiffleball field known as "Perch Park" — the perfect setup for summer games and making memories with family and friends. Conveniently located close to Baxter amenities. This is your opportunity to own a turnkey lake property with space to entertain both indoors and out.

The hot tub is not included in the sale.

Additional Details:

Year Built	1980
Lot Acres	0.87
Lot Dimensions	103x375x106x377
Garage Stalls	5
School District	181
Taxes	\$6,120
Taxes with Assessments	\$6,120
Tax Year	2025

Additional Features:

Basement: Block, Finished, Sump Pump **Fuel:** Natural Gas **Garage:** 5 **Heat:** Forced Air, Fireplace(s) **Sewer:** City Sewer/Connected **Water:** City Water/Connected **Air Conditioning:** Central Air

Driving Directions:

From 371 head West. Go through the round about and the property



Listed By:
Woods to Water Real Estate

Affinity Real Estate Inc. participates in the Regional Multiple Listing Service of Minnesota, Inc Broker Reciprocity (sm) program, allowing us to display other broker's listings on our website. All properties are subject to prior sale, change or withdrawal.



Call Affinity Real Estate

218-237-3333

info@affinityrealestate.com



Affinity Real Estate - 600 Park Avenue South - Park Rapids MN 56470



website: www.AffinityRealEstate.com | email: info@affinityrealestate.com | office: 218-237-3333 | fax:218-237-3377

Affinity
REAL ESTATE INC

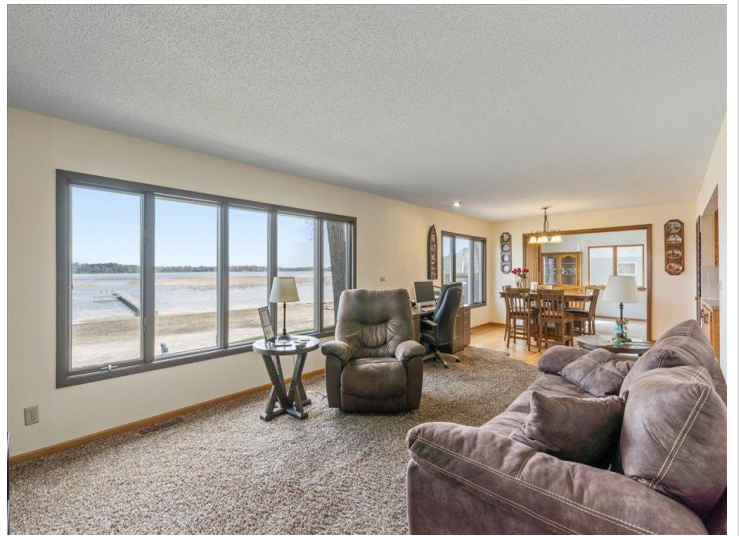
\$799,900
MLS 7014483 Lake Home
6286 Highland Scenic Road
Baxter MN 56425



website: www.AffinityRealEstate.com | email: info@affinityrealestate.com | office: 218-237-3333 | fax:218-237-3377

Affinity
REAL ESTATE INC

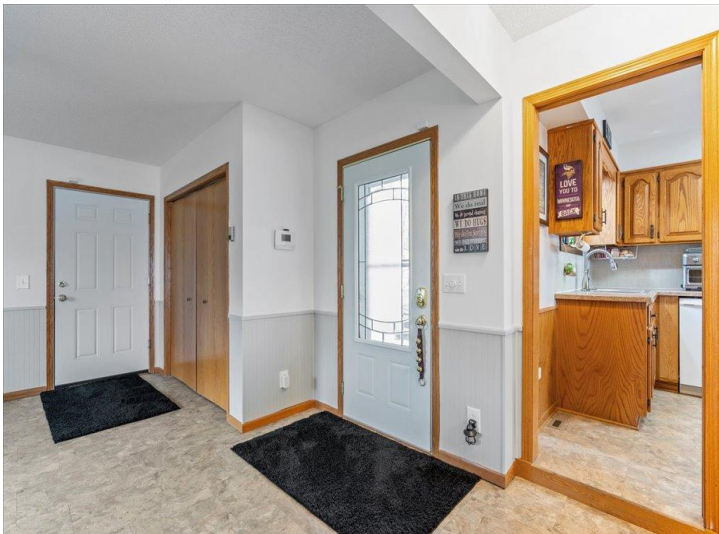
\$799,900
MLS 7014483 Lake Home
6286 Highland Scenic Road
Baxter MN 56425



website: www.AffinityRealEstate.com | email: info@affinityrealestate.com | office: 218-237-3333 | fax: 218-237-3377

Affinity
REAL ESTATE INC

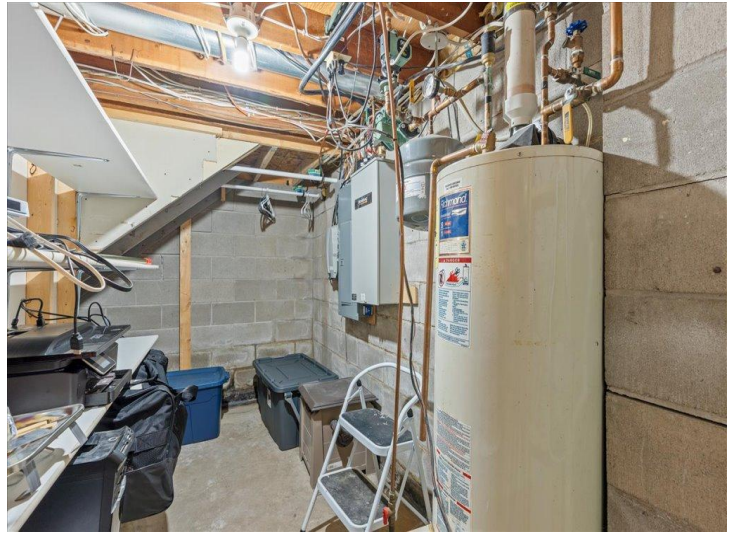
\$799,900
MLS 7014483 Lake Home
6286 Highland Scenic Road
Baxter MN 56425



website: www.AffinityRealEstate.com | email: info@affinityrealestate.com | office: 218-237-3333 | fax:218-237-3377



\$799,900
MLS 7014483 Lake Home
6286 Highland Scenic Road
Baxter MN 56425



website: www.AffinityRealEstate.com | email: info@affinityrealestate.com | office: 218-237-3333 | fax: 218-237-3377

Affinity
REAL ESTATE INC

\$799,900
MLS 7014483 Lake Home
6286 Highland Scenic Road
Baxter MN 56425



website: www.AffinityRealEstate.com | email: info@affinityrealestate.com | office: 218-237-3333 | fax:218-237-3377



\$799,900
MLS 7014483 Lake Home
6286 Highland Scenic Road
Baxter MN 56425



website: www.AffinityRealEstate.com | email: info@affinityrealestate.com | office: 218-237-3333 | fax:218-237-3377



\$799,900
MLS 7014483 Lake Home
6286 Highland Scenic Road
Baxter MN 56425



website: www.AffinityRealEstate.com | email: info@affinityrealestate.com | office: 218-237-3333 | fax:218-237-3377



\$799,900
MLS 7014483 Lake Home
6286 Highland Scenic Road
Baxter MN 56425



website: www.AffinityRealEstate.com | email: info@affinityrealestate.com | office: 218-237-3333 | fax:218-237-3377



\$799,900
MLS 7014483 Lake Home
6286 Highland Scenic Road
Baxter MN 56425



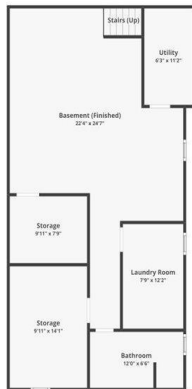
6286 Highland Scenic Rd, Baxter, MN 56425



Floor 1

Floor plans are for informational purposes only and not for construction or design use. Measurements are approximate, and square footage may include finished and unfinished areas.

6286 Highland Scenic Rd, Baxter, MN 56425



Basement

Floor plans are for informational purposes only and not for construction or design use. Measurements are approximate, and square footage may include finished and unfinished areas.

6286 Highland Scenic Rd, Baxter, MN 56425



FLOOR 1

BASEMENT

Floor plans are for informational purposes only and not for construction or design use. Measurements are approximate, and square footage may include finished and unfinished areas.

website: www.AffinityRealEstate.com | email: info@affinityrealestate.com | office: 218-237-3333 | fax: 218-237-3377



\$799,900
 MLS 7014483 Lake Home
 6286 Highland Scenic Road
 Baxter MN 56425