



MLS 7014583 Residential

\$362,400

1,430 sq ft
3 bedrooms
2 baths

20957 Woods Edge Court
Ironton MN 56455

Status: Active

Description:

Road will be paved, association fees are for road maintenance. Welcome to a community where convenience meets the outdoors! Just minutes from Serpent Lake, downtown Crosby, and the local hospital, this inviting new development offers privacy without sacrificing location. With nearby access to biking trails, parks, schools, and year-round recreation, it's the ideal place to build a home and make lasting memories! This spacious single-story house features three bedrooms, two bathrooms, elegant granite countertops throughout, and stainless steel appliances in the kitchen. The master bedroom offers a private bathroom for added comfort. Other developments, lots, and floor plans available!

Additional Details:

| | |
|------------------------|-------|
| Year Built | 2026 |
| Lot Acres | 0.11 |
| Lot Dimensions | 77x61 |
| Garage Stalls | 2 |
| School District | 904 |
| Taxes | \$106 |
| Taxes with Assessments | \$106 |
| Tax Year | 2025 |

Additional Features:

Basement: None **Fuel:** Array **Garage:** 2 **Heat:** Forced Air **Sewer:** Private Sewer, Tank with Drainage Field **Water:** Shared System, Well **Air Conditioning:** Central Air

Driving Directions:

Take Hwy 210 to Superior Ave, turn right. Turn right onto Bergren Road, then turn right onto Woods Edge Court. The property will be on the left.



Listed By:
Counselor Realty Brainerd Lakes

Affinity Real Estate Inc. participates in the Regional Multiple Listing Service of Minnesota, Inc Broker Reciprocity (sm) program, allowing us to display other broker's listings on our website. All properties are subject to prior sale, change or withdrawal.



Call Affinity Real Estate

218-237-3333

info@affinityrealestate.com



Affinity Real Estate - 600 Park Avenue South - Park Rapids MN 56470



website: www.AffinityRealEstate.com | email: info@affinityrealestate.com | office: 218-237-3333 | fax: 218-237-3377



\$362,400
 MLS 7014583 Residential
 20957 Woods Edge Court
 Ironton MN 56455



website: www.AffinityRealEstate.com | email: info@affinityrealestate.com | office: 218-237-3333 | fax: 218-237-3377

Affinity
REAL ESTATE INC

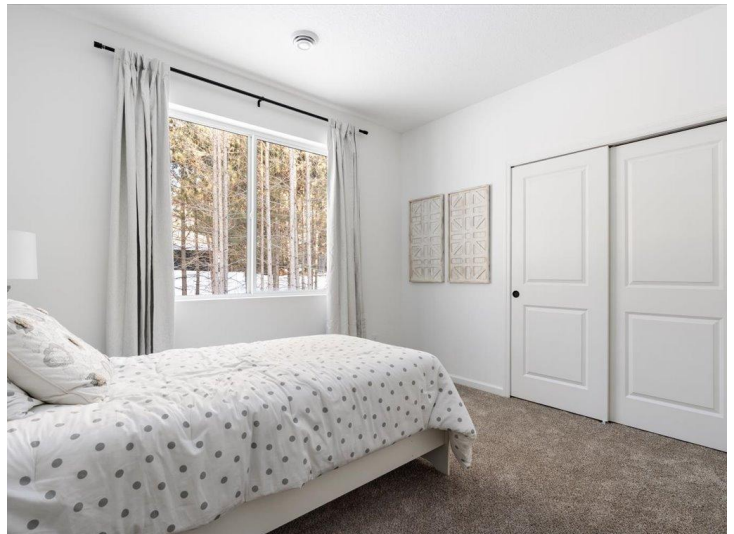
\$362,400
MLS 7014583 Residential
20957 Woods Edge Court
Ironton MN 56455



website: www.AffinityRealEstate.com | email: info@affinityrealestate.com | office: 218-237-3333 | fax: 218-237-3377



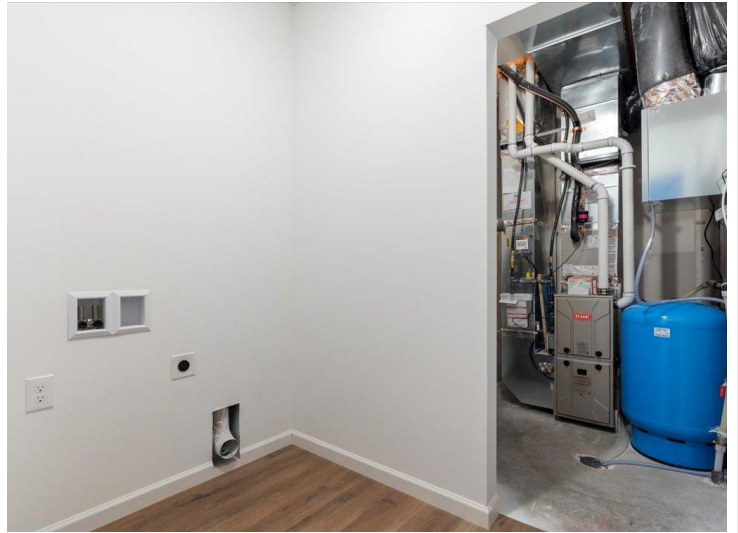
\$362,400
 MLS 7014583 Residential
 20957 Woods Edge Court
 Ironton MN 56455



website: www.AffinityRealEstate.com | email: info@affinityrealestate.com | office: 218-237-3333 | fax: 218-237-3377



\$362,400
 MLS 7014583 Residential
 20957 Woods Edge Court
 Ironton MN 56455



website: www.AffinityRealEstate.com | email: info@affinityrealestate.com | office: 218-237-3333 | fax: 218-237-3377



\$362,400
MLS 7014583 Residential
20957 Woods Edge Court
Ironton MN 56455