

MLS 7014740 Land

**\$299,000**

35.28 Acres  
Raw Land

6005 Oakdale Road  
Baxter MN 56425

Status: Active

**Description:**

Sizable residential development plot spanning over 35 acres, located in Baxter, just south of Forestview Middle School. This property offers an ideal investment opportunity for developers within the Brainerd/Baxter Area. Conveniently situated near schools, places of worship, retail outlets, restaurants, entertainment venues, and recreational facilities.

**Additional Details:**

Lot Acres	35.28
Lot Dimensions	1288x1117x331x40x956x1251
School District	896
Taxes	\$888
Taxes with Assessments	\$888
Tax Year	2025

**Additional Features:**

**Driving Directions:**

From Hwy 210/371 intersection in Baxter - South on Hwy 371 - West on Highland Scenic Drive (CR 48) - South on Ironwood Drive S - South on Jasperwood Drive - West on Oakdale Road - Property's NE corner is at the end of the road



Listed By:  
Close-Converse Commercial Prop

Affinity Real Estate Inc. participates in the Regional Multiple Listing Service of Minnesota, Inc Broker Reciprocity (sm) program, allowing us to display other broker's listings on our website. All properties are subject to prior sale, change or withdrawal.



**Call Affinity Real Estate**

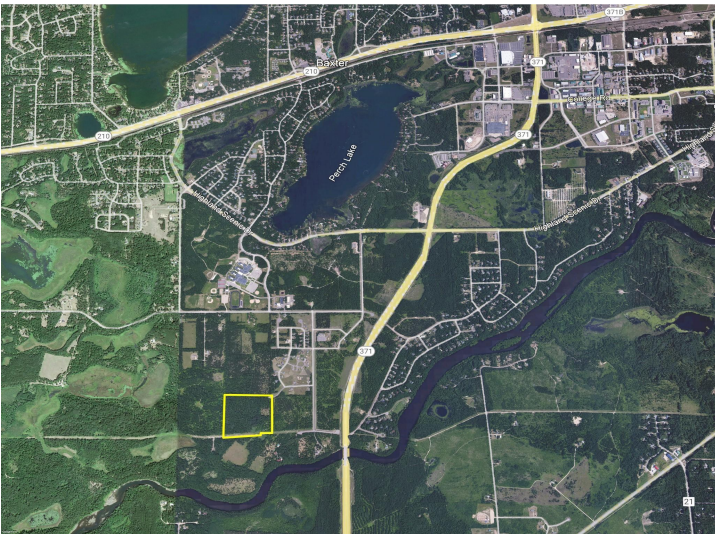
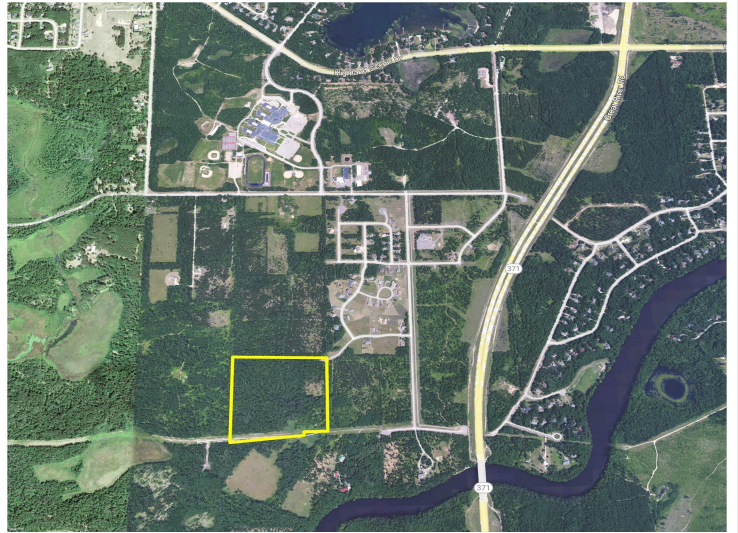
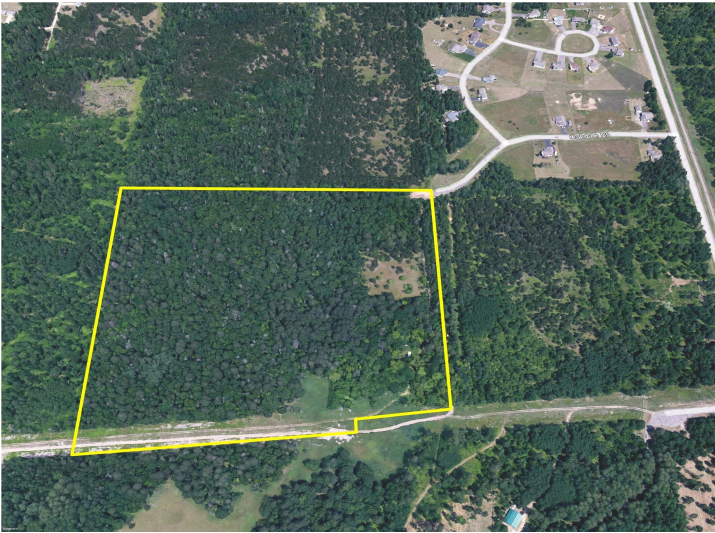
**218-237-3333**

**info@affinityrealestate.com**



**Affinity Real Estate - 600 Park Avenue South - Park Rapids MN 56470**



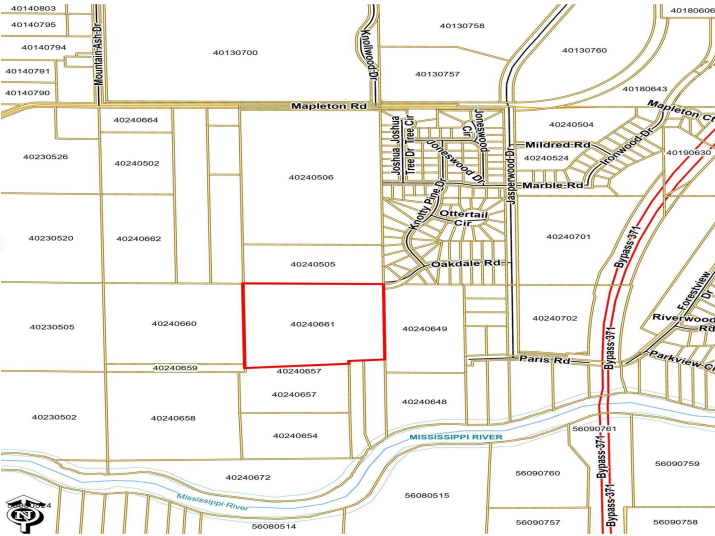
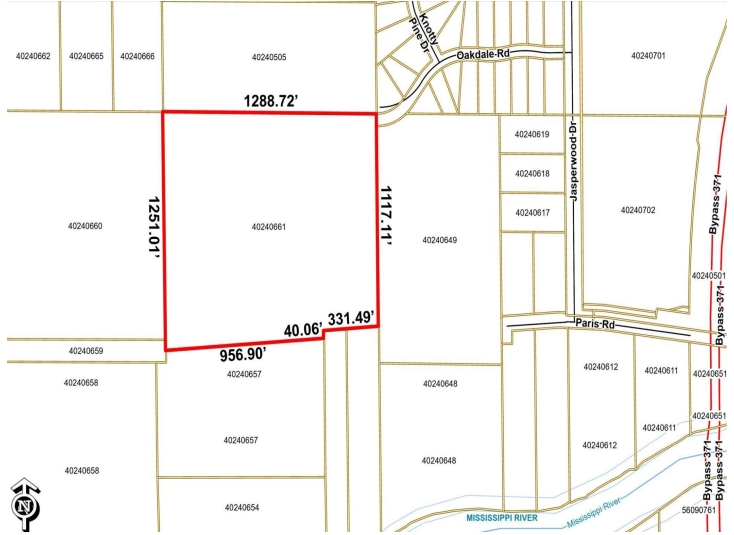
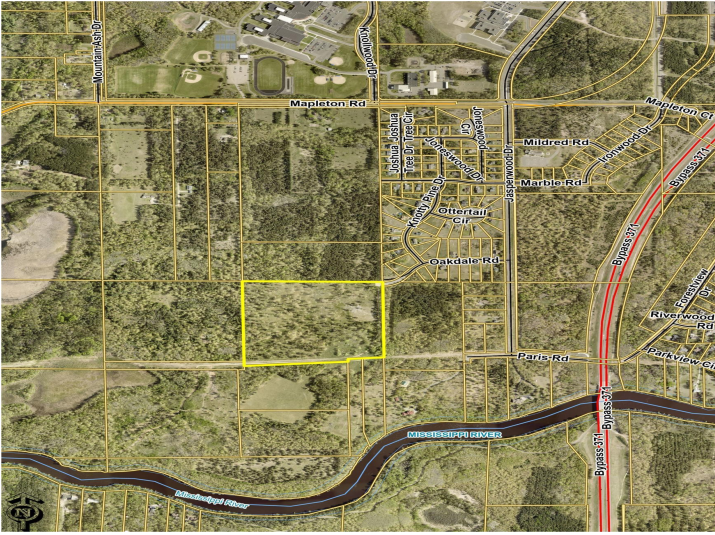


website: [www.AffinityRealEstate.com](http://www.AffinityRealEstate.com) | email: [info@affinityrealestate.com](mailto:info@affinityrealestate.com) | office: 218-237-3333 | fax: 218-237-3377

**Affinity**  
REAL ESTATE INC

**\$299,000**  
MLS 7014740 Land  
6005 Oakdale Road  
Baxter MN 56425





website: [www.AffinityRealEstate.com](http://www.AffinityRealEstate.com) | email: [info@affinityrealestate.com](mailto:info@affinityrealestate.com) | office: 218-237-3333 | fax: 218-237-3377



**\$299,000**  
 MLS 7014740 Land  
 6005 Oakdale Road  
 Baxter MN 56425