



MLS 7015141 Residential

\$2,500,000

6,105 sq ft
6 bedrooms
5 baths

24105 Hazel Wood Drive
Park Rapids MN 56470

Status: Active

Description:

A once-in-a-generation opportunity to own one of Potato Lake's premier landmark estates just outside Park Rapids. Set on over six private acres with an exceptional 383 feet of shoreline, this elevated bluff-top property delivers rare scale, privacy, and sweeping, unobstructed lake views that few homes can replicate. Spanning over 6,000 square feet, the six-bedroom, five-bath custom residence reflects a commitment to high-end craftsmanship throughout. Rich hardwood floors anchor expansive living spaces, complemented by a wood-burning fireplace and multiple areas designed for entertaining and gathering. The chef's kitchen is finished to an exceptional standard with custom cabinetry and thickened-edge quartzite and quartz countertops throughout, while the primary suite offers a true spa experience highlighted by a steam shower. Outdoor living is equally refined. Immaculate, professionally maintained landscaping flows from the paved driveway all the way to the water's edge, creating a polished sense of arrival. A spacious patio with automatic retractable screens extends seasonal enjoyment, while a hot tub, lakefront bunkhouse, and an impressive 70x45 heated shop provide flexibility rarely found at the lake. With estate-level frontage, expansive acreage, commanding elevation, and high-end construction throughout, properties of this caliber seldom come to market. This is not simply a lake home, it is one of Potato Lake's finest estates.

Additional Details:

Year Built	2022
Lot Acres	6.04
Lot Dimensions	Irregular
Garage Stalls	5
School District	1384
Taxes	\$11,540
Taxes with Assessments	\$11,540
Tax Year	2025

Additional Features:

Fuel: Array **Heat:** Baseboard, Ductless Mini-Split, Forced Air, Fireplace(s), Heat Pump, Humidifier, In-Floor Heating

Driving Directions:

From 24/74 intersection head north for 7 miles and turn east on County 40 for 2.0 miles to Hazel Wood Dr. Look for real estate sign on the left. Look for real estate sign on the left and house on the right.



Affinity Real Estate Inc. participates in the Regional Multiple Listing Service of Minnesota, Inc Broker Reciprocity (sm) program, allowing us to display other broker's listings on our website. All properties are subject to prior sale, change or withdrawal.



Call Affinity Real Estate

218-237-3333

info@affinityrealestate.com



Affinity Real Estate - 600 Park Avenue South - Park Rapids MN 56470



website: www.AffinityRealEstate.com | email: info@affinityrealestate.com | office: 218-237-3333 | fax: 218-237-3377

Affinity
REAL ESTATE INC

\$2,500,000

MLS 7015141 Residential
24105 Hazel Wood Drive
Park Rapids MN 56470

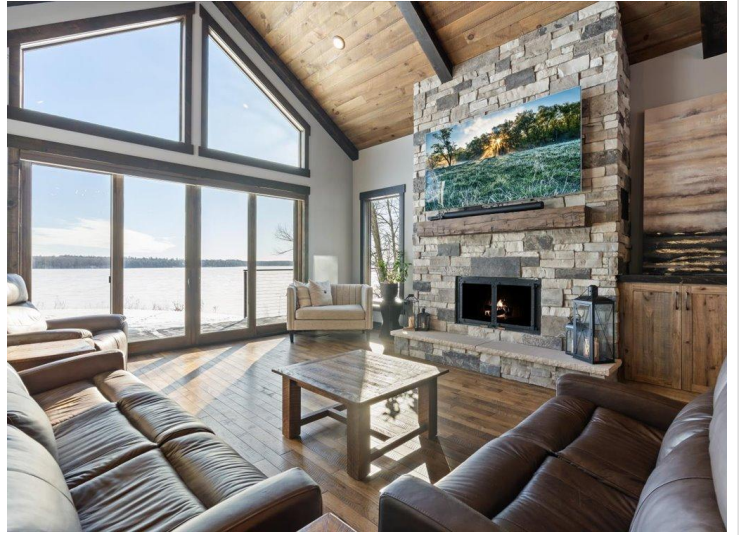
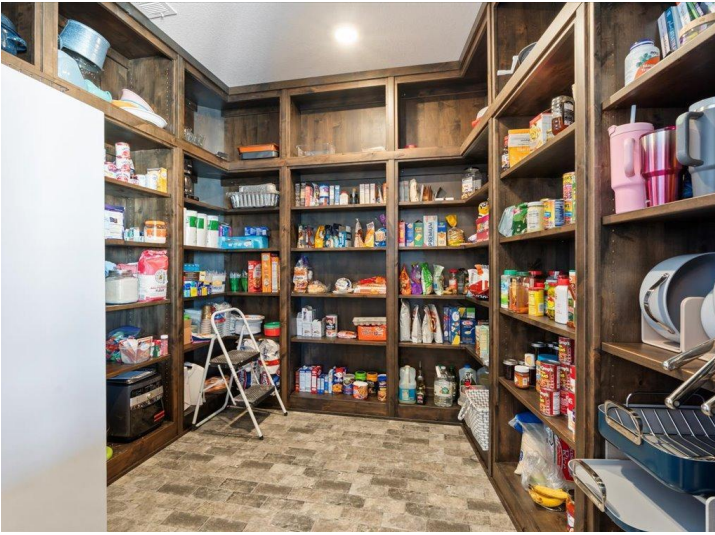


website: www.AffinityRealEstate.com | email: info@affinityrealestate.com | office: 218-237-3333 | fax: 218-237-3377



\$2,500,000

MLS 7015141 Residential
24105 Hazel Wood Drive
Park Rapids MN 56470



website: www.AffinityRealEstate.com | email: info@affinityrealestate.com | office: 218-237-3333 | fax: 218-237-3377

Affinity
REAL ESTATE INC

\$2,500,000

MLS 7015141 Residential
24105 Hazel Wood Drive
Park Rapids MN 56470



website: www.AffinityRealEstate.com | email: info@affinityrealestate.com | office: 218-237-3333 | fax: 218-237-3377

Affinity
REAL ESTATE INC

\$2,500,000

MLS 7015141 Residential
24105 Hazel Wood Drive
Park Rapids MN 56470

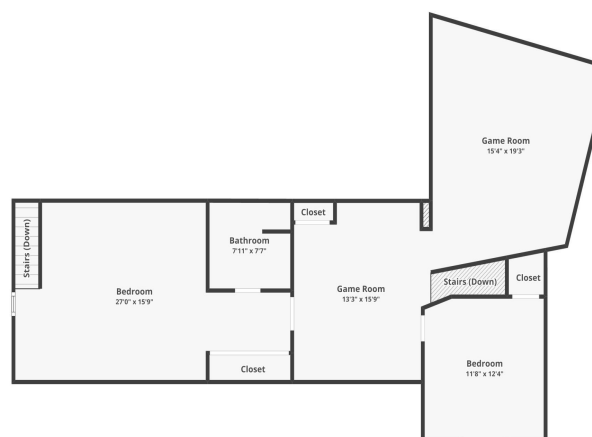
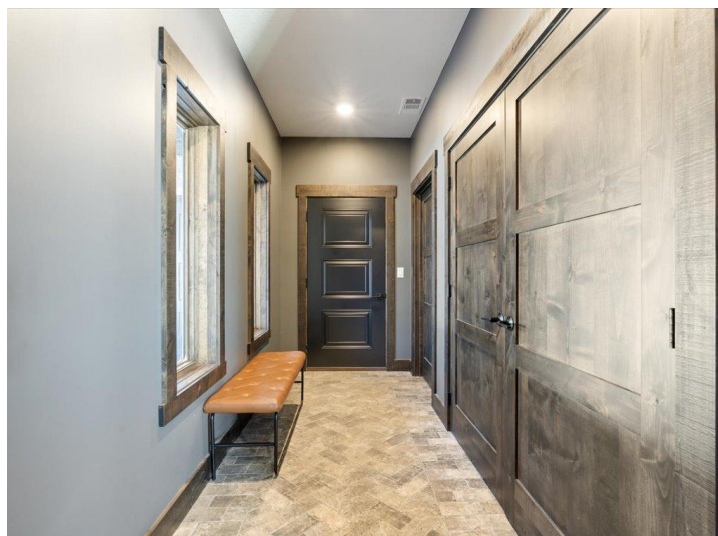


website: www.AffinityRealEstate.com | email: info@affinityrealestate.com | office: 218-237-3333 | fax: 218-237-3377

Affinity
REAL ESTATE INC

\$2,500,000

MLS 7015141 Residential
24105 Hazel Wood Drive
Park Rapids MN 56470



24105 Hazel Wood Dr, Park Rapids, MN 56470

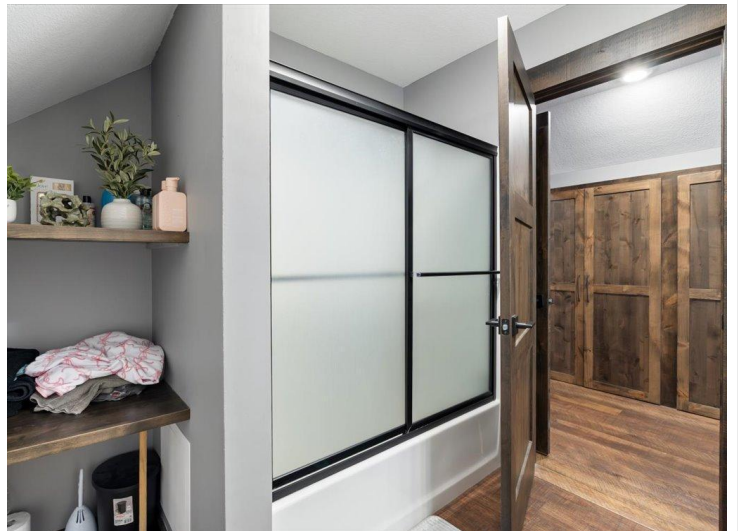
Floor 2

Floor plans/boor cannot be used for building or design purposes. Sizes and dimensions are approximate.

Floor plans/true cannot be used for building or design purposes. Sizes and dimensions are approximate.



Page 7 of 14



website: www.AffinityRealEstate.com | email: info@affinityrealestate.com | office: 218-237-3333 | fax: 218-237-3377

Affinity
REAL ESTATE INC

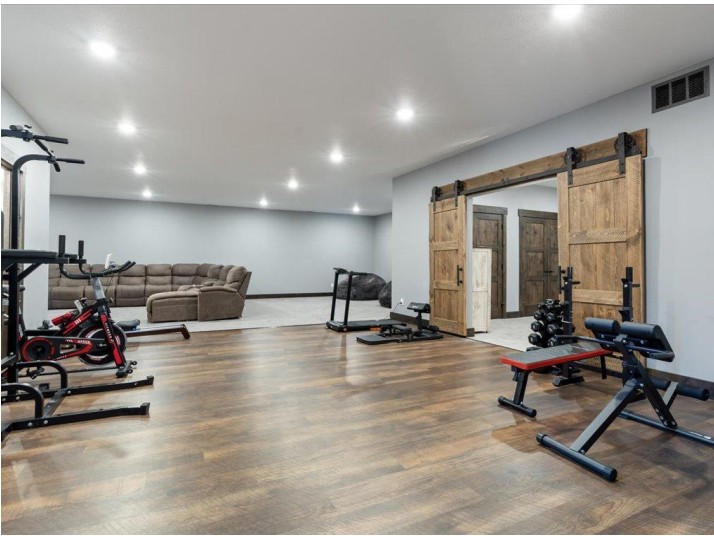
\$2,500,000

MLS 7015141 Residential
24105 Hazel Wood Drive
Park Rapids MN 56470



24105 Hazel Wood Dr, Park Rapids, MN 56470
Basement

Floor plan/section cannot be used for building or design purposes. Sizes and dimensions are approximate.

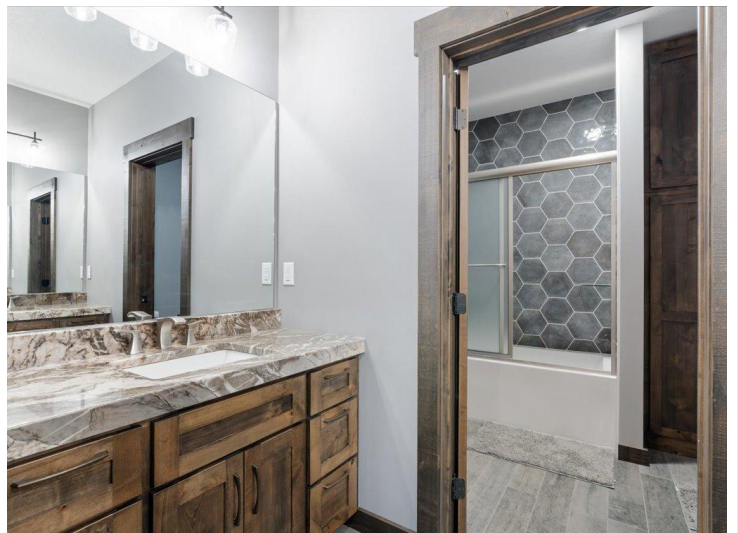


website: www.AffinityRealEstate.com | email: info@affinityrealestate.com | office: 218-237-3333 | fax: 218-237-3377

Affinity
REAL ESTATE INC

\$2,500,000

MLS 7015141 Residential
24105 Hazel Wood Drive
Park Rapids MN 56470



website: www.AffinityRealEstate.com | email: info@affinityrealestate.com | office: 218-237-3333 | fax: 218-237-3377



\$2,500,000

MLS 7015141 Residential
24105 Hazel Wood Drive
Park Rapids MN 56470

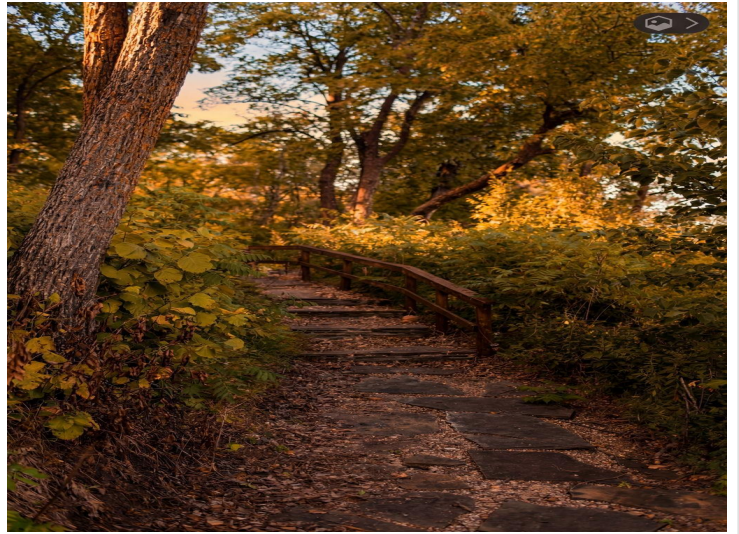


website: www.AffinityRealEstate.com | email: info@affinityrealestate.com | office: 218-237-3333 | fax: 218-237-3377

Affinity
REAL ESTATE INC

\$2,500,000

MLS 7015141 Residential
24105 Hazel Wood Drive
Park Rapids MN 56470



website: www.AffinityRealEstate.com | email: info@affinityrealestate.com | office: 218-237-3333 | fax: 218-237-3377



\$2,500,000

MLS 7015141 Residential
24105 Hazel Wood Drive
Park Rapids MN 56470



website: www.AffinityRealEstate.com | email: info@affinityrealestate.com | office: 218-237-3333 | fax: 218-237-3377



\$2,500,000

MLS 7015141 Residential
24105 Hazel Wood Drive
Park Rapids MN 56470



website: www.AffinityRealEstate.com | email: info@affinityrealestate.com | office: 218-237-3333 | fax: 218-237-3377



\$2,500,000

MLS 7015141 Residential
24105 Hazel Wood Drive
Park Rapids MN 56470