



MLS 7015225 Residential

\$2,500,000

4,148 sq ft
6 bedrooms
4 baths

13176 Albinson Road
Crosslake MN 56442

Status: Coming Soon

Description:

Experience exceptional lakeside living on the Whitefish Chain with this remarkable 6-bedroom, 4-bath retreat showcasing over 460 feet of level, sandy shoreline. Perfectly designed for comfort, entertaining, and unforgettable lake days, this property blends luxury with the relaxed charm of Up North living.

A flagstone main entrance and circular driveway set the tone as you arrive, leading to a home filled with warm hardwood floors, vaulted ceilings, and soaring lakeside windows that maximize natural light and panoramic water views. The expansive primary en suite offers a private sanctuary complete with a custom-tiled bathroom and serene lake views. Ideal for hosting guests or extended family, the home features two full kitchens and two laundry rooms, offering unmatched convenience and flexibility. The walkout lower level extends your living space outdoors, opening to a beautiful stone patio perfect for relaxing, gathering after a day on the water and taking in the spectacular sunsets.

Custom stonework is thoughtfully integrated throughout the interior and exterior, enhancing the home's character and craftsmanship. Despite its private, wooded setting, the property offers easy access to local amenities, dining, and recreation—giving you the best of both privacy and convenience.

This rare combination of level sandy frontage, lot size, thoughtful design, and premium location on the Whitefish Chain makes this home a truly exceptional opportunity!

Additional Details:

Year Built	2016
Lot Acres	1.93
Lot Dimensions	474x254x187x278x50x466
Garage Stalls	5
School District	909
Taxes	\$8,938
Taxes with Assessments	\$8,938
Tax Year	2025

Additional Features:

Basement: Block, Daylight/Lookout Windows, Drain Tiled, Egress Window(s), Finished, Full, Storage Space, Walkout **Fuel:** Array **Garage:** 5
Heat: Forced Air, Fireplace(s) **Sewer:** Private Sewer, Tank with Drainage Field **Water:** Drilled, Private, Well **Air Conditioning:** Central Air



Listed By:

Northland Sotheby's International Realty

Affinity Real Estate Inc. participates in the Regional Multiple Listing Service of Minnesota, Inc Broker Reciprocity (sm) program, allowing us to display other broker's listings on our website. All properties are subject to prior sale, change or withdrawal.



Call Affinity Real Estate

218-237-3333

info@affinityrealestate.com

MLS



Affinity Real Estate - 600 Park Avenue South - Park Rapids MN 56470



website: www.AffinityRealEstate.com | email: info@affinityrealestate.com | office: 218-237-3333 | fax: 218-237-3377

Affinity
REAL ESTATE INC

\$2,500,000
MLS 7015225 Residential
13176 Albinson Road
Crosslake MN 56442



website: www.AffinityRealEstate.com | email: info@affinityrealestate.com | office: 218-237-3333 | fax: 218-237-3377

Affinity
REAL ESTATE INC

\$2,500,000
MLS 7015225 Residential
13176 Albinson Road
Crosslake MN 56442



website: www.AffinityRealEstate.com | email: info@affinityrealestate.com | office: 218-237-3333 | fax: 218-237-3377

Affinity
REAL ESTATE INC

\$2,500,000
MLS 7015225 Residential
13176 Albinson Road
Crosslake MN 56442



website: www.AffinityRealEstate.com | email: info@affinityrealestate.com | office: 218-237-3333 | fax: 218-237-3377

Affinity
REAL ESTATE INC

\$2,500,000
MLS 7015225 Residential
13176 Albinson Road
Crosslake MN 56442



website: www.AffinityRealEstate.com | email: info@affinityrealestate.com | office: 218-237-3333 | fax: 218-237-3377

Affinity
REAL ESTATE INC

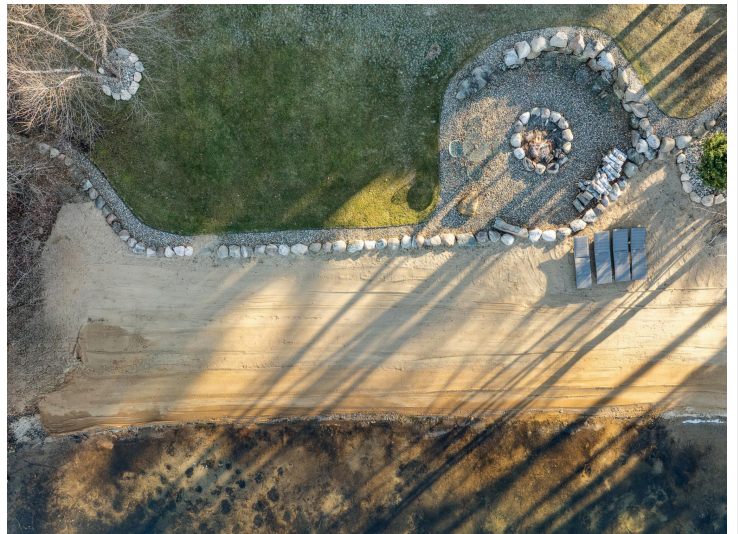
\$2,500,000
MLS 7015225 Residential
13176 Albinson Road
Crosslake MN 56442



website: www.AffinityRealEstate.com | email: info@affinityrealestate.com | office: 218-237-3333 | fax: 218-237-3377



\$2,500,000
 MLS 7015225 Residential
 13176 Albinson Road
 Crosslake MN 56442



website: www.AffinityRealEstate.com | email: info@affinityrealestate.com | office: 218-237-3333 | fax: 218-237-3377

Affinity
REAL ESTATE INC

\$2,500,000
MLS 7015225 Residential
13176 Albinson Road
Crosslake MN 56442



website: www.AffinityRealEstate.com | email: info@affinityrealestate.com | office: 218-237-3333 | fax: 218-237-3377



\$2,500,000
 MLS 7015225 Residential
 13176 Albinson Road
 Crosslake MN 56442



website: www.AffinityRealEstate.com | email: info@affinityrealestate.com | office: 218-237-3333 | fax: 218-237-3377



\$2,500,000
 MLS 7015225 Residential
 13176 Albinson Road
 Crosslake MN 56442



website: www.AffinityRealEstate.com | email: info@affinityrealestate.com | office: 218-237-3333 | fax: 218-237-3377



\$2,500,000
 MLS 7015225 Residential
 13176 Albinson Road
 Crosslake MN 56442