

MLS 7015558 Residential

\$1,200,000

2,520 sq ft
2 bedrooms
2 baths

23729 Cooley Drive
Brainerd MN 56401

Status: Active

Description:

RARE 40 ACRE PRIVATE ESTATE * GUEST HOUSE * 14+ GARAGE PARKING SPACES.
Exceptional 40-acre private Northwoods retreat in Pine Center near Brainerd, surrounded by state land on two sides for unmatched privacy. A paved 1/4 -mile driveway leads to beautifully maintained home offering a true up-north lifestyle, featuring hot tub, infrared sauna, and heating options including forced air or wood-burning fireplace. A fully equipped one-bedroom quest house includes all amenities, a 2-car garage, and extended man-cave/workshop space. The property also features a separate large garage with a temperature-controlled root cellar/storm shelter (plumbed for running water), multiple outbuildings, greenhouse, raised garden beds, fruit trees, and a large dog kennel. At least 14 garage parking spaces provide ample room for vehicles, trailers, and guests. Ideal for private retreat, hobby farm, recreational use, or multigenerational living. Property septic/well can accommodate additions to property. Just 30 minutes to Brainerd/Costco

Additional Details:

| | |
|------------------------|---------------------|
| Year Built | 1987 |
| Lot Acres | 40 |
| Lot Dimensions | 1292x1314x1297x1317 |
| Garage Stalls | 8 |
| School District | 896 |
| Taxes | \$4,120 |
| Taxes with Assessments | \$4,120 |
| Tax Year | 2025 |

Additional Features:

Basement: None **Fuel:** Array **Garage:** 8 **Heat:** Forced Air, Fireplace(s), Wood Stove **Sewer:** Septic System Compliant - Yes **Water:** Well **Air Conditioning:** Ductless Mini-Split

Driving Directions:

Highway #210 East, to Country Road #25 to Left on County Road #2, to left on Coney Road #9, to right Cooley drive straight to property.



Listed By:
Keller Williams Classic Rlty NW

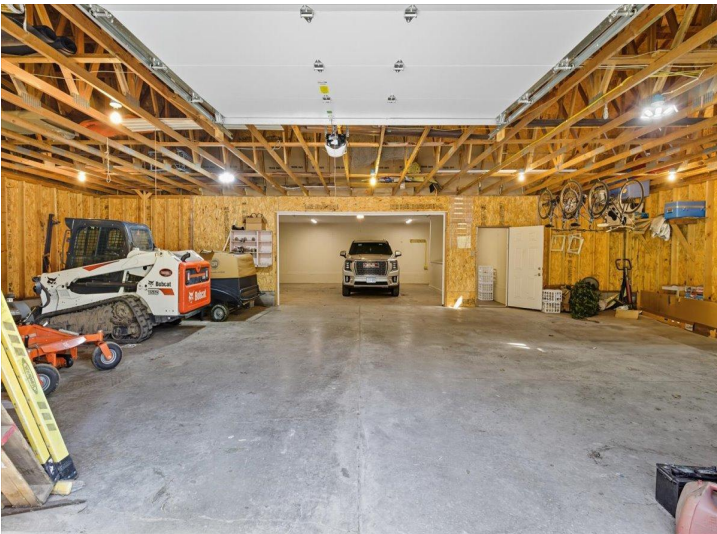
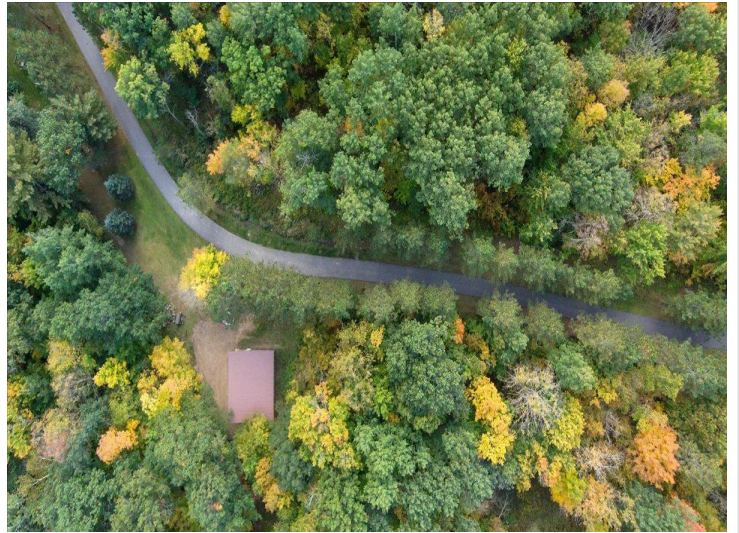
Affinity Real Estate Inc. participates in the Regional Multiple Listing Service of Minnesota, Inc Broker Reciprocity (sm) program, allowing us to display other broker's listings on our website. All properties are subject to prior sale, change or withdrawal.



Call Affinity Real Estate
218-237-3333
info@affinityrealestate.com



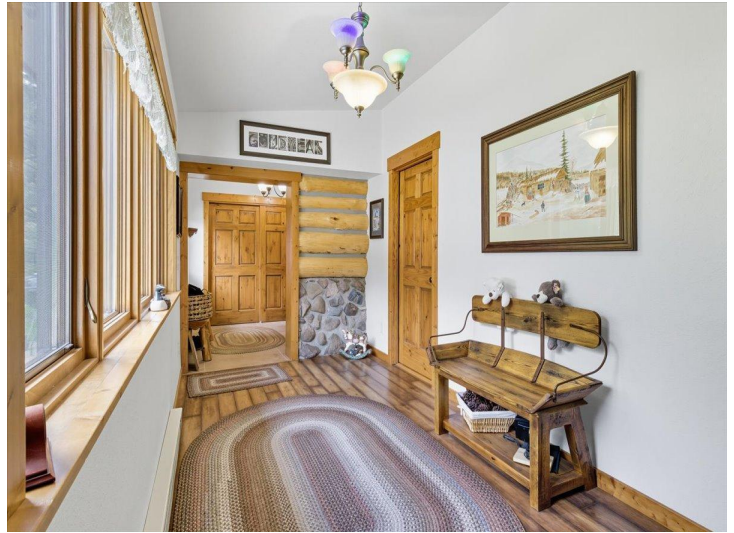
Affinity Real Estate - 600 Park Avenue South - Park Rapids MN 56470



website: www.AffinityRealEstate.com | email: info@affinityrealestate.com | office: 218-237-3333 | fax:218-237-3377

Affinity
REAL ESTATE INC

\$1,200,000
MLS 7015558 Residential
23729 Cooley Drive
Brainerd MN 56401



website: www.AffinityRealEstate.com | email: info@affinityrealestate.com | office: 218-237-3333 | fax: 218-237-3377

Affinity
REAL ESTATE INC

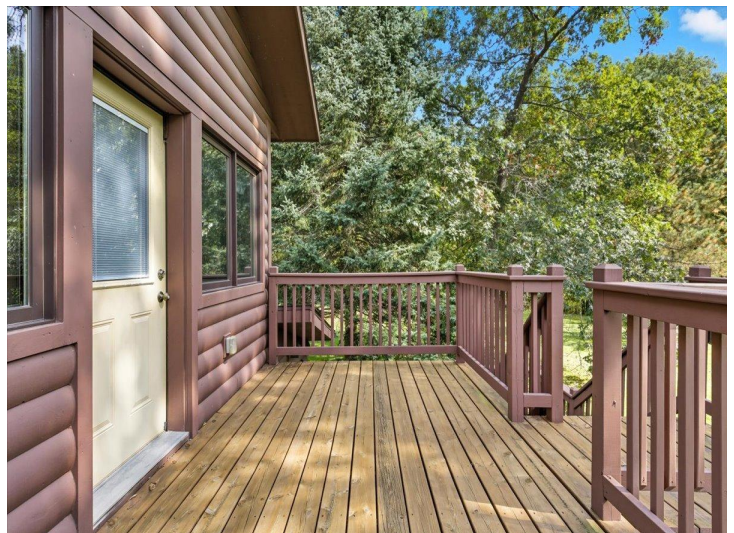
\$1,200,000
MLS 7015558 Residential
23729 Cooley Drive
Brainerd MN 56401



website: www.AffinityRealEstate.com | email: info@affinityrealestate.com | office: 218-237-3333 | fax:218-237-3377

Affinity
REAL ESTATE INC

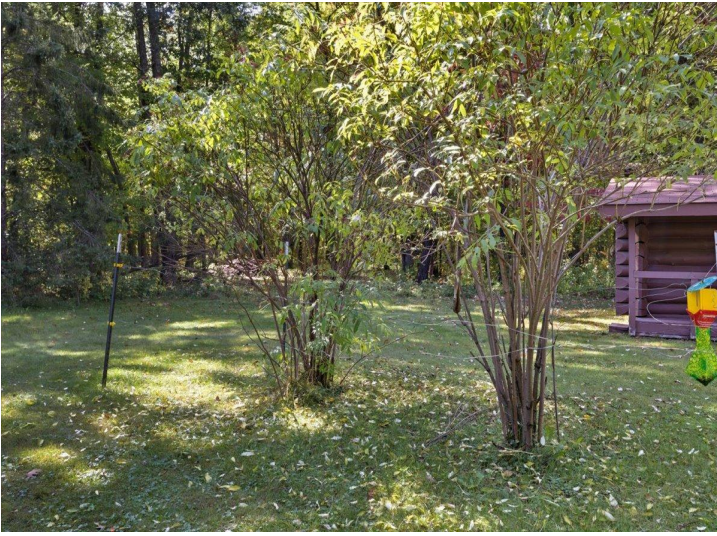
\$1,200,000
MLS 7015558 Residential
23729 Cooley Drive
Brainerd MN 56401



website: www.AffinityRealEstate.com | email: info@affinityrealestate.com | office: 218-237-3333 | fax:218-237-3377



\$1,200,000
MLS 7015558 Residential
23729 Cooley Drive
Brainerd MN 56401



website: www.AffinityRealEstate.com | email: info@affinityrealestate.com | office: 218-237-3333 | fax:218-237-3377



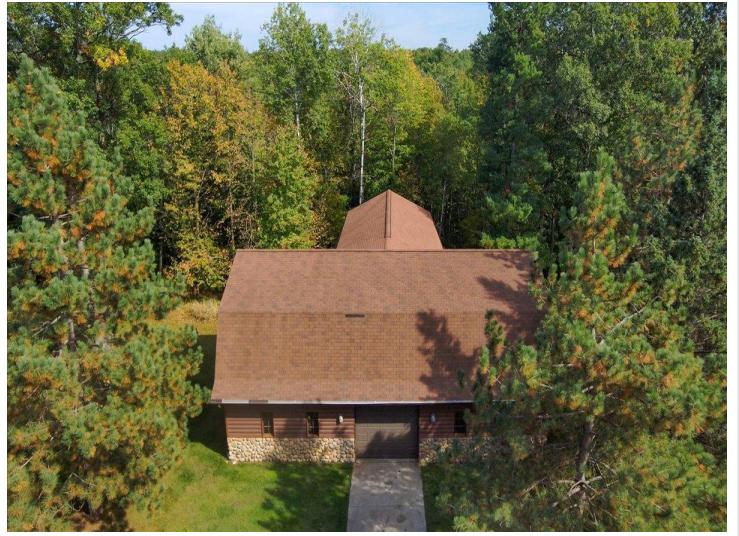
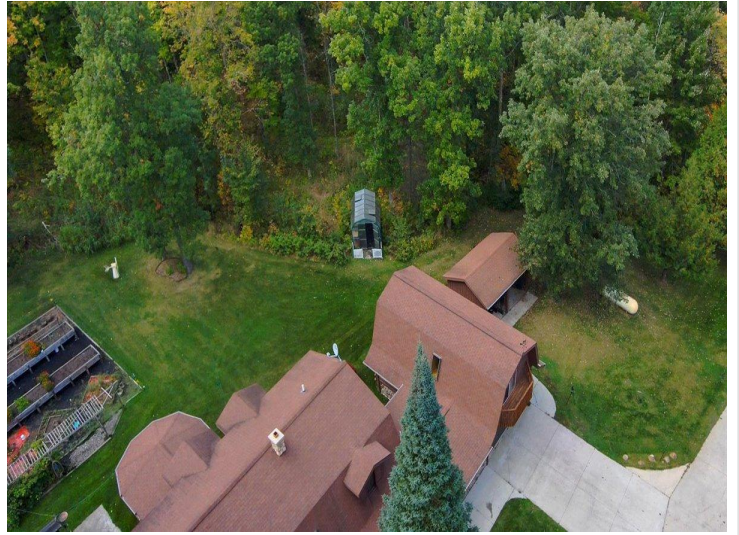
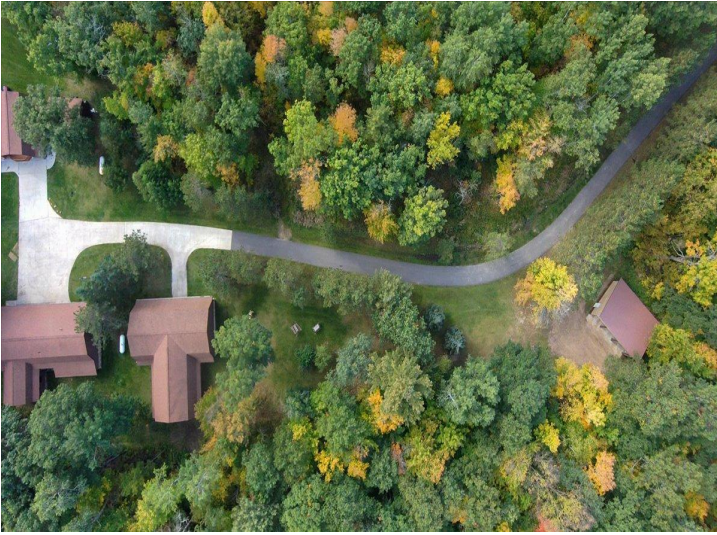
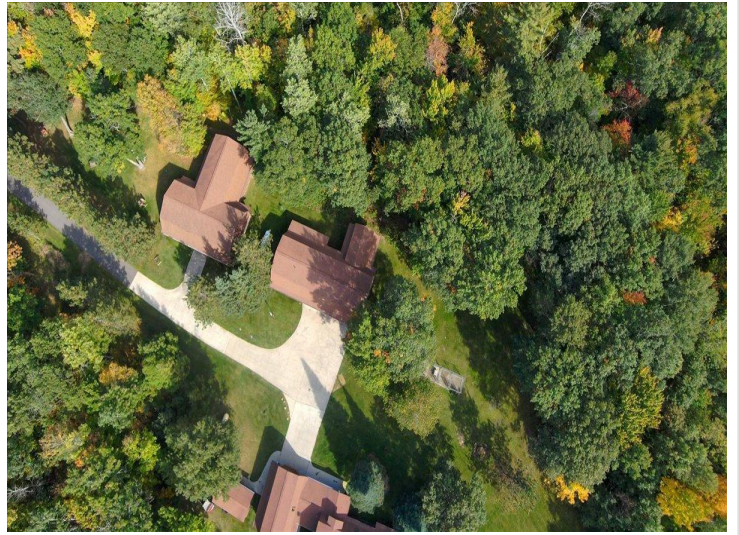
\$1,200,000
MLS 7015558 Residential
23729 Cooley Drive
Brainerd MN 56401



website: www.AffinityRealEstate.com | email: info@affinityrealestate.com | office: 218-237-3333 | fax:218-237-3377

Affinity
REAL ESTATE INC

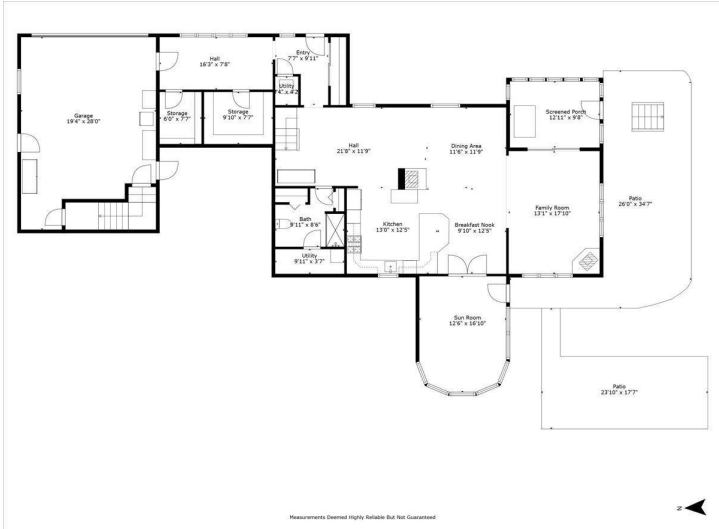
\$1,200,000
MLS 7015558 Residential
23729 Cooley Drive
Brainerd MN 56401



website: www.AffinityRealEstate.com | email: info@affinityrealestate.com | office: 218-237-3333 | fax:218-237-3377

Affinity
REAL ESTATE INC

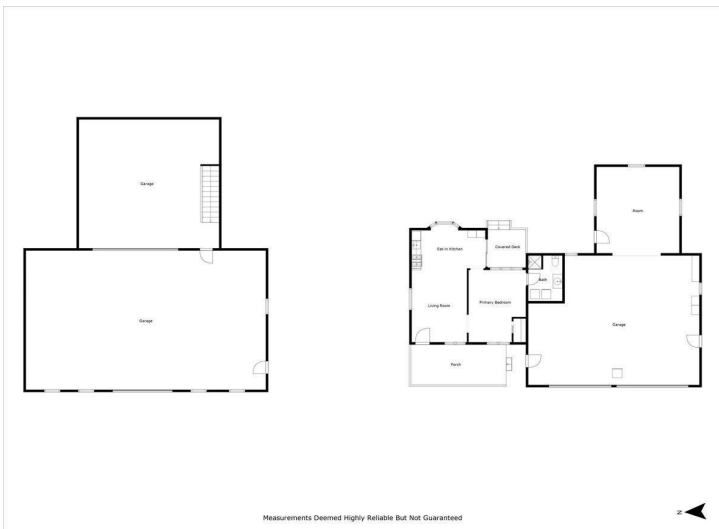
\$1,200,000
MLS 7015558 Residential
23729 Cooley Drive
Brainerd MN 56401



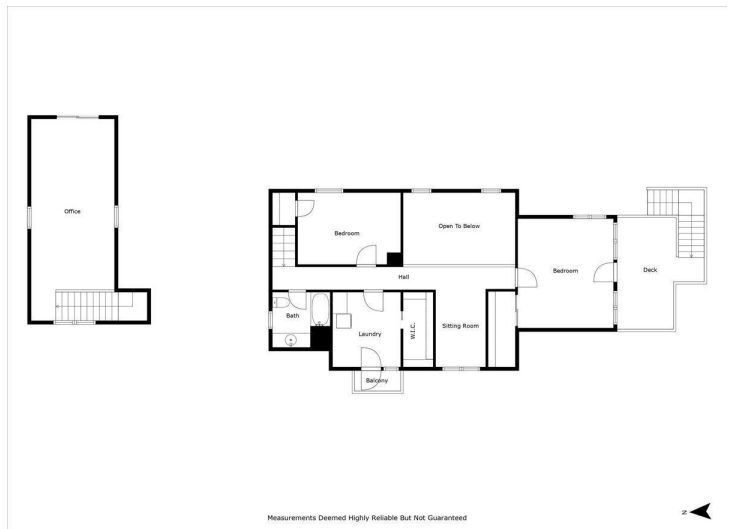
Measurements Deemed Highly Reliable But Not Guaranteed



Measurements Deemed Highly Reliable But Not Guaranteed



Measurements Deemed Highly Reliable But Not Guaranteed

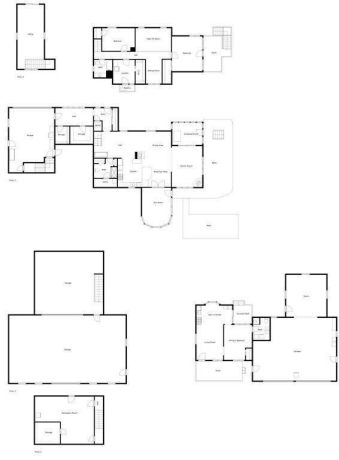


Measurements Deemed Highly Reliable But Not Guaranteed

website: www.AffinityRealEstate.com | email: info@affinityrealestate.com | office: 218-237-3333 | fax: 218-237-3377



\$1,200,000
 MLS 7015558 Residential
 23729 Cooley Drive
 Brainerd MN 56401



Measurements Deemed Highly Reliable But Not Guaranteed



website: www.AffinityRealEstate.com | email: info@affinityrealestate.com | office: 218-237-3333 | fax:218-237-3377



\$1,200,000
MLS 7015558 Residential
23729 Cooley Drive
Brainerd MN 56401