



MLS 7015593 Residential

**\$319,900**

960 sq ft  
2 bedrooms  
2 baths

3302 Telemark Trail  
Cushing MN 56443

Status: Active

#### Description:

Built in 2021 and set on over an acre of wooded land, this spacious and inviting shouse offers the perfect blend of modern comfort, privacy, and room to breathe. The open-concept layout feels bright and expansive, highlighted by beautiful Hickory wood cabinetry, a large kitchen island, and in-floor heat throughout both the home and the attached 2-stall garage for year-round comfort.

The generous primary suite features a private en suite bath and walk-in closet, while the second bedroom also includes a walk-in closet and easy access to a full bath. Wide, open living areas create a comfortable flow that feels much larger than expected, making the home ideal for both everyday living and entertaining.

Step outside to the screened-in porch overlooking a fenced-in yard, surrounded by trees that add to the sense of space and privacy. With efficient design, quality finishes, and a peaceful setting, this home delivers low-maintenance living that feels open, airy, and welcoming.

#### Additional Details:

Year Built	2021
Lot Acres	1.193
Lot Dimensions	142x302x78x105x365
Garage Stalls	2
School District	1062
Taxes	\$1,814
Taxes with Assessments	\$1,814
Tax Year	2025

#### Additional Features:

**Basement:** None **Fuel:** Array **Garage:** 2 **Heat:** Boiler, Forced Air, In-Floor Heating **Sewer:** Tank with Drainage Field **Water:** Drilled **Air Conditioning:** Central Air

#### Driving Directions:

from Hwy 10 and 210 intersection in Motley head south on Hwy10, turn left onto 3302 Telemark Trail, the property is at the end of cul-



Listed By:  
LPT Realty, LLC

Affinity Real Estate Inc. participates in the Regional Multiple Listing Service of Minnesota, Inc Broker Reciprocity (sm) program, allowing us to display other broker's listings on our website. All properties are subject to prior sale, change or withdrawal.



Call Affinity Real Estate

**218-237-3333**

[info@affinityrealestate.com](mailto:info@affinityrealestate.com)



Affinity Real Estate - 600 Park Avenue South - Park Rapids MN 56470



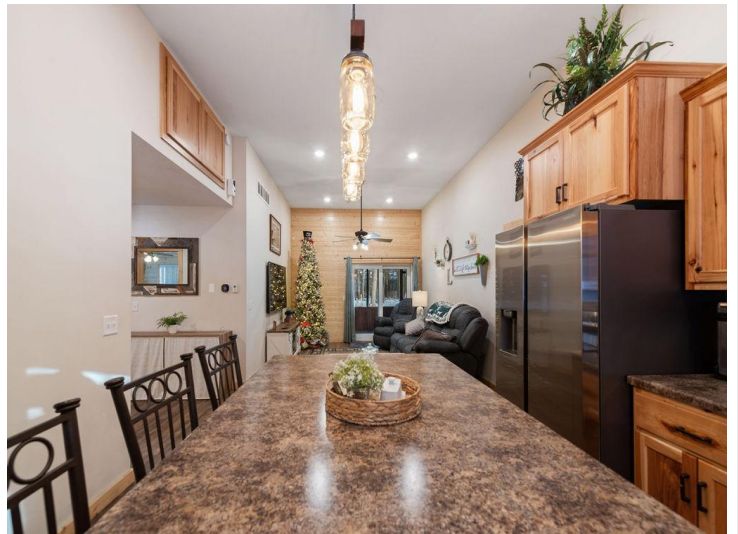


website: [www.AffinityRealEstate.com](http://www.AffinityRealEstate.com) | email: [info@affinityrealestate.com](mailto:info@affinityrealestate.com) | office: 218-237-3333 | fax: 218-237-3377

**Affinity**  
REAL ESTATE INC

**\$319,900**  
MLS 7015593 Residential  
3302 Telemark Trail  
Cushing MN 56443





website: [www.AffinityRealEstate.com](http://www.AffinityRealEstate.com) | email: [info@affinityrealestate.com](mailto:info@affinityrealestate.com) | office: 218-237-3333 | fax: 218-237-3377

**Affinity**  
REAL ESTATE INC

**\$319,900**  
MLS 7015593 Residential  
3302 Telemark Trail  
Cushing MN 56443





website: [www.AffinityRealEstate.com](http://www.AffinityRealEstate.com) | email: [info@affinityrealestate.com](mailto:info@affinityrealestate.com) | office: 218-237-3333 | fax: 218-237-3377

**Affinity**  
REAL ESTATE INC

**\$319,900**  
MLS 7015593 Residential  
3302 Telemark Trail  
Cushing MN 56443



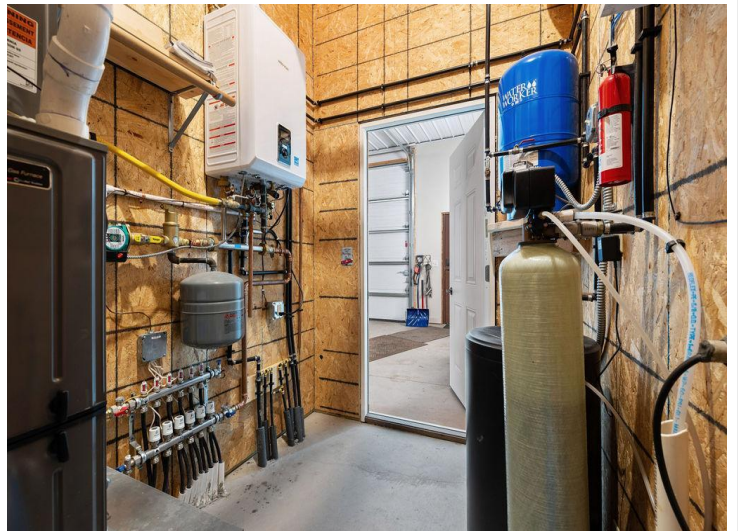


website: [www.AffinityRealEstate.com](http://www.AffinityRealEstate.com) | email: [info@affinityrealestate.com](mailto:info@affinityrealestate.com) | office: 218-237-3333 | fax: 218-237-3377

**Affinity**  
REAL ESTATE INC

**\$319,900**  
MLS 7015593 Residential  
3302 Telemark Trail  
Cushing MN 56443



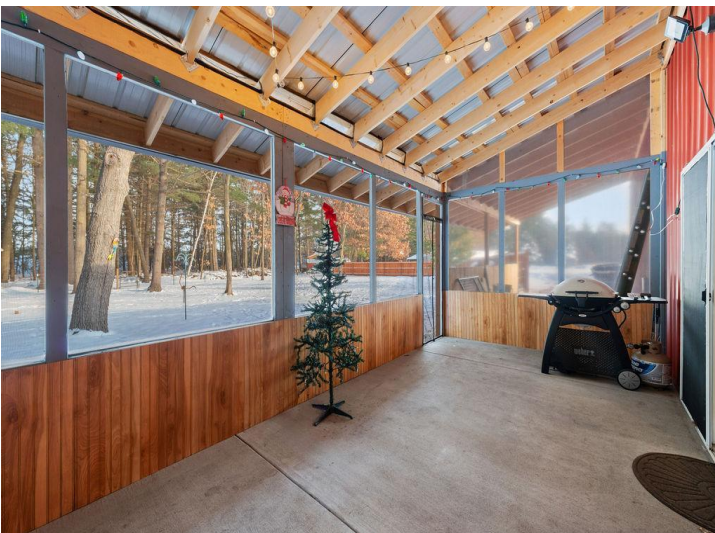
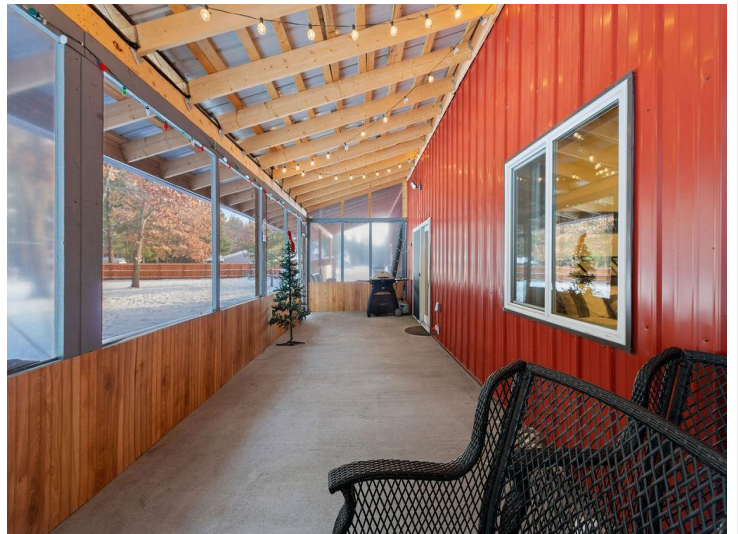


website: [www.AffinityRealEstate.com](http://www.AffinityRealEstate.com) | email: [info@affinityrealestate.com](mailto:info@affinityrealestate.com) | office: 218-237-3333 | fax: 218-237-3377

**Affinity**  
REAL ESTATE INC

**\$319,900**  
MLS 7015593 Residential  
3302 Telemark Trail  
Cushing MN 56443





website: [www.AffinityRealEstate.com](http://www.AffinityRealEstate.com) | email: [info@affinityrealestate.com](mailto:info@affinityrealestate.com) | office: 218-237-3333 | fax: 218-237-3377



**\$319,900**  
 MLS 7015593 Residential  
 3302 Telemark Trail  
 Cushing MN 56443





website: [www.AffinityRealEstate.com](http://www.AffinityRealEstate.com) | email: [info@affinityrealestate.com](mailto:info@affinityrealestate.com) | office: 218-237-3333 | fax: 218-237-3377



**\$319,900**  
 MLS 7015593 Residential  
 3302 Telemark Trail  
 Cushing MN 56443





website: [www.AffinityRealEstate.com](http://www.AffinityRealEstate.com) | email: [info@affinityrealestate.com](mailto:info@affinityrealestate.com) | office: 218-237-3333 | fax: 218-237-3377



**\$319,900**  
MLS 7015593 Residential  
3302 Telemark Trail  
Cushing MN 56443