



MLS 7015668 Land

**\$95,000**

2.02 Acres  
Raw Land

Lots 1 & 2 Mary Lane  
Brandon MN 56315

Status: Active

#### Description:

Here's your chance to own a scenic lot just across the road from the beautiful Lake Moses. This 2+ acre parcel features mature oak trees that offer natural shade and privacy, and the topography makes it ideal for a walk-out basement design.

Surrounded by peaceful agricultural fields and just minutes from Pine Ridge Golf Course, this location offers the best of rural Minnesota living—quiet, space, and proximity to recreation. Whether you're dreaming of a year-round residence or a weekend escape, this lot provides a stunning setting to bring your vision to life.

Don't miss out on this opportunity to own a piece of lakes country charm—reach out today for more info!

#### Additional Details:

Lot Acres	2.02
Lot Dimensions	240 x 310
School District	1316
Taxes	\$350
Taxes with Assessments	\$350
Tax Year	2025

#### Additional Features:

#### Driving Directions:

From Pine Ridge Golf Course, head north on County Rd. 16 NW, take a right on Mary Lane NW for about 1/2 mile, signs will be on right. Property is located on south side of lake.



Listed By:  
Century 21 Atwood

Affinity Real Estate Inc. participates in the Regional Multiple Listing Service of Minnesota, Inc Broker Reciprocity (sm) program, allowing us to display other broker's listings on our website. All properties are subject to prior sale, change or withdrawal.



Call Affinity Real Estate

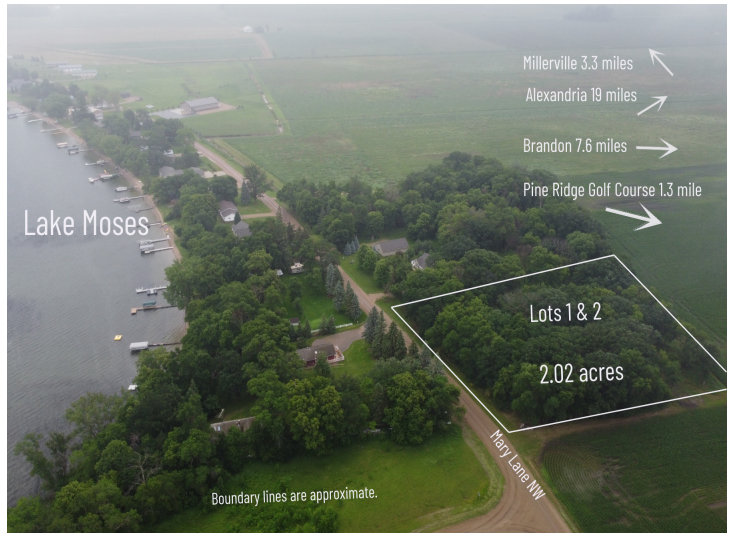
**218-237-3333**

[info@affinityrealestate.com](mailto:info@affinityrealestate.com)



Affinity Real Estate - 600 Park Avenue South - Park Rapids MN 56470





website: [www.AffinityRealEstate.com](http://www.AffinityRealEstate.com) | email: [info@affinityrealestate.com](mailto:info@affinityrealestate.com) | office: 218-237-3333 | fax: 218-237-3377



**\$95,000**  
 MLS 7015668 Land  
 Lots 1 & 2 Mary Lane  
 Brandon MN 56315





website: [www.AffinityRealEstate.com](http://www.AffinityRealEstate.com) | email: [info@affinityrealestate.com](mailto:info@affinityrealestate.com) | office: 218-237-3333 | fax: 218-237-3377



**\$95,000**  
MLS 7015668 Land  
Lots 1 & 2 Mary Lane  
Brandon MN 56315





website: [www.AffinityRealEstate.com](http://www.AffinityRealEstate.com) | email: [info@affinityrealestate.com](mailto:info@affinityrealestate.com) | office: 218-237-3333 | fax: 218-237-3377



**\$95,000**  
 MLS 7015668 Land  
 Lots 1 & 2 Mary Lane  
 Brandon MN 56315



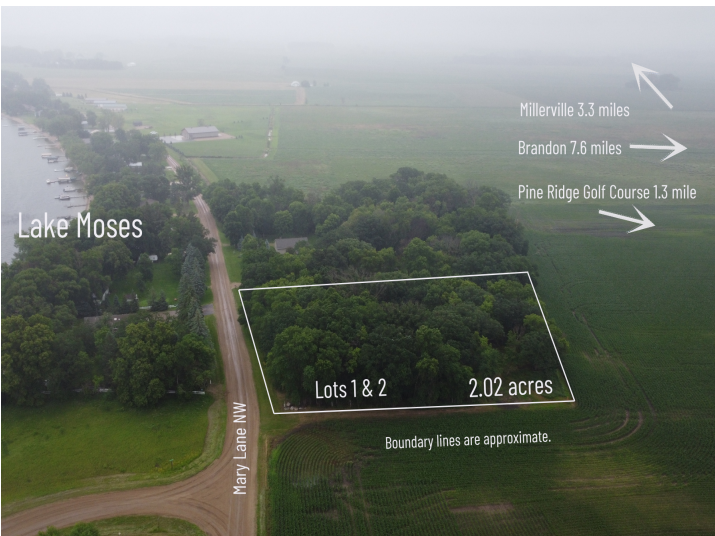


website: [www.AffinityRealEstate.com](http://www.AffinityRealEstate.com) | email: [info@affinityrealestate.com](mailto:info@affinityrealestate.com) | office: 218-237-3333 | fax: 218-237-3377



**\$95,000**  
MLS 7015668 Land  
Lots 1 & 2 Mary Lane  
Brandon MN 56315





website: [www.AffinityRealEstate.com](http://www.AffinityRealEstate.com) | email: [info@affinityrealestate.com](mailto:info@affinityrealestate.com) | office: 218-237-3333 | fax: 218-237-3377



**\$95,000**  
 MLS 7015668 Land  
 Lots 1 & 2 Mary Lane  
 Brandon MN 56315