



MLS 7016161 Residential

**\$403,790**

2,046 sq ft  
4 bedrooms  
2 baths

9251 Viking Street  
Brainerd MN 56401

Status: Active

**Description:**

\*\*\*Ready to Start\*\*\* Time to make your selections. This "Meadows" plan can be completed with 2-4 bedrooms, 1-2 baths, 2 or 3 stall garage with a lower level finished or left unfinished. There are multiple other homes at various phases of construction to tour. The MEADOWS plan features vaults, open space, walk in closets, custom cabinets, stainless appliances, large family room and more. This home is priced with a finished lower-level. All photos used are from other "Meadow" plans built by "Thomas Allen Homes". At Thomas Allen Homes, we believe that crafting your dream home should be a thrilling and seamless experience. Our commitment is to ensure your journey is not just stress-free but exciting. With a range of choice lots in prime locations, the perfect setting for your new home awaits. There's no need to wait for the right season—secure your spot now and embark on this incredible journey toward owning your dream home.

**Additional Details:**

Year Built	2026
Lot Acres	0.46
Lot Dimensions	75x289x89x246
Garage Stalls	2
School District	896
Taxes	\$246
Taxes with Assessments	\$246
Tax Year	2025

**Additional Features:**

**Fuel:** Array **Heat:** Forced Air

**Driving Directions:**

FROM Brainerd, North past Ice Arena on Riverside to left on Beaver Dam Rd to right on Northtown St to right on Warrior. FROM 371, East on Wise Rd (Cty 49) to Right on Beaver Dam Rd to left on Northtown St to right on Warrior.



Listed By:  
Edina Realty, Inc.

Affinity Real Estate Inc. participates in the Regional Multiple Listing Service of Minnesota, Inc Broker Reciprocity (sm) program, allowing us to display other broker's listings on our website. All properties are subject to prior sale, change or withdrawal.



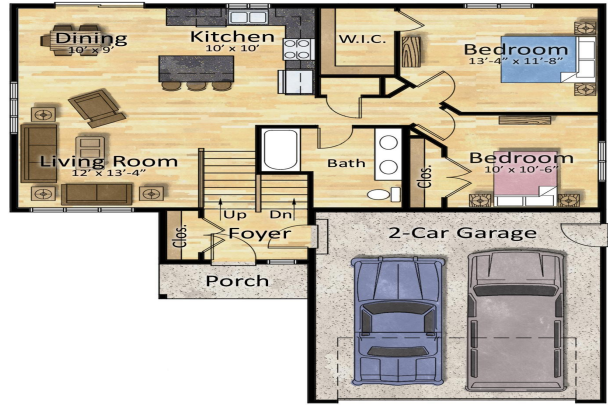
**Call Affinity Real Estate**

**218-237-3333**

**info@affinityrealestate.com**



**Affinity Real Estate - 600 Park Avenue South - Park Rapids MN 56470**



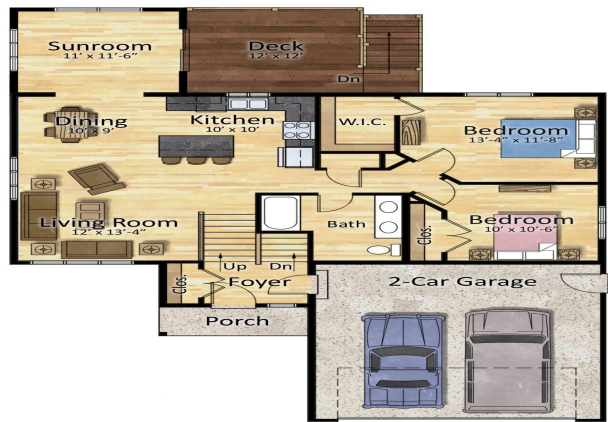
First Floor Plan

ResidentialRendering.com



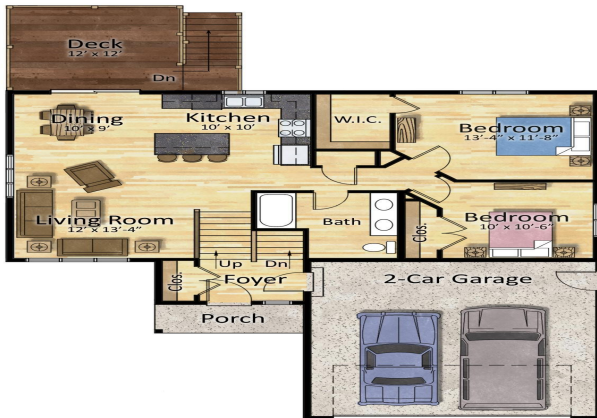
Lower Floor Plan

ResidentialRendering.com



First Floor Plan

ResidentialRendering.com



First Floor Plan

ResidentialRendering.com

website: [www.AffinityRealEstate.com](http://www.AffinityRealEstate.com) | email: [info@affinityrealestate.com](mailto:info@affinityrealestate.com) | office: 218-237-3333 | fax: 218-237-3377



**\$403,790**  
 MLS 7016161 Residential  
 9251 Viking Street  
 Brainerd MN 56401