



MLS 7016561 Residential

\$124,900

1,248 sq ft
4 bedrooms
1 baths

24033 Pine Avenue
Osage MN 56570

Status: Active

Description:

Welcome to this cozy 4 bedroom - 1 bath home located in the heart of Osage only 10 mins from Park Rapids and 30 from Detroit Lakes. With vintage charm and original hardwood floor in living/dining room, you can move right in and feel at home with potential to make it your own. Backyard is partially fenced in for young ones and pets with more room for extras. You don't want to miss out on this one of a kind home that keeps you living life in the lakes area with small town feel.

Additional Details:

Year Built	1915
Lot Acres	0.31
Lot Dimensions	50x200
School District	1384
Taxes	\$492
Taxes with Assessments	\$492
Tax Year	2025

Additional Features:

Basement: Partial **Fuel:** Array **Heat:** Boiler **Sewer:** Tank with Drainage Field **Water:** Well **Air Conditioning:** Central Air

Driving Directions:

Going west on Highway 34, take a right on Pine Ave and home is first house on right past grocery store.



Listed By:
Jack Chivers Realty

Affinity Real Estate Inc. participates in the Regional Multiple Listing Service of Minnesota, Inc Broker Reciprocity (sm) program, allowing us to display other broker's listings on our website. All properties are subject to prior sale, change or withdrawal.



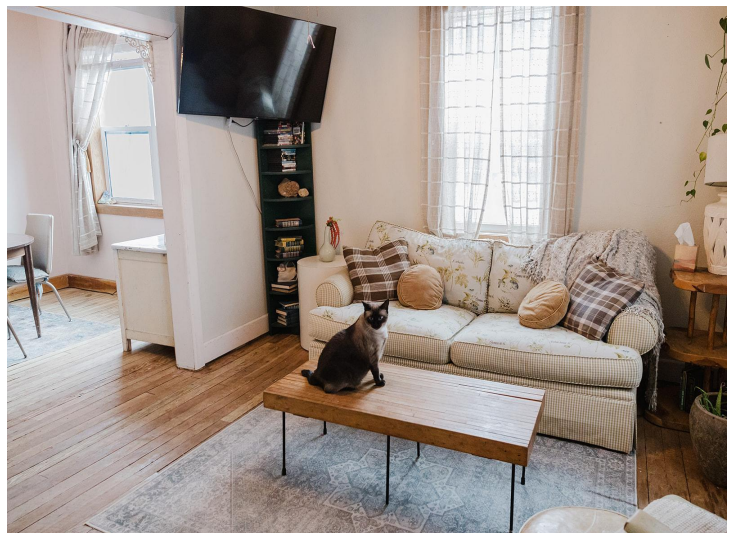
Call Affinity Real Estate

218-237-3333

info@affinityrealestate.com



Affinity Real Estate - 600 Park Avenue South - Park Rapids MN 56470



website: www.AffinityRealEstate.com | email: info@affinityrealestate.com | office: 218-237-3333 | fax:218-237-3377



\$124,900
MLS 7016561 Residential
24033 Pine Avenue
Osage MN 56570



website: www.AffinityRealEstate.com | email: info@affinityrealestate.com | office: 218-237-3333 | fax:218-237-3377

Affinity
REAL ESTATE INC

\$124,900
MLS 7016561 Residential
24033 Pine Avenue
Osage MN 56570



website: www.AffinityRealEstate.com | email: info@affinityrealestate.com | office: 218-237-3333 | fax:218-237-3377

Affinity
REAL ESTATE INC

\$124,900
MLS 7016561 Residential
24033 Pine Avenue
Osage MN 56570



website: www.AffinityRealEstate.com | email: info@affinityrealestate.com | office: 218-237-3333 | fax:218-237-3377

Affinity
REAL ESTATE INC

\$124,900
MLS 7016561 Residential
24033 Pine Avenue
Osage MN 56570