



3.96 Acres
316' Frontage on Boyer Lake



MLS 7016824 Land

\$150,000

3.96 Acres
Raw Land

17132 Boyer Lake Rd
Lake Park MN 56554

Status: Active

Description:

Don't miss this rare opportunity to own 3.98 acres and 315' of serene Lake shore on Boyer Lake, Located just off Highway 10 and only 10 minutes from Detroit Lakes, this spacious lot offers a perfect blend of open space and mature trees—ideal for building your dream home or lakeside getaway. Enjoy panoramic water views, peaceful surroundings, and excellent lake recreation all year long. A prime location with great accessibility and investment potential!

Additional Details:

Lot Acres	3.96
Lot Dimensions	686 x 316
School District	1299
Taxes	\$270
Taxes with Assessments	(unreported)
Tax Year	2025

Additional Features:

Driving Directions:

Head east on hwy 10 from lake park for one mile, turn left onto Boyer Lake Rd, property is first lot on your right.



Listed By:
HomeSmart Adventure Realty (DL)

Affinity Real Estate Inc. participates in the Regional Multiple Listing Service of Minnesota, Inc Broker Reciprocity (sm) program, allowing us to display other broker's listings on our website. All properties are subject to prior sale, change or withdrawal.



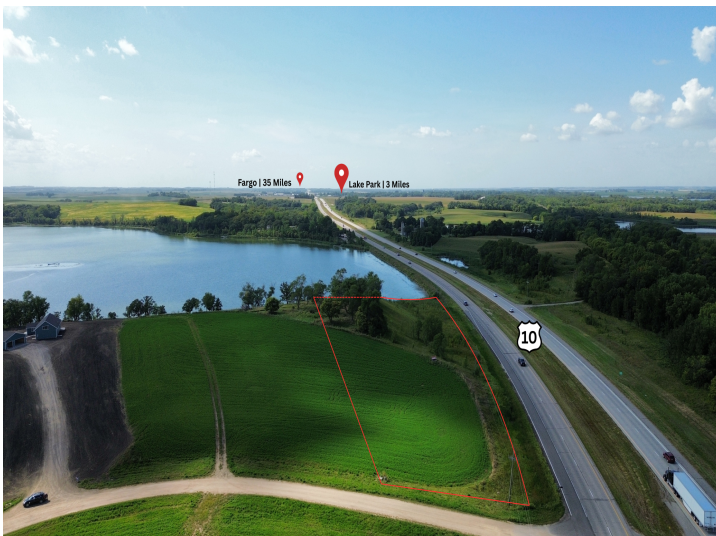
Call Affinity Real Estate

218-237-3333

info@affinityrealestate.com



Affinity Real Estate - 600 Park Avenue South - Park Rapids MN 56470



website: www.AffinityRealEstate.com | email: info@affinityrealestate.com | office: 218-237-3333 | fax: 218-237-3377



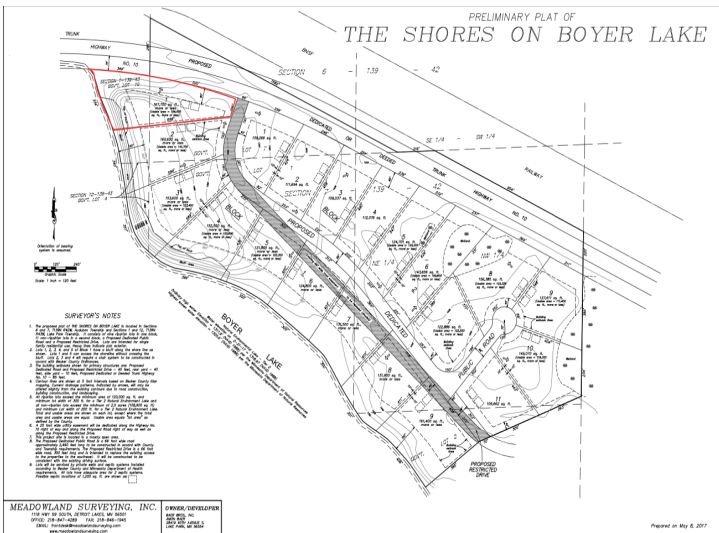
\$150,000
MLS 7016824 Land
17132 Boyer Lake Rd
Lake Park MN 56554



website: www.AffinityRealEstate.com | email: info@affinityrealestate.com | office: 218-237-3333 | fax: 218-237-3377

Affinity
REAL ESTATE INC

\$150,000
MLS 7016824 Land
17132 Boyer Lake Rd
Lake Park MN 56554



Page 4 of 4