



MLS 7016859 Land

**\$850,000**

132 Acres  
Raw Land

TBD Sunset Beach Road  
Bena MN 56626

Status: Active

**Description:**

A rare opportunity to own approximately 132 acres of vacant land on Leech Lake, one of Minnesota's most iconic and desirable lake destinations. This expansive property offers outstanding privacy and a true Northwoods setting, surrounded by mature woods, natural terrain, and abundant wildlife. The size and layout of the land provide exceptional recreational opportunities, whether for hunting, hiking, or simply enjoying the peace and quiet of northern Minnesota. Properties of this scale on Leech Lake are increasingly hard to find, making this an excellent option for a legacy property, private retreat, or long-term investment. This is a chance to secure a substantial piece of lake country in a location that continues to hold strong appeal and lasting value.

**Additional Details:**

Lot Acres	132
Lot Dimensions	1,494 x 3,696' x 2,325' x 1,482' x 1,785' x 3,168'
School District	703
Taxes	\$1,694
Taxes with Assessments	\$1,694
Tax Year	2026

**Additional Features:**

**Driving Directions:**

From Cass Lake Head East on HWY 2 for 15.6 miles, then head south of Portage Rd NE, continue south of Sunset Beach Rd NW for 4.3 miles. The property is North of New Leech Lake Campground with survey sticks in the ground.



Listed By:  
Real Broker, LLC

Affinity Real Estate Inc. participates in the Regional Multiple Listing Service of Minnesota, Inc Broker Reciprocity (sm) program, allowing us to display other broker's listings on our website. All properties are subject to prior sale, change or withdrawal.



**Call Affinity Real Estate**

**218-237-3333**

**info@affinityrealestate.com**



**Affinity Real Estate - 600 Park Avenue South - Park Rapids MN 56470**





website: [www.AffinityRealEstate.com](http://www.AffinityRealEstate.com) | email: [info@affinityrealestate.com](mailto:info@affinityrealestate.com) | office: 218-237-3333 | fax: 218-237-3377



**\$850,000**

MLS 7016859 Land  
TBD Sunset Beach Road  
Bena MN 56626





website: [www.AffinityRealEstate.com](http://www.AffinityRealEstate.com) | email: [info@affinityrealestate.com](mailto:info@affinityrealestate.com) | office: 218-237-3333 | fax: 218-237-3377



**\$850,000**

MLS 7016859 Land  
TBD Sunset Beach Road  
Bena MN 56626



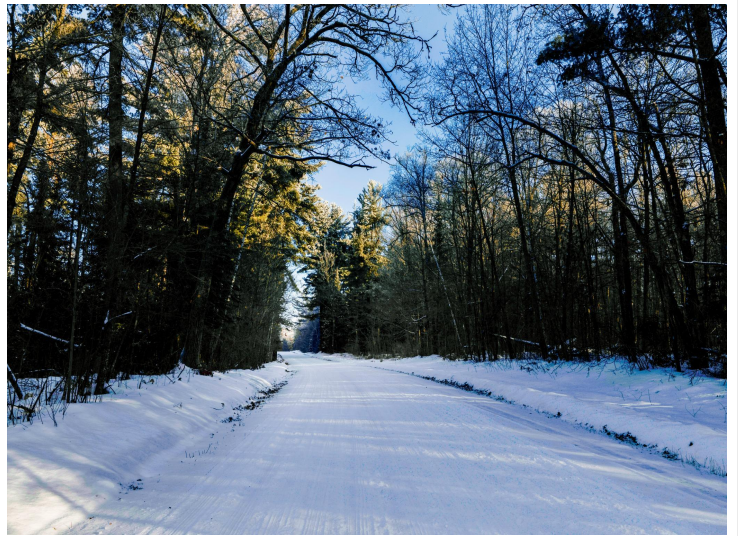


website: [www.AffinityRealEstate.com](http://www.AffinityRealEstate.com) | email: [info@affinityrealestate.com](mailto:info@affinityrealestate.com) | office: 218-237-3333 | fax: 218-237-3377



**\$850,000**  
 MLS 7016859 Land  
 TBD Sunset Beach Road  
 Bena MN 56626





website: [www.AffinityRealEstate.com](http://www.AffinityRealEstate.com) | email: [info@affinityrealestate.com](mailto:info@affinityrealestate.com) | office: 218-237-3333 | fax: 218-237-3377



**\$850,000**

MLS 7016859 Land  
TBD Sunset Beach Road  
Bena MN 56626