



MLS 7016885 Residential

\$625,000

3,980 sq ft
4 bedrooms
3 baths

330 Birchwood Road
Alexandria MN 56308

Status: Active

Description:

This stunning log home boasts of curb appeal and will warm your heart to your soul with it's authentic ambience . This home has a hand-crafted larch full log with winter cambium peel interior, that features a vaulted ceiling, lofted primary suite with private balcony, log staircases, loft overlooking a Mendota stone fireplace. The customization don't stop there... It comes with a custom kitchen remodeled in 2018- complete with custom cabinets, pullouts, organizers, bar sink, Manhattan Gold Granite with a leathered finish. The main floor features a dining room, that could transition to a main floor office or bedroom. The loft features the primary suite, loft and bonus flex area. This area comes with an office and a blank canvas to create a home studio, perhaps a salon or a mother in-law's suite. It is equipped with a kitchenette, seating area, office/bedroom and a bonus room that could be a rec room, bonus room for the kids or in-home theatre. The basement is finished with 3 more bedrooms, family room, bathroom and walk-in tile shower and walkout basement patio. Whether you are looking to move the whole family. Thinking of doing daycare or need an in-law suite or home business, this may just be the place. Tucked in a grove of mature trees, and equipped with a heated three stall garage this show stopper is sure to please, with room for some personalization. This home is something you truly need to come see to appreciate!

Additional Details:

Year Built	1988
Lot Acres	0.71
Lot Dimensions	153,202,153,198
Garage Stalls	3
School District	1015
Taxes	\$3,502
Taxes with Assessments	\$3,502
Tax Year	2025

Additional Features:

Fuel: Array **Heat:** Boiler, Forced Air, In-Floor Heating

Driving Directions:

Head North on 29 in Alex, turn left on County Rd 42 NE/Glacial Ridge Trail/N Nokomis Street. Continue straight on County Hwy 11 and 34. Turn right onto County Road 11 NW, turn left on Birchwood Rd N to reach the lot.



Listed By:
Real Estate by Jo, LLC

Affinity Real Estate Inc. participates in the Regional Multiple Listing Service of Minnesota, Inc Broker Reciprocity (sm) program, allowing us to display other broker's listings on our website. All properties are subject to prior sale, change or withdrawal.



Call **Affinity Real Estate**

218-237-3333

info@affinityrealestate.com



Affinity Real Estate - 600 Park Avenue South - Park Rapids MN 56470



website: www.AffinityRealEstate.com | email: info@affinityrealestate.com | office: 218-237-3333 | fax: 218-237-3377

Affinity
REAL ESTATE INC

\$625,000
MLS 7016885 Residential
330 Birchwood Road
Alexandria MN 56308



website: www.AffinityRealEstate.com | email: info@affinityrealestate.com | office: 218-237-3333 | fax: 218-237-3377



\$625,000
 MLS 7016885 Residential
 330 Birchwood Road
 Alexandria MN 56308



website: www.AffinityRealEstate.com | email: info@affinityrealestate.com | office: 218-237-3333 | fax: 218-237-3377

Affinity
REAL ESTATE INC

\$625,000
MLS 7016885 Residential
330 Birchwood Road
Alexandria MN 56308



website: www.AffinityRealEstate.com | email: info@affinityrealestate.com | office: 218-237-3333 | fax: 218-237-3377

Affinity
REAL ESTATE INC

\$625,000
MLS 7016885 Residential
330 Birchwood Road
Alexandria MN 56308



website: www.AffinityRealEstate.com | email: info@affinityrealestate.com | office: 218-237-3333 | fax: 218-237-3377

Affinity
REAL ESTATE INC

\$625,000
MLS 7016885 Residential
330 Birchwood Road
Alexandria MN 56308



website: www.AffinityRealEstate.com | email: info@affinityrealestate.com | office: 218-237-3333 | fax: 218-237-3377

Affinity
REAL ESTATE INC

\$625,000
MLS 7016885 Residential
330 Birchwood Road
Alexandria MN 56308



website: www.AffinityRealEstate.com | email: info@affinityrealestate.com | office: 218-237-3333 | fax: 218-237-3377



\$625,000
 MLS 7016885 Residential
 330 Birchwood Road
 Alexandria MN 56308



website: www.AffinityRealEstate.com | email: info@affinityrealestate.com | office: 218-237-3333 | fax: 218-237-3377



\$625,000
 MLS 7016885 Residential
 330 Birchwood Road
 Alexandria MN 56308



website: www.AffinityRealEstate.com | email: info@affinityrealestate.com | office: 218-237-3333 | fax: 218-237-3377



\$625,000
 MLS 7016885 Residential
 330 Birchwood Road
 Alexandria MN 56308



website: www.AffinityRealEstate.com | email: info@affinityrealestate.com | office: 218-237-3333 | fax: 218-237-3377



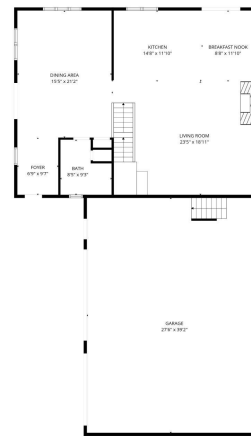
\$625,000
 MLS 7016885 Residential
 330 Birchwood Road
 Alexandria MN 56308



website: www.AffinityRealEstate.com | email: info@affinityrealestate.com | office: 218-237-3333 | fax: 218-237-3377



\$625,000
 MLS 7016885 Residential
 330 Birchwood Road
 Alexandria MN 56308

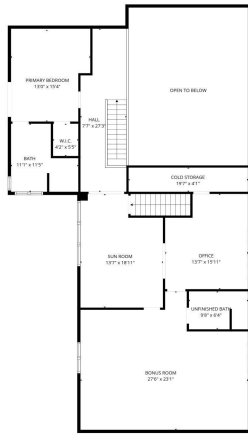


TOTAL: 3874 sq. ft.
 Basement 1: 1161 sq. ft., 1st floor: 1155 sq. ft., 2nd floor: 1518 sq. ft.
 EXCLUDED AREAS: UTILITY: 35 sq. ft., GARAGE: 1077 sq. ft., FULLBATH: 62 sq. ft.,
 COLD STORAGE: 86 sq. ft., OPEN TO BELOW: 516 sq. ft., LOW CEILING: 37 sq. ft.,
 WALLS: 305 sq. ft.

website: www.AffinityRealEstate.com | email: info@affinityrealestate.com | office: 218-237-3333 | fax: 218-237-3377

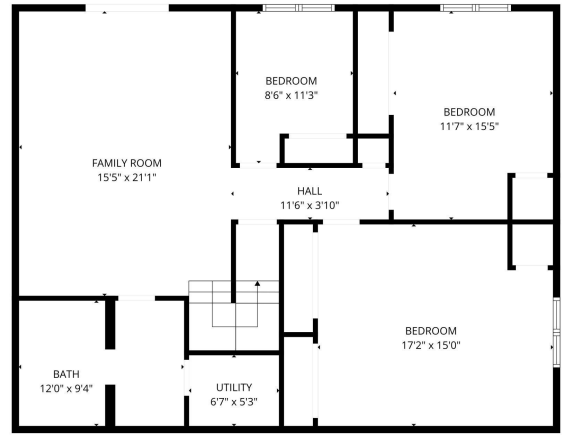


\$625,000
 MLS 7016885 Residential
 330 Birchwood Road
 Alexandria MN 56308



TOTAL: 3874 sq. ft.
 Basement 1: 1161 sq. ft., 1st floor: 1195 sq. ft., 2nd floor: 1518 sq. ft.
 EXCLUDED AREAS: UTILITY: 35 sq. ft., GARAGE: 1077 sq. ft., FULLBATH: 62 sq. ft.,
 COLD STORAGE: 86 sq. ft., OPEN TO BELOW: 516 sq. ft., LOW CEILING: 37 sq. ft.,
 WALLS: 305 sq. ft.

FLOOR PLANS CREATED BY COLUMBIA AND ASSOCIATES/REPRESENTED BY AFFINITY REAL ESTATE INC. BUT NOT GUARANTEED



TOTAL: 3874 sq. ft.
 Basement 1: 1161 sq. ft., 1st floor: 1195 sq. ft., 2nd floor: 1518 sq. ft.
 EXCLUDED AREAS: UTILITY: 35 sq. ft., GARAGE: 1077 sq. ft., FULLBATH: 62 sq. ft.,
 COLD STORAGE: 86 sq. ft., OPEN TO BELOW: 516 sq. ft., LOW CEILING: 37 sq. ft.,
 WALLS: 305 sq. ft.

FLOOR PLANS CREATED BY COLUMBIA AND ASSOCIATES/REPRESENTED BY AFFINITY REAL ESTATE INC. BUT NOT GUARANTEED



TOTAL: 3874 sq. ft.
 Basement 1: 1161 sq. ft., 1st floor: 1195 sq. ft., 2nd floor: 1518 sq. ft.
 EXCLUDED AREAS: UTILITY: 35 sq. ft., GARAGE: 1077 sq. ft., FULLBATH: 62 sq. ft.,
 COLD STORAGE: 86 sq. ft., OPEN TO BELOW: 516 sq. ft., LOW CEILING: 37 sq. ft.,
 WALLS: 305 sq. ft.

FLOOR PLANS CREATED BY COLUMBIA AND ASSOCIATES/REPRESENTED BY AFFINITY REAL ESTATE INC. BUT NOT GUARANTEED

website: www.AffinityRealEstate.com | email: info@affinityrealestate.com | office: 218-237-3333 | fax: 218-237-3377



\$625,000
 MLS 7016885 Residential
 330 Birchwood Road
 Alexandria MN 56308