



MLS 7017220 Land

**\$379,000**

133.93 Acres  
Raw Land

TBD Plantangenet Road  
Bemidji MN 56601

Status: Active

**Description:**

133.93 acres Now available! Very nice wooded land at a great location, not far off Hwy 2 west. Come see in person this beautiful piece of property.

**Additional Details:**

Lot Acres	133.93
Lot Dimensions	1307x2585
School District	31
Taxes	\$1,267
Taxes with Assessments	\$1,267
Tax Year	2025

**Additional Features:**

**Driving Directions:**

From downtown Bemidji take Bemidji Ave S, keep left onto US Hwy 2. Take US Hwy 2 approximately 4 miles to N Plantangenet Rd SE. Right on N Plantangenet Rd (aka Beltrami Line Rd). Property will be on your right (north side of Plantangenet Rd).



Listed By:  
Better Homes and Gardens Real Estate First Cho

Affinity Real Estate Inc. participates in the Regional Multiple Listing Service of Minnesota, Inc Broker Reciprocity (sm) program, allowing us to display other broker's listings on our website. All properties are subject to prior sale, change or withdrawal.



Call Affinity Real Estate

**218-237-3333**

[info@affinityrealestate.com](mailto:info@affinityrealestate.com)



Affinity Real Estate - 600 Park Avenue South - Park Rapids MN 56470



website: [www.AffinityRealEstate.com](http://www.AffinityRealEstate.com) | email: [info@affinityrealestate.com](mailto:info@affinityrealestate.com) | office: 218-237-3333 | fax:218-237-3377



**\$379,000**  
MLS 7017220 Land  
TBD Plantangenet Road  
Bemidji MN 56601



website: [www.AffinityRealEstate.com](http://www.AffinityRealEstate.com) | email: [info@affinityrealestate.com](mailto:info@affinityrealestate.com) | office: 218-237-3333 | fax:218-237-3377



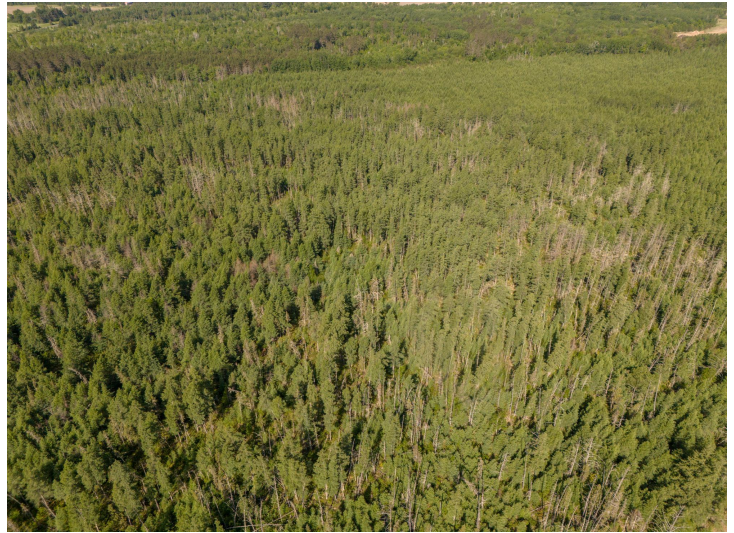
**\$379,000**  
MLS 7017220 Land  
TBD Plantangenet Road  
Bemidji MN 56601



website: [www.AffinityRealEstate.com](http://www.AffinityRealEstate.com) | email: [info@affinityrealestate.com](mailto:info@affinityrealestate.com) | office: 218-237-3333 | fax:218-237-3377



**\$379,000**  
MLS 7017220 Land  
TBD Plantangenet Road  
Bemidji MN 56601



website: [www.AffinityRealEstate.com](http://www.AffinityRealEstate.com) | email: [info@affinityrealestate.com](mailto:info@affinityrealestate.com) | office: 218-237-3333 | fax:218-237-3377



**\$379,000**  
MLS 7017220 Land  
TBD Plantangenet Road  
Bemidji MN 56601



website: [www.AffinityRealEstate.com](http://www.AffinityRealEstate.com) | email: [info@affinityrealestate.com](mailto:info@affinityrealestate.com) | office: 218-237-3333 | fax:218-237-3377



**\$379,000**  
MLS 7017220 Land  
TBD Plantangenet Road  
Bemidji MN 56601



website: [www.AffinityRealEstate.com](http://www.AffinityRealEstate.com) | email: [info@affinityrealestate.com](mailto:info@affinityrealestate.com) | office: 218-237-3333 | fax:218-237-3377



**\$379,000**  
MLS 7017220 Land  
TBD Plantangenet Road  
Bemidji MN 56601