



MLS 7017259 Land

\$219,000

0.7 Acres
Rough Grade

11284 County Highway 17
Detroit Lakes MN 56501

Status: Active

Description:

High visibility lot on CO Hwy 17 located just off US HWY 59 S in Detroit Lakes. Previous commercial structures have been removed. Lot is currently Zoned Ag but could be re-zoned commercial. Property includes survey, fencing, well and approach. Great location for shop, display lot or water craft and accessory staging.

Additional Details:

Lot Acres	0.7
Lot Dimensions	275x120
School District	1074
Taxes	\$674
Taxes with Assessments	\$886
Tax Year	2025

Additional Features:

Driving Directions:

From Detroit Lakes take US HWY 59 South 3.7 miles to CH-17, take right and follow 1.7 miles to property.



Listed By:
REMAX Lakes Region

Affinity Real Estate Inc. participates in the Regional Multiple Listing Service of Minnesota, Inc Broker Reciprocity (sm) program, allowing us to display other broker's listings on our website. All properties are subject to prior sale, change or withdrawal.



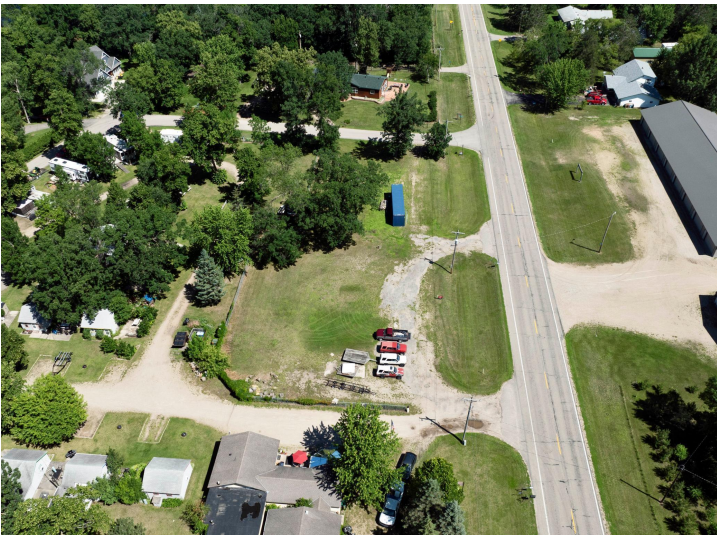
Call Affinity Real Estate

218-237-3333

info@affinityrealestate.com



Affinity Real Estate - 600 Park Avenue South - Park Rapids MN 56470



website: www.AffinityRealEstate.com | email: info@affinityrealestate.com | office: 218-237-3333 | fax: 218-237-3377

Affinity
REAL ESTATE INC

\$219,000
MLS 7017259 Land
11284 County Highway 17
Detroit Lakes MN 56501