



MLS 7017352 Residential

**\$950,000**

1,288 sq ft  
3 bedrooms  
2 baths

23853 County Highway 22  
Detroit Lakes MN 56501

Status: Pending

**Description:**

Lake Melissa- Year-Round Home. Enjoy this wonderful 3 Bedroom, 2 Bath home that has been nicely updated with Newer LVP flooring, Stone Accent Gas Fireplace, Stainless Steel Appliances, Vaulted ceilings in the kitchen and living open to the amazing Sunroom with a full wall of windows with sliding doors that open to the Lakeside maintenance free deck only feet from the water's edge. Wonderful landscaping with rocks and a variety of plants accentuate this beautiful property. And let's not forget this sits on a level 66' lot with hard sand bottom with South facing views so you can enjoy the Sunset and Sunrise. Seize this rare opportunity own a year-round property on the North Shore of Lake Melissa.

**Additional Details:**

Year Built	1981
Lot Acres	0.26
Lot Dimensions	66
Garage Stalls	1
School District	1074
Taxes	\$5,088
Taxes with Assessments	\$5,088
Tax Year	2025

**Additional Features:**

**Basement:** Crawl Space **Fuel:** Array **Garage:** 1 **Heat:** Forced Air **Sewer:** Holding Tank **Water:** Drilled, Well **Air Conditioning:** Central Air

**Driving Directions:**

Take HWY 59 south from Detroit Lakes, turn right onto County Hwy 22, follow past the hotel Shoreham about 1/4 mile property on your left.



Listed By:  
HomeSmart Adventure Realty (DL)

Affinity Real Estate Inc. participates in the Regional Multiple Listing Service of Minnesota, Inc Broker Reciprocity (sm) program, allowing us to display other broker's listings on our website. All properties are subject to prior sale, change or withdrawal.



**Call Affinity Real Estate**

**218-237-3333**

**info@affinityrealestate.com**



**Affinity Real Estate - 600 Park Avenue South - Park Rapids MN 56470**



website: [www.AffinityRealEstate.com](http://www.AffinityRealEstate.com) | email: [info@affinityrealestate.com](mailto:info@affinityrealestate.com) | office: 218-237-3333 | fax:218-237-3377



**\$950,000**  
MLS 7017352 Residential  
23853 County Highway 22  
Detroit Lakes MN 56501



website: [www.AffinityRealEstate.com](http://www.AffinityRealEstate.com) | email: [info@affinityrealestate.com](mailto:info@affinityrealestate.com) | office: 218-237-3333 | fax:218-237-3377

**Affinity**  
REAL ESTATE INC

**\$950,000**  
MLS 7017352 Residential  
23853 County Highway 22  
Detroit Lakes MN 56501



website: [www.AffinityRealEstate.com](http://www.AffinityRealEstate.com) | email: [info@affinityrealestate.com](mailto:info@affinityrealestate.com) | office: 218-237-3333 | fax: 218-237-3377

**Affinity**  
REAL ESTATE INC

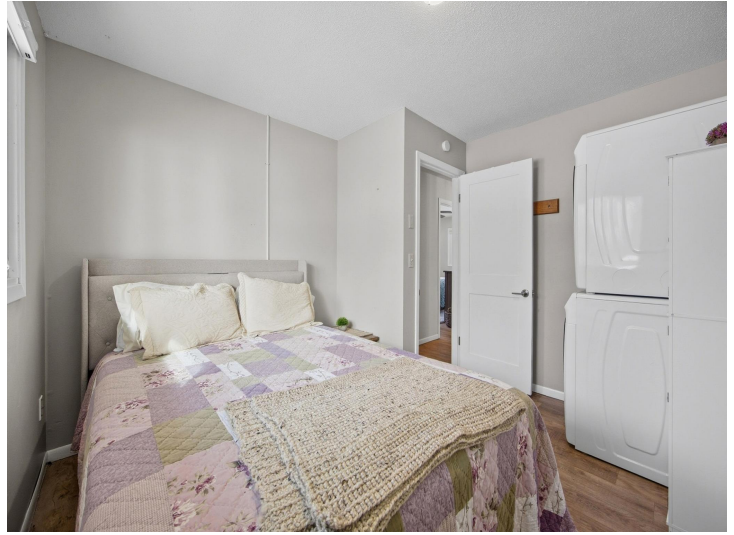
**\$950,000**  
MLS 7017352 Residential  
23853 County Highway 22  
Detroit Lakes MN 56501



website: [www.AffinityRealEstate.com](http://www.AffinityRealEstate.com) | email: [info@affinityrealestate.com](mailto:info@affinityrealestate.com) | office: 218-237-3333 | fax: 218-237-3377

**Affinity**  
REAL ESTATE INC

**\$950,000**  
MLS 7017352 Residential  
23853 County Highway 22  
Detroit Lakes MN 56501



website: [www.AffinityRealEstate.com](http://www.AffinityRealEstate.com) | email: [info@affinityrealestate.com](mailto:info@affinityrealestate.com) | office: 218-237-3333 | fax:218-237-3377



**\$950,000**  
MLS 7017352 Residential  
23853 County Highway 22  
Detroit Lakes MN 56501



website: [www.AffinityRealEstate.com](http://www.AffinityRealEstate.com) | email: [info@affinityrealestate.com](mailto:info@affinityrealestate.com) | office: 218-237-3333 | fax:218-237-3377

**Affinity**  
REAL ESTATE INC

**\$950,000**  
MLS 7017352 Residential  
23853 County Highway 22  
Detroit Lakes MN 56501



website: [www.AffinityRealEstate.com](http://www.AffinityRealEstate.com) | email: [info@affinityrealestate.com](mailto:info@affinityrealestate.com) | office: 218-237-3333 | fax:218-237-3377



**\$950,000**  
MLS 7017352 Residential  
23853 County Highway 22  
Detroit Lakes MN 56501