



MLS 7017534 Residential

\$479,000

1,594 sq ft
3 bedrooms
2 baths

5875 Red Leaf Court
Nisswa MN 56468

Status: Active

Description:

Welcome to your new home in Pine Trails of Nisswa! Presenting the "Executive" model, a harmonious blend of comfort and elegance all on one level. This exquisite home features 3 Bedrooms, 2 Bathrooms available features include: A cozy fireplace and a convenient 3-stall garage and a range of single-family home options. Not the plan for you? Choose from split-level, one-level, 3-level split, and our latest 2-story plans, all meticulously designed to suit your lifestyle. At Thomas Allen Homes, we believe in customization. Select your finishes, colors, and options to curate a home that mirrors your unique style. From the flooring to the fixtures, make it truly yours. A Seamless Experience: Building your dream home should be thrilling, not stressful. We take pride in ensuring your journey is exciting, seamless. Take your pick from a variety of choice lots in prime locations. Secure your spot now and embark on this incredible journey with Thomas Allen Homes.

Additional Details:

Year Built	2026
Lot Acres	0.27
Lot Dimensions	irr
Garage Stalls	2
School District	896
Taxes	\$548
Taxes with Assessments	\$548
Tax Year	2025

Additional Features:

Basement: None **Fuel:** Array **Garage:** 2 **Heat:** Forced Air **Sewer:** City Sewer/Connected **Water:** Private **Air Conditioning:** Central Air

Driving Directions:

FROM Brainerd, North on 371 to Cty Rd 18 (lights south end of Downtown), turn right, straight through round-about 2 blocks to Community on right.



Listed By:
Edina Realty, Inc.

Affinity Real Estate Inc. participates in the Regional Multiple Listing Service of Minnesota, Inc Broker Reciprocity (sm) program, allowing us to display other broker's listings on our website. All properties are subject to prior sale, change or withdrawal.



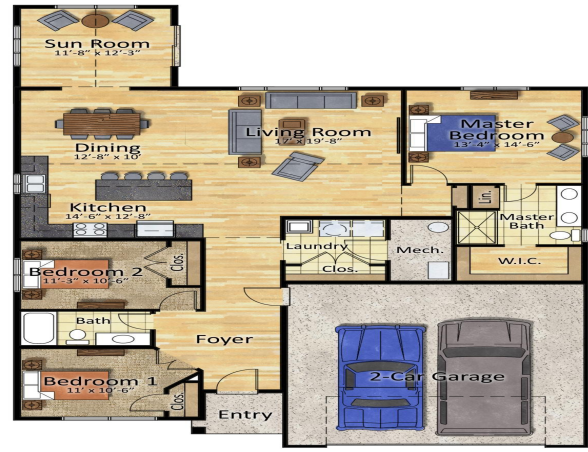
Call Affinity Real Estate

218-237-3333

info@affinityrealestate.com



Affinity Real Estate - 600 Park Avenue South - Park Rapids MN 56470



Floor Plan



website: www.AffinityRealEstate.com | email: info@affinityrealestate.com | office: 218-237-3333 | fax: 218-237-3377

Affinity
REAL ESTATE INC

\$479,000
MLS 7017534 Residential
5875 Red Leaf Court
Nisswa MN 56468



website: www.AffinityRealEstate.com | email: info@affinityrealestate.com | office: 218-237-3333 | fax: 218-237-3377

Affinity
REAL ESTATE INC

\$479,000
MLS 7017534 Residential
5875 Red Leaf Court
Nisswa MN 56468



website: www.AffinityRealEstate.com | email: info@affinityrealestate.com | office: 218-237-3333 | fax: 218-237-3377

Affinity
REAL ESTATE INC

\$479,000
MLS 7017534 Residential
5875 Red Leaf Court
Nisswa MN 56468



website: www.AffinityRealEstate.com | email: info@affinityrealestate.com | office: 218-237-3333 | fax: 218-237-3377

Affinity
REAL ESTATE INC

\$479,000
MLS 7017534 Residential
5875 Red Leaf Court
Nisswa MN 56468