



MLS 7017553 Residential

\$374,000

1,456 sq ft
3 bedrooms
2 baths

33798 Twin Oaks Trail
Motley MN 56466

Status: Active

Description:

Tucked away at the end of a quiet cul-de-sac, this private woodland sanctuary offers the perfect blend of modern comfort and natural beauty. This one-level, 3-bedroom, 2-bath ranch-style home is traditionally stick-built and sits on 2.9± secluded acres, providing peaceful privacy in a truly extraordinary setting! Step inside to discover in-floor radiant heat, an inviting open-concept layout, and a kitchen designed for gathering. Soft-close cabinetry, stainless steel appliances with smartphone connectivity, and USB charging throughout the home reflect the thoughtful attention to detail. Work from home with fiber-optic internet—all while enjoying the array of wildlife right outside your windows. The spacious primary suite features a wheelchair-accessible en-suite bath, and main-floor laundry ensures effortless one-level living. A whole-home water filtration system, newly installed reverse osmosis drinking water system, and mini-split heating and cooling will keep you comfortable year-round with the option of connecting to natural gas as well. The heated 2+ car garage is fully finished with insulation, in-floor heat, a work bench, and generous storage space. Step outside and experience something truly special! This property is a National Wildlife Federation Certified Wildlife Habitat, showcasing a living landscape with over 68 perennial varieties, 14 types of pine, cherry, and apple trees, red and black currants, and beautiful Lake Superior stone accents. Relax beneath the gazebo, wander the private walking trails, or pause at handcrafted benches along the way. Wildlife sightings are abundant—deer, turkeys, birds, and butterflies are frequent visitors. Thoughtfully equipped for both security and nature lovers, the home includes six cameras that stay with the property—ideal for monitoring the grounds and enjoying wildlife activity around the clock. Motion-activated solar lights illuminate the driveway and key areas, enhancing visibility, safety, and nighttime wildlife viewing. The love and time spent creating this private wildlife sanctuary is unreal! Adventure awaits just beyond your doorstep with hundreds of miles of ATV, snowmobile, and cross-country ski trails, downhill skiing on Mt Ski Gull, numerous nearby lakes, the Crow Wing River for fishing and tubing, and local state land for excellent hunting. As a bonus, the sellers are including a Husqvarna riding lawnmower with leaf bag system, the outdoor swing, gazebo, fire pit, and two Honeywell Air Purifiers. If your dream is to escape to a quieter place with no HOA while still being close to modern amenities and endless recreation, this remarkable property truly checks all the boxes!

Additional Details:

Year Built 2022
Lot Acres 2.9
Lot Dimensions 384x330x308x415

Garage Stalls 2

Listed By: 170
Whitetail Properties Real Estate
Taxes \$2,454
Affinity Real Estate Inc. participates in the Regional Multiple Listing Service of Minnesota, Inc. Broker Reciprocity (sm) program, allowing us to display other broker's listings on our website. All properties are subject to prior sale, change or withdrawal.
Tax Year 2025

Additional Features:

Fuel: Propane Heat: Boiler, Ductless Mini-Split, In-Floor Heating, Zoned



Call Affinity Real Estate

218-237-3333

info@affinityrealestate.com



Affinity Real Estate - 600 Park Avenue South - Park Rapids MN 56470

Driving Directions:



website: www.AffinityRealEstate.com | email: info@affinityrealestate.com | office: 218-237-3333 | fax:218-237-3377

Affinity
REAL ESTATE INC

\$374,000
MLS 7017553 Residential
33798 Twin Oaks Trail
Motley MN 56466



website: www.AffinityRealEstate.com | email: info@affinityrealestate.com | office: 218-237-3333 | fax:218-237-3377

Affinity
REAL ESTATE INC

\$374,000
MLS 7017553 Residential
33798 Twin Oaks Trail
Motley MN 56466



website: www.AffinityRealEstate.com | email: info@affinityrealestate.com | office: 218-237-3333 | fax:218-237-3377



\$374,000
MLS 7017553 Residential
33798 Twin Oaks Trail
Motley MN 56466



website: www.AffinityRealEstate.com | email: info@affinityrealestate.com | office: 218-237-3333 | fax: 218-237-3377

Affinity
REAL ESTATE INC

\$374,000
MLS 7017553 Residential
33798 Twin Oaks Trail
Motley MN 56466



website: www.AffinityRealEstate.com | email: info@affinityrealestate.com | office: 218-237-3333 | fax:218-237-3377



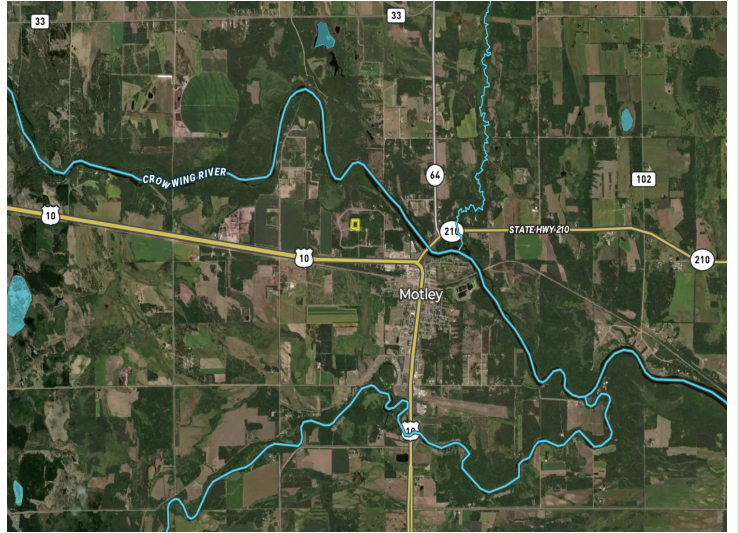
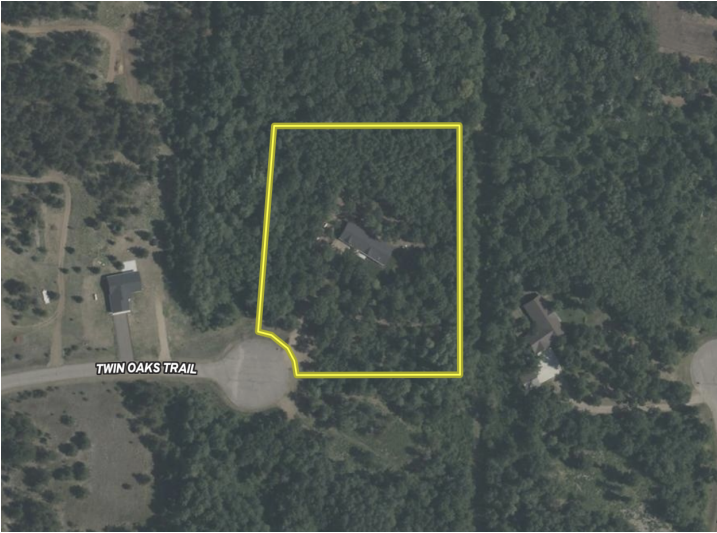
\$374,000
MLS 7017553 Residential
33798 Twin Oaks Trail
Motley MN 56466



website: www.AffinityRealEstate.com | email: info@affinityrealestate.com | office: 218-237-3333 | fax: 218-237-3377

Affinity
REAL ESTATE INC

\$374,000
MLS 7017553 Residential
33798 Twin Oaks Trail
Motley MN 56466



website: www.AffinityRealEstate.com | email: info@affinityrealestate.com | office: 218-237-3333 | fax:218-237-3377



\$374,000
MLS 7017553 Residential
33798 Twin Oaks Trail
Motley MN 56466

website: www.AffinityRealEstate.com | email: info@affinityrealestate.com | office: 218-237-3333 | fax:218-237-3377



\$374,000
MLS 7017553 Residential
33798 Twin Oaks Trail
Motley MN 56466