

MLS 7017799 Land

**\$75,000**

1.84 Acres  
Subdivided

TBD 350th Ave  
Battle Lake MN 56515

Status: Active

**Description:**

Prime 1.84 acre lot near Otter Tail Lake and Brown Lake. Great location to build storage units.

**Additional Details:**

Lot Acres	1.84
Lot Dimensions	irregular
School District	1941
Taxes	\$284
Taxes with Assessments	\$284
Tax Year	2025

**Additional Features:**

**Driving Directions:**

From county Hwy 1 take 350th Ave



Listed By:  
FpG Realty

Affinity Real Estate Inc. participates in the Regional Multiple Listing Service of Minnesota, Inc Broker Reciprocity (sm) program, allowing us to display other broker's listings on our website. All properties are subject to prior sale, change or withdrawal.



Call Affinity Real Estate

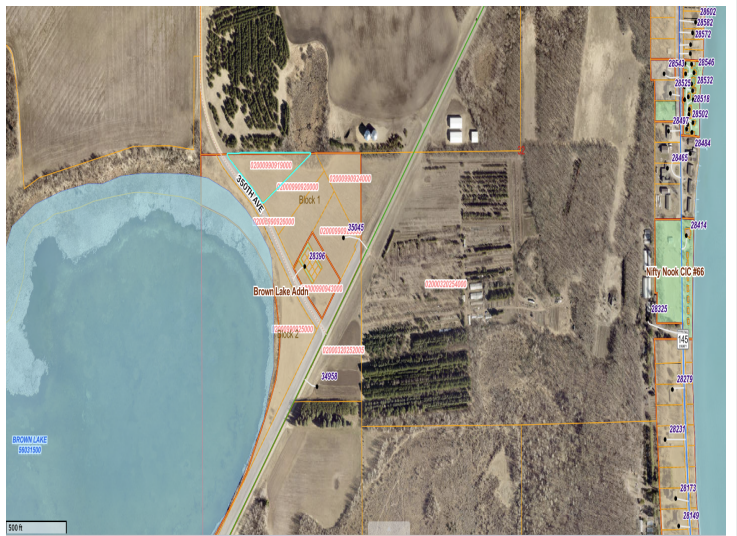
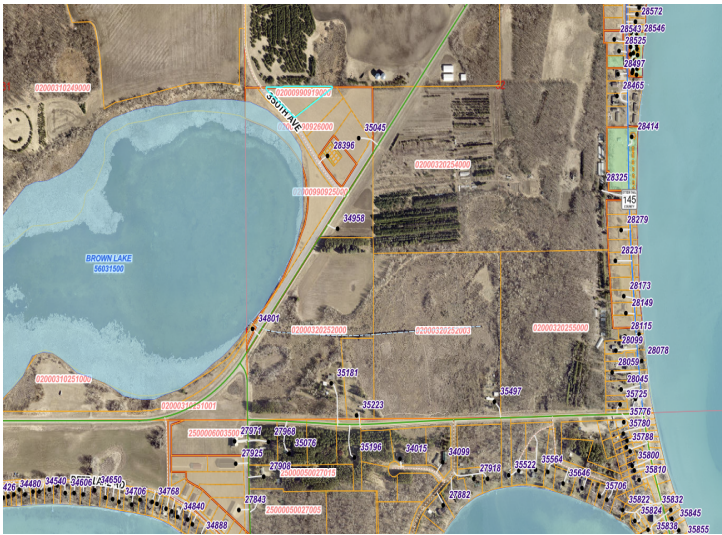
**218-237-3333**

[info@affinityrealestate.com](mailto:info@affinityrealestate.com)



Affinity Real Estate - 600 Park Avenue South - Park Rapids MN 56470





website: [www.AffinityRealEstate.com](http://www.AffinityRealEstate.com) | email: [info@affinityrealestate.com](mailto:info@affinityrealestate.com) | office: 218-237-3333 | fax:218-237-3377



**\$75,000**  
MLS 7017799 Land  
TBD 350th Ave  
Battle Lake MN 56515