



MLS 7017861 Residential

\$599,900

1,820 sq ft
4 bedrooms
2 baths

8136 County Road 123
Brainerd MN 56401

Status: Active

Description:

Tastefully updated and impeccably maintained 4 bed, 2 bath home on 2.5 acres at the edge of Brainerd, offering privacy and quiet surroundings. Features include beautiful wood floors, a great kitchen, and excellent curb appeal. Enjoy outdoor living with Trex decking, a fenced yard, and a fantastic pool area. Property includes a 2-car attached garage plus a detached heated and air-conditioned shop/garage—perfect for hobbies or extra storage. A move-in ready home with comfort, style, and space inside and out!

Additional Details:

Year Built	2000
Lot Acres	2.5
Lot Dimensions	621x176
Garage Stalls	4
School District	896
Taxes	\$2,534
Taxes with Assessments	\$2,534
Tax Year	2025

Additional Features:

Basement: Drain Tiled, Egress Window(s), Finished, Full, Wood **Fuel:** Array **Garage:** 4 **Heat:** Forced Air, Heat Pump **Sewer:** Tank with Drainage Field **Water:** 4-Inch Submersible, Drilled, Well **Air Conditioning:** Central Air

Driving Directions:

From MN-371B N: turn right onto St. Mathias Rd SW, turn left onto Co Rd 123 SW. Home will be the third driveway on the left.



Listed By:
eXp Realty

Affinity Real Estate Inc. participates in the Regional Multiple Listing Service of Minnesota, Inc Broker Reciprocity (sm) program, allowing us to display other broker's listings on our website. All properties are subject to prior sale, change or withdrawal.



Call Affinity Real Estate

218-237-3333

info@affinityrealestate.com



Affinity Real Estate - 600 Park Avenue South - Park Rapids MN 56470



website: www.AffinityRealEstate.com | email: info@affinityrealestate.com | office: 218-237-3333 | fax:218-237-3377



\$599,900
MLS 7017861 Residential
8136 County Road 123
Brainerd MN 56401



website: www.AffinityRealEstate.com | email: info@affinityrealestate.com | office: 218-237-3333 | fax: 218-237-3377

Affinity
REAL ESTATE INC

\$599,900
MLS 7017861 Residential
8136 County Road 123
Brainerd MN 56401



website: www.AffinityRealEstate.com | email: info@affinityrealestate.com | office: 218-237-3333 | fax:218-237-3377

Affinity
REAL ESTATE INC

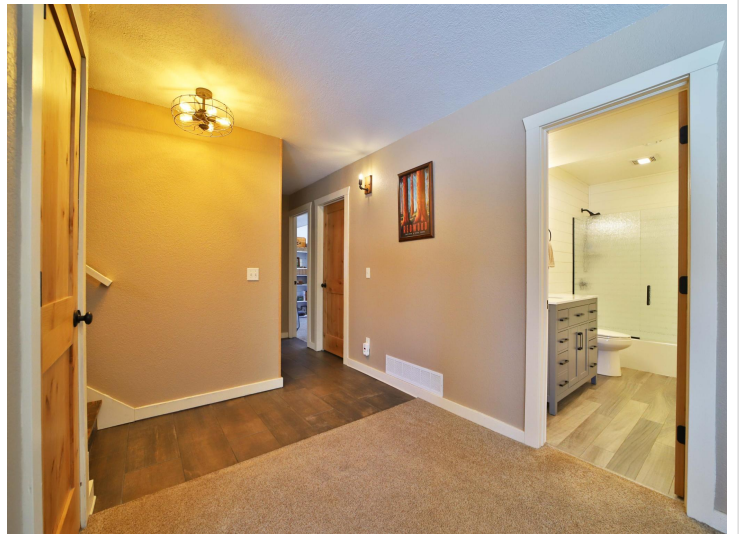
\$599,900
MLS 7017861 Residential
8136 County Road 123
Brainerd MN 56401



website: www.AffinityRealEstate.com | email: info@affinityrealestate.com | office: 218-237-3333 | fax:218-237-3377

Affinity
REAL ESTATE INC

\$599,900
MLS 7017861 Residential
8136 County Road 123
Brainerd MN 56401



website: www.AffinityRealEstate.com | email: info@affinityrealestate.com | office: 218-237-3333 | fax:218-237-3377

Affinity
REAL ESTATE INC

\$599,900
MLS 7017861 Residential
8136 County Road 123
Brainerd MN 56401



website: www.AffinityRealEstate.com | email: info@affinityrealestate.com | office: 218-237-3333 | fax:218-237-3377

Affinity
REAL ESTATE INC

\$599,900
MLS 7017861 Residential
8136 County Road 123
Brainerd MN 56401



website: www.AffinityRealEstate.com | email: info@affinityrealestate.com | office: 218-237-3333 | fax: 218-237-3377

Affinity
REAL ESTATE INC

\$599,900
MLS 7017861 Residential
8136 County Road 123
Brainerd MN 56401



website: www.AffinityRealEstate.com | email: info@affinityrealestate.com | office: 218-237-3333 | fax:218-237-3377

Affinity
REAL ESTATE INC

\$599,900
MLS 7017861 Residential
8136 County Road 123
Brainerd MN 56401



website: www.AffinityRealEstate.com | email: info@affinityrealestate.com | office: 218-237-3333 | fax: 218-237-3377

Affinity
REAL ESTATE INC

\$599,900
MLS 7017861 Residential
8136 County Road 123
Brainerd MN 56401



website: www.AffinityRealEstate.com | email: info@affinityrealestate.com | office: 218-237-3333 | fax:218-237-3377

Affinity
REAL ESTATE INC

\$599,900
MLS 7017861 Residential
8136 County Road 123
Brainerd MN 56401



website: www.AffinityRealEstate.com | email: info@affinityrealestate.com | office: 218-237-3333 | fax:218-237-3377



\$599,900
MLS 7017861 Residential
8136 County Road 123
Brainerd MN 56401