



MLS 7019599 Residential

\$539,000

1,836 sq ft
2 bedrooms
2 baths

36949 Sundance Loop
Crosslake MN 56442

Status: Active

Description:

Sundance Ridge on the Whitefish Chain with Lakeside & Sunset Views — Lakeside Living Made Effortless. The perfect low-maintenance retreat in the heart of Crosslake with a boat slip! Sundance Ridge offers the ideal blend of lake living and resort-style convenience — all just steps from dining, shopping, and recreation. Nestled along the coveted Whitefish Chain of Lakes, this rare lower-level condo (Unit #825) offers easy access to the water and an inviting, private lakeside escape — complete with your own boat slip. Property Highlights: 2 Bedrooms | 2 Bathrooms (including primary suite) with pullout sofa sleeper (sleeps 6), cozy living room with built-in gas fireplace, Spacious kitchen and large utility room with washer & dryer, Two lockable owner storage rooms + one-stall garage for vehicle, golf cart, or toys, Covered patio plumbed for a natural gas grill — perfect for lakeside evenings.

Resort-Style Amenities, Enjoy the best of both worlds — carefree ownership with resort-like amenities right at your doorstep: Sandy swimming beach, lakeside firepit, and playground, Heated indoor pool, hot tub, sauna, and fitness center. Across the street, Sundance Firehall offers pickleball, ping pong, billiards, tennis, and a community lounge. On-site management through Woods to Water, offering an optional rental program with full-service marketing, reservations, housekeeping, maintenance, and revenue management
Maintenance-Free Ownership Switch instantly to vacation mode — the association handles lawn care, snow removal, and exterior upkeep so you can focus on enjoying lake life. Whether you're visiting for a weekend or staying full-time, Sundance Ridge ensures effortless ownership every season.

Location, Location, Location. Located just off the shores of Crosslake, Sundance Ridge puts you in the center of everything: Steps from the paved bike trail connecting to local shops, restaurants, and parks
Minutes to pickleball courts, city park, and community center. Easy access by boat to Rafferty's, Zorbaz, The Wharf, Moonlight Bay, and Manhattan Beach Lodge.

The Whitefish Chain's 14 interconnected lakes (13,660 acres) offer endless opportunities for boating, wake surfing, fishing, and exploring

Crosslake Lifestyle, From summer festivals and farmers markets to winter snowmobiling and ski adventures, Crosslake is a true year-round destination. Explore local favorites like the classic boat show, cardboard boat races, and the beloved annual pig roast — or hit nearby Mount Ski Gull and the Cuyuna trails in winter. There's something for everyone, in every season. Pet-Friendly Community

Bring your furry family members along — pets are welcome at Sundance Ridge! Condo #825 at Sundance Ridge offers the best of carefree living, lakeside recreation, and small-town charm — all within one of Minnesota's most sought-after lake destinations. Whether you're looking for a weekend escape, a home office, or a year-round home, it's simple to live the lake life you've always imagined. Showings must be coordinated outside of dates.

Year Built	2009
Lot Acres	0.05
Lot Dimensions	common
Garage Stalls	1
School District	909

Additional Details:

Affinity Real Estate Inc. participates in the Regional Multiple Listing Service of Minnesota, Inc Broker Reciprocity (sm) program, allowing us to display other broker's listings on our website. All properties are subject to prior sale, change or withdrawal.

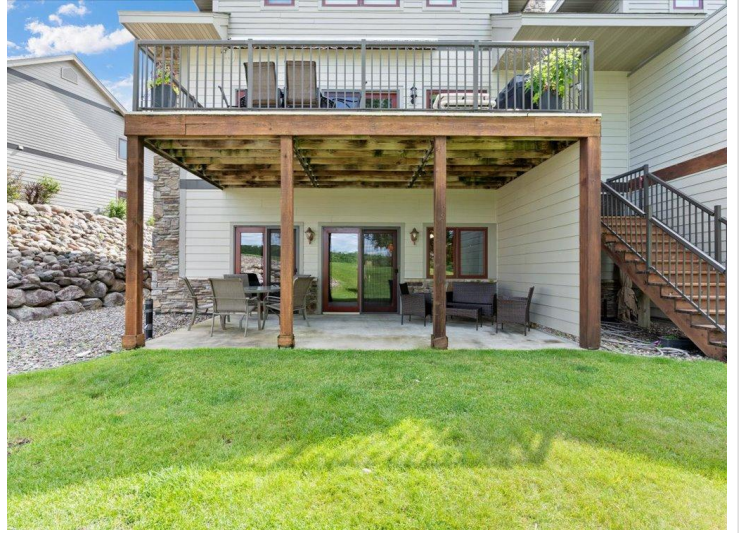


Call Affinity Real Estate
218-237-3333

info@affinityrealestate.com



Affinity Real Estate - 600 Park Avenue South - Park Rapids MN 56470



website: www.AffinityRealEstate.com | email: info@affinityrealestate.com | office: 218-237-3333 | fax:218-237-3377



\$539,000
MLS 7019599 Residential
36949 Sundance Loop
Crosslake MN 56442



website: www.AffinityRealEstate.com | email: info@affinityrealestate.com | office: 218-237-3333 | fax:218-237-3377



\$539,000
MLS 7019599 Residential
36949 Sundance Loop
Crosslake MN 56442



website: www.AffinityRealEstate.com | email: info@affinityrealestate.com | office: 218-237-3333 | fax:218-237-3377



\$539,000
MLS 7019599 Residential
36949 Sundance Loop
Crosslake MN 56442



website: www.AffinityRealEstate.com | email: info@affinityrealestate.com | office: 218-237-3333 | fax:218-237-3377

Affinity
REAL ESTATE INC

\$539,000
MLS 7019599 Residential
36949 Sundance Loop
Crosslake MN 56442



website: www.AffinityRealEstate.com | email: info@affinityrealestate.com | office: 218-237-3333 | fax: 218-237-3377

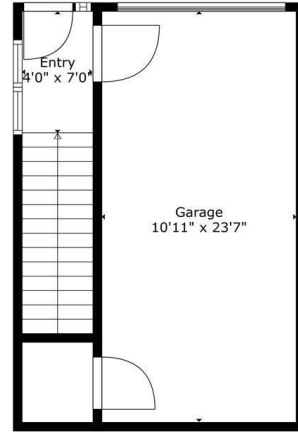


\$539,000
 MLS 7019599 Residential
 36949 Sundance Loop
 Crosslake MN 56442



TOTAL: 1483 sq. ft.
FLOOR 1: 1391 sq. ft. FLOOR 2: 92 sq. ft.
EXCLUDED AREAS: GARAGE: 259 sq. ft.
WALLS: 142 sq. ft.

Size And Dimensions Are Approximate. Actual Measurements May Vary.



TOTAL: 1483 sq. ft.
FLOOR 1: 1391 sq. ft. FLOOR 2: 92 sq. ft.
EXCLUDED AREAS: GARAGE: 259 sq. ft.
WALLS: 142 sq. ft.

Size And Dimensions Are Approximate. Actual Measurements May Vary.



FLOOR 1



FLOOR 2

website: www.AffinityRealEstate.com | email: info@affinityrealestate.com | office: 218-237-3333 | fax: 218-237-3377



\$539,000
 MLS 7019599 Residential
 36949 Sundance Loop
 Crosslake MN 56442