



MLS 7019655 Land

\$18,500

0.708 Acres
Finished Lot(s)

TBD Oriole Court
Browerville MN 56438

Status: Active

Description:

Spectacular Lot tucked away at the end of a cul de sac, with a nice size pond in the back that is part of the property. This will make an amazing home site or cabin with a great view of the pond. Adjoining lot also for sale. Deeded access to 4 nearby lakes and other great amenities for property owners, roads are plowed for year round living, and enjoyment. Owner/Agent

Additional Details:

Lot Acres	0.708
Lot Dimensions	48x200x100x135x210
School District	1062
Taxes	\$24
Taxes with Assessments	\$10
Tax Year	2025

Additional Features:

Driving Directions:

400th Street to Oriole court to end, cul-de-sac.



Listed By:
Smart Choice Realty

Affinity Real Estate Inc. participates in the Regional Multiple Listing Service of Minnesota, Inc Broker Reciprocity (sm) program, allowing us to display other broker's listings on our website. All properties are subject to prior sale, change or withdrawal.



Call Affinity Real Estate

218-237-3333

info@affinityrealestate.com



Affinity Real Estate - 600 Park Avenue South - Park Rapids MN 56470



website: www.AffinityRealEstate.com | email: info@affinityrealestate.com | office: 218-237-3333 | fax: 218-237-3377



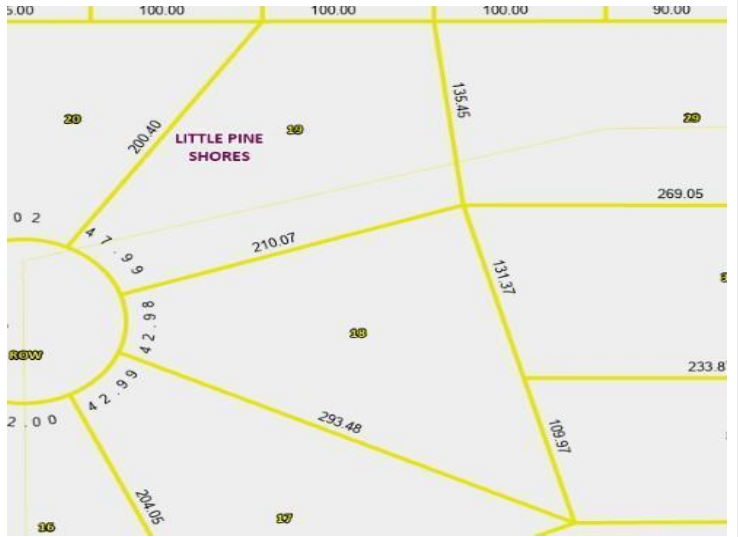
\$18,500
 MLS 7019655 Land
 TBD Oriole Court
 Browerville MN 56438



website: www.AffinityRealEstate.com | email: info@affinityrealestate.com | office: 218-237-3333 | fax: 218-237-3377



\$18,500
MLS 7019655 Land
TBD Oriole Court
Browerville MN 56438



Affinity
REAL ESTATE INC.

Page 4 of 4