



MLS 7019658 Land

**\$19,500**

0.524 Acres  
Raw Land

xxx Pequot Court  
Browerville MN 56438

Status: Active

**Description:**

This amazing Lot is Ready to build on, with a driveway into property and cleared out center surrounded by Beautiful trees and in a great location, just off the tar road, and within walking distance to the Clubhouse, swimming pool, beach that sits on fawn Lake and all the amenities there. the Lot size is 107' at road front X 198' X 141' back X 168'. it is all high ground and the perfect spot to build your cabin or year round home. Amenities include Clubhouse on fawn lake with swimming pool, sand beach, sports courts, showers, full kitchen and more. 4 lakes to enjoy. Private Campground, ATV/Golf Cart friendly roads and its on the state snowmobile trail. YEAR ROUND ENJOYMENT. Agent/Owner.

**Additional Details:**

Lot Acres	0.524
Lot Dimensions	107 x 198 x 141 x 168
School District	1062
Taxes	\$28
Taxes with Assessments	\$24
Tax Year	2025

**Additional Features:**

**Driving Directions:**

Hwy 10 to County Road 7 to county road 26 to Paradise Drive, half a mile to Pequot Court on Right



Listed By:  
Smart Choice Realty

Affinity Real Estate Inc. participates in the Regional Multiple Listing Service of Minnesota, Inc Broker Reciprocity (sm) program, allowing us to display other broker's listings on our website. All properties are subject to prior sale, change or withdrawal.



**Call Affinity Real Estate**

**218-237-3333**

**info@affinityrealestate.com**



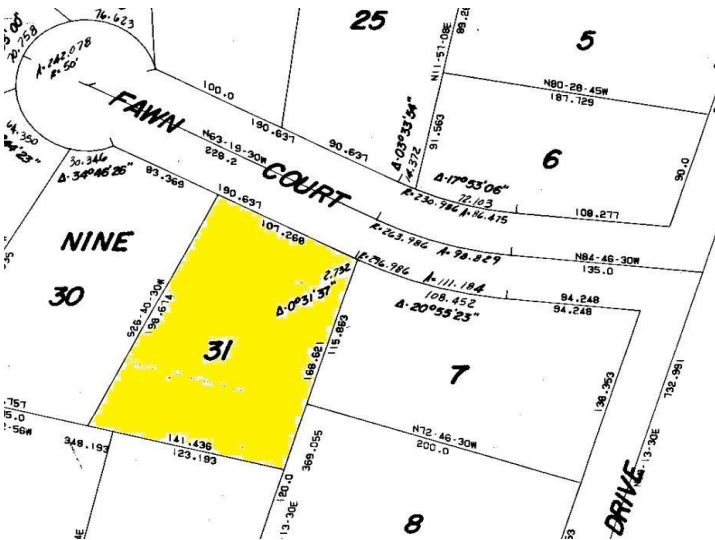
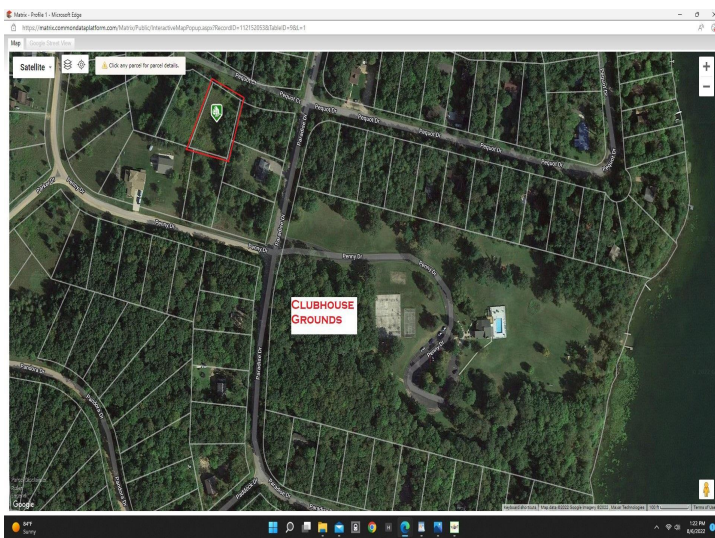
**Affinity Real Estate - 600 Park Avenue South - Park Rapids MN 56470**



website: [www.AffinityRealEstate.com](http://www.AffinityRealEstate.com) | email: [info@affinityrealestate.com](mailto:info@affinityrealestate.com) | office: 218-237-3333 | fax: 218-237-3377



**\$19,500**  
 MLS 7019658 Land  
 xxx Pequot Court  
 Browerville MN 56438



website: [www.AffinityRealEstate.com](http://www.AffinityRealEstate.com) | email: [info@affinityrealestate.com](mailto:info@affinityrealestate.com) | office: 218-237-3333 | fax: 218-237-3377



**\$19,500**  
 MLS 7019658 Land  
 xxx Pequot Court  
 Browerville MN 56438