



MLS 7020022 Lake Home

**\$625,000**

1,512 sq ft  
3 bedrooms  
2 baths

46520 Poss Beach Road  
Pelican Rapids MN 56572

Waterfront: Lizzie Lake

Status: Active

**Description:**

Summer Is Here! Enjoy the lake this summer on Lake Lizzie! The lakefront offers approximately 150 feet of shoreline on nearly one acre (.92 acres). This three-bedroom, two-bath home provides an ideal setting for both year-round living and weekend escapes, with mature trees, peaceful surroundings, and stunning lake views. Two maintenance-free decks—one lakeside and one halfway down to the lake—create perfect spaces for relaxing or entertaining, while a lakeside firepit sets the stage for memorable evenings by the water. Inside, the functional layout includes three comfortable bedrooms, each with a walk-in closet, and two full bathrooms. Large windows fill the home with natural light and frame picturesque views and sunsets over the lake. With public access just 0.6 miles away, enjoying the lake is effortless. Whether you choose to enjoy the home as is or remove it with ease and build your own custom lakeside retreat, this property offers a rare combination of shoreline, space, and location on one of the area's most desirable lakes.

**Additional Details:**

Year Built	2006
Lot Acres	0.92
Lot Dimensions	150 x 270
School District	548
Taxes	\$3,901
Taxes with Assessments	\$3,986
Tax Year	2025

**Additional Features:**

**Basement:** Other **Fuel:** Electric **Heat:** Forced Air **Sewer:** Tank with Drainage Field **Water:** Well **Air Conditioning:** Central Air

**Driving Directions:**

N HWY 59 From Pelican Rapids, East on 460th St North on Poss Beach Rd



Listed By:  
Park Co., REALTORS®

Affinity Real Estate Inc. participates in the Regional Multiple Listing Service of Minnesota, Inc Broker Reciprocity (sm) program, allowing us to display other broker's listings on our website. All properties are subject to prior sale, change or withdrawal.



Call Affinity Real Estate

**218-237-3333**

[info@affinityrealestate.com](mailto:info@affinityrealestate.com)



Affinity Real Estate - 600 Park Avenue South - Park Rapids MN 56470



website: [www.AffinityRealEstate.com](http://www.AffinityRealEstate.com) | email: [info@affinityrealestate.com](mailto:info@affinityrealestate.com) | office: 218-237-3333 | fax:218-237-3377



**\$625,000**  
MLS 7020022 Lake Home  
46520 Poss Beach Road  
Pelican Rapids MN 56572



website: [www.AffinityRealEstate.com](http://www.AffinityRealEstate.com) | email: [info@affinityrealestate.com](mailto:info@affinityrealestate.com) | office: 218-237-3333 | fax:218-237-3377



**\$625,000**  
MLS 7020022 Lake Home  
46520 Poss Beach Road  
Pelican Rapids MN 56572



website: [www.AffinityRealEstate.com](http://www.AffinityRealEstate.com) | email: [info@affinityrealestate.com](mailto:info@affinityrealestate.com) | office: 218-237-3333 | fax:218-237-3377

**Affinity**  
REAL ESTATE INC

**\$625,000**  
MLS 7020022 Lake Home  
46520 Poss Beach Road  
Pelican Rapids MN 56572



website: [www.AffinityRealEstate.com](http://www.AffinityRealEstate.com) | email: [info@affinityrealestate.com](mailto:info@affinityrealestate.com) | office: 218-237-3333 | fax:218-237-3377



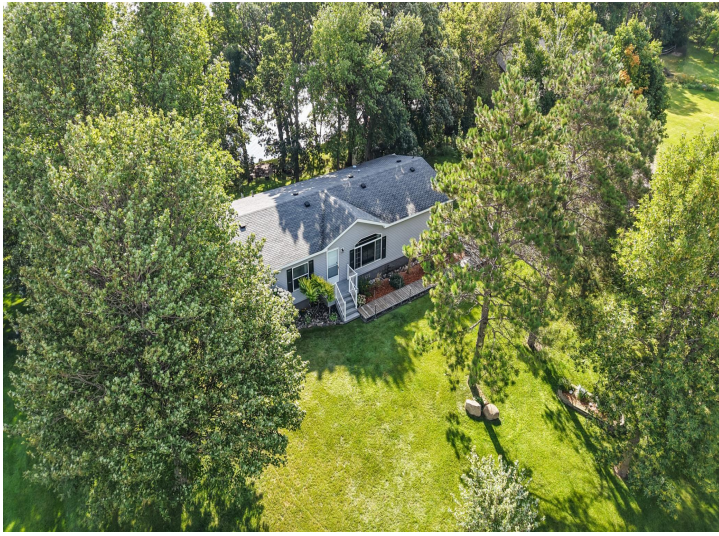
**\$625,000**  
MLS 7020022 Lake Home  
46520 Poss Beach Road  
Pelican Rapids MN 56572



website: [www.AffinityRealEstate.com](http://www.AffinityRealEstate.com) | email: [info@affinityrealestate.com](mailto:info@affinityrealestate.com) | office: 218-237-3333 | fax:218-237-3377



**\$625,000**  
MLS 7020022 Lake Home  
46520 Poss Beach Road  
Pelican Rapids MN 56572



website: [www.AffinityRealEstate.com](http://www.AffinityRealEstate.com) | email: [info@affinityrealestate.com](mailto:info@affinityrealestate.com) | office: 218-237-3333 | fax:218-237-3377



**\$625,000**  
MLS 7020022 Lake Home  
46520 Poss Beach Road  
Pelican Rapids MN 56572



website: [www.AffinityRealEstate.com](http://www.AffinityRealEstate.com) | email: [info@affinityrealestate.com](mailto:info@affinityrealestate.com) | office: 218-237-3333 | fax:218-237-3377



**\$625,000**  
MLS 7020022 Lake Home  
46520 Poss Beach Road  
Pelican Rapids MN 56572