



MLS 7020052 Residential

**\$930,000**

3,260 sq ft  
4 bedrooms  
3 baths

32360 Pickerel Lake Road  
Detroit Lakes MN 56501

Status: Active

**Description:**

Enjoy lake living on picturesque Pickerel Lake in this meticulously maintained 4-bed, 3-bath stick-built Tomahawk log home. Set on 1.13 acres with 182' of natural shoreline, the lake is known for exceptional water clarity and peaceful views. Built in 2000, this 3,500 sq ft home features two primary bedrooms, main-floor laundry, a bright sunroom, and a welcoming 3-season porch. Warm log beams, Australian cypress and hickory floors add rustic character throughout.

Quality features include an ICF foundation with efficient in-floor heating, Marvin aluminum-clad windows, custom hickory cabinetry, Corian countertops, stainless appliances, and a masonry wood-burning fireplace. New shingles on the home and garage (2024) and compliant septic. Detached 24x30 (2½-stall) garage with tar driveway.

Just 15 minutes from Detroit Lakes with nearby snowmobile, skiing, and scenic hiking trails. Peaceful lake views, abundant wildlife, and the call of the loons.

**Additional Details:**

Year Built	2000
Lot Acres	1.13
Lot Dimensions	irregular
Garage Stalls	2
School District	1074
Taxes	\$5,236
Taxes with Assessments	\$5,236
Tax Year	2025

**Additional Features:**

**Basement:** Daylight/Lookout Windows, Drain Tiled, Egress Window(s), Finished, Full, Concrete, Storage Space, Sump Pump **Fuel:** Array **Garage:** 2 **Heat:** Baseboard, Dual Fuel/Off Peak, Forced Air, Fireplace(s), In-Floor Heating **Sewer:** Septic System Compliant - Yes **Water:** Drilled, Private, Well **Air Conditioning:** Central Air

**Driving Directions:**

32360 SW Pickerel Lk Rd, Detroit Lakes  
 \* 32360 SW Pickerel Lk Rd  
 Counselor Realty Detroit Lakes



Affinity Real Estate Inc. participates in the Regional Multiple Listing Service of Minnesota, Inc Broker Reciprocity (sm) program, allowing us to display other broker's listings on our website. All properties are subject to prior sale, change or withdrawal.



**Call Affinity Real Estate**

**218-237-3333**

**info@affinityrealestate.com**



**Affinity Real Estate - 600 Park Avenue South - Park Rapids MN 56470**



website: [www.AffinityRealEstate.com](http://www.AffinityRealEstate.com) | email: [info@affinityrealestate.com](mailto:info@affinityrealestate.com) | office: 218-237-3333 | fax: 218-237-3377

**Affinity**  
REAL ESTATE INC

**\$930,000**  
MLS 7020052 Residential  
32360 Pickerel Lake Road  
Detroit Lakes MN 56501



website: [www.AffinityRealEstate.com](http://www.AffinityRealEstate.com) | email: [info@affinityrealestate.com](mailto:info@affinityrealestate.com) | office: 218-237-3333 | fax: 218-237-3377

**Affinity**  
REAL ESTATE INC

**\$930,000**  
MLS 7020052 Residential  
32360 Pickerel Lake Road  
Detroit Lakes MN 56501



website: [www.AffinityRealEstate.com](http://www.AffinityRealEstate.com) | email: [info@affinityrealestate.com](mailto:info@affinityrealestate.com) | office: 218-237-3333 | fax: 218-237-3377

**Affinity**  
REAL ESTATE INC

**\$930,000**  
MLS 7020052 Residential  
32360 Pickerel Lake Road  
Detroit Lakes MN 56501



website: [www.AffinityRealEstate.com](http://www.AffinityRealEstate.com) | email: [info@affinityrealestate.com](mailto:info@affinityrealestate.com) | office: 218-237-3333 | fax: 218-237-3377

**Affinity**  
REAL ESTATE INC

**\$930,000**  
MLS 7020052 Residential  
32360 Pickerel Lake Road  
Detroit Lakes MN 56501



website: [www.AffinityRealEstate.com](http://www.AffinityRealEstate.com) | email: [info@affinityrealestate.com](mailto:info@affinityrealestate.com) | office: 218-237-3333 | fax:218-237-3377

**Affinity**  
REAL ESTATE INC

**\$930,000**  
MLS 7020052 Residential  
32360 Pickerel Lake Road  
Detroit Lakes MN 56501



website: [www.AffinityRealEstate.com](http://www.AffinityRealEstate.com) | email: [info@affinityrealestate.com](mailto:info@affinityrealestate.com) | office: 218-237-3333 | fax:218-237-3377

**Affinity**  
REAL ESTATE INC

**\$930,000**  
MLS 7020052 Residential  
32360 Pickerel Lake Road  
Detroit Lakes MN 56501



website: [www.AffinityRealEstate.com](http://www.AffinityRealEstate.com) | email: [info@affinityrealestate.com](mailto:info@affinityrealestate.com) | office: 218-237-3333 | fax: 218-237-3377

**Affinity**  
REAL ESTATE INC

**\$930,000**  
MLS 7020052 Residential  
32360 Pickerel Lake Road  
Detroit Lakes MN 56501



website: [www.AffinityRealEstate.com](http://www.AffinityRealEstate.com) | email: [info@affinityrealestate.com](mailto:info@affinityrealestate.com) | office: 218-237-3333 | fax:218-237-3377

**Affinity**  
REAL ESTATE INC

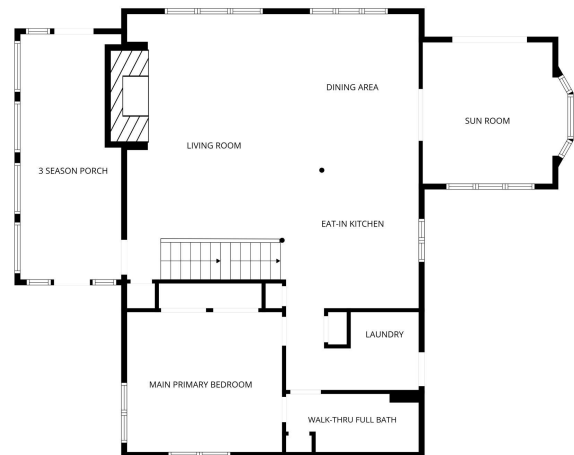
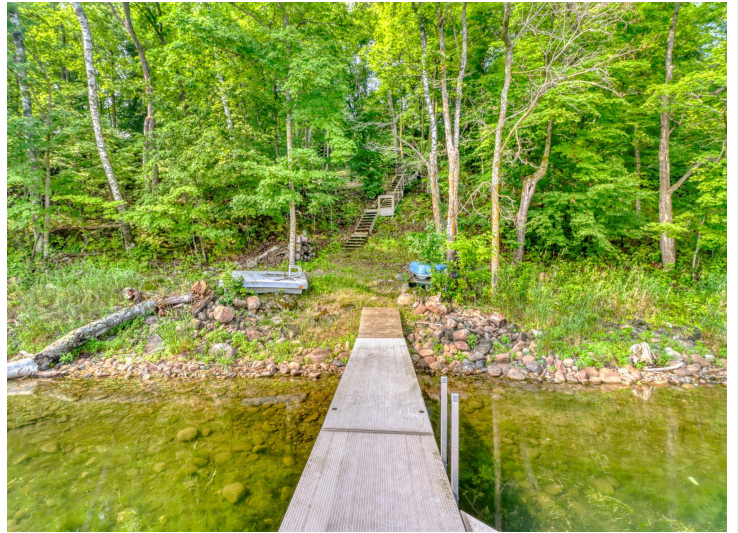
**\$930,000**  
MLS 7020052 Residential  
32360 Pickerel Lake Road  
Detroit Lakes MN 56501



website: [www.AffinityRealEstate.com](http://www.AffinityRealEstate.com) | email: [info@affinityrealestate.com](mailto:info@affinityrealestate.com) | office: 218-237-3333 | fax:218-237-3377



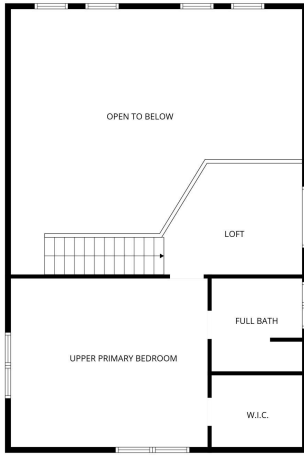
**\$930,000**  
MLS 7020052 Residential  
32360 Pickerel Lake Road  
Detroit Lakes MN 56501



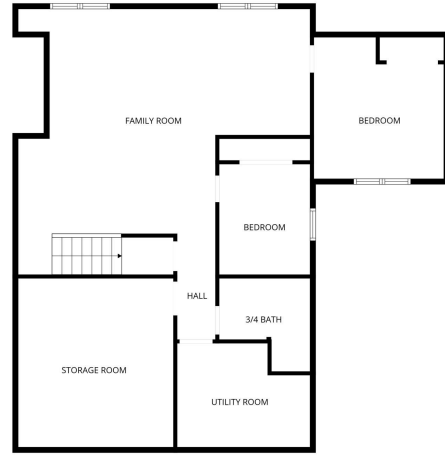
website: [www.AffinityRealEstate.com](http://www.AffinityRealEstate.com) | email: [info@affinityrealestate.com](mailto:info@affinityrealestate.com) | office: 218-237-3333 | fax:218-237-3377



**\$930,000**  
 MLS 7020052 Residential  
 32360 Pickerel Lake Road  
 Detroit Lakes MN 56501



FLOOR PLAN CREATED BY CUBICASA APP. MEASUREMENTS DEEMED HIGHLY RELIABLE BUT NOT GUARANTEED.



FLOOR PLAN CREATED BY CUBICASA APP. MEASUREMENTS DEEMED HIGHLY RELIABLE BUT NOT GUARANTEED.

website: [www.AffinityRealEstate.com](http://www.AffinityRealEstate.com) | email: [info@affinityrealestate.com](mailto:info@affinityrealestate.com) | office: 218-237-3333 | fax: 218-237-3377



**\$930,000**  
 MLS 7020052 Residential  
 32360 Pickerel Lake Road  
 Detroit Lakes MN 56501