



MLS 7020156 Residential

\$324,900

2,006 sq ft
3 bedrooms
2 baths

9413 Forest Heights Drive
Brainerd MN 56401

Status: Coming Soon

Description:

Don't miss this 3+ bedroom, two bath remodeled Brainerd home. Home features a freshly painted interior, two new decks, large 4-car detached garage, central air, some new doors and windows, new stainless steel kitchen appliances, new flooring, a full finished walkout basement, new light fixtures, and is situated on a 2.86-acre wooded lot. Set up a showing today.

Additional Details:

Year Built	1980
Lot Acres	2.86
Lot Dimensions	319x585x154x470
Garage Stalls	4
School District	896
Taxes	\$1,532
Taxes with Assessments	\$1,532
Tax Year	2026

Additional Features:

Basement: Daylight/Lookout Windows, Finished, Full, Walkout **Fuel:** Array **Garage:** 4 **Heat:** Forced Air **Sewer:** Private Sewer, Septic System Compliant - Yes, Tank with Drainage Field **Water:** Drilled, Private, Well **Air Conditioning:** Central Air

Driving Directions:

South on Business 371 to Left on Greenwood St. to Right on Forest Heights Drive to House on Right.



Listed By:
eXp Realty

Affinity Real Estate Inc. participates in the Regional Multiple Listing Service of Minnesota, Inc Broker Reciprocity (sm) program, allowing us to display other broker's listings on our website. All properties are subject to prior sale, change or withdrawal.



Call Affinity Real Estate

218-237-3333

info@affinityrealestate.com



Affinity Real Estate - 600 Park Avenue South - Park Rapids MN 56470



website: www.AffinityRealEstate.com | email: info@affinityrealestate.com | office: 218-237-3333 | fax: 218-237-3377



\$324,900
 MLS 7020156 Residential
 9413 Forest Heights Drive
 Brainerd MN 56401



website: www.AffinityRealEstate.com | email: info@affinityrealestate.com | office: 218-237-3333 | fax: 218-237-3377



\$324,900
 MLS 7020156 Residential
 9413 Forest Heights Drive
 Brainerd MN 56401



website: www.AffinityRealEstate.com | email: info@affinityrealestate.com | office: 218-237-3333 | fax: 218-237-3377



\$324,900
MLS 7020156 Residential
9413 Forest Heights Drive
Brainerd MN 56401



website: www.AffinityRealEstate.com | email: info@affinityrealestate.com | office: 218-237-3333 | fax: 218-237-3377



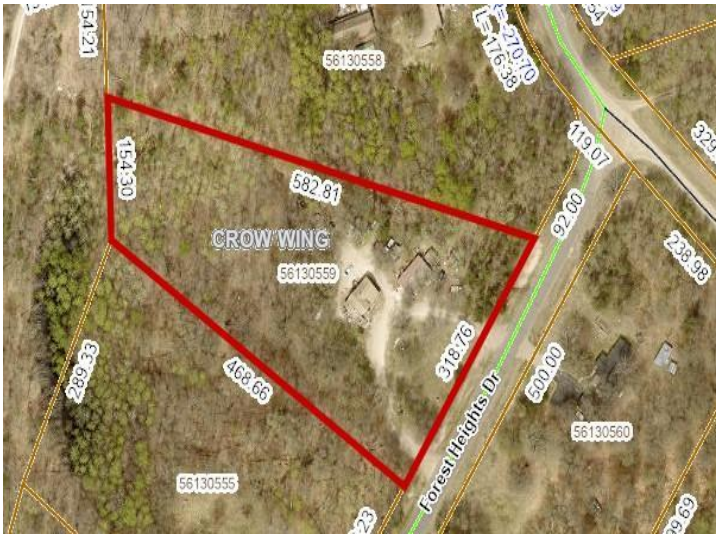
\$324,900
 MLS 7020156 Residential
 9413 Forest Heights Drive
 Brainerd MN 56401



website: www.AffinityRealEstate.com | email: info@affinityrealestate.com | office: 218-237-3333 | fax: 218-237-3377



\$324,900
 MLS 7020156 Residential
 9413 Forest Heights Drive
 Brainerd MN 56401



website: www.AffinityRealEstate.com | email: info@affinityrealestate.com | office: 218-237-3333 | fax: 218-237-3377



\$324,900

MLS 7020156 Residential
9413 Forest Heights Drive
Brainerd MN 56401



website: www.AffinityRealEstate.com | email: info@affinityrealestate.com | office: 218-237-3333 | fax:218-237-3377



\$324,900

MLS 7020156 Residential
9413 Forest Heights Drive
Brainerd MN 56401