



MLS 7020432 Land

\$29,900

1.27 Acres
Raw Land

Lot 11 Firewood Trail
Park Rapids MN 56470

Status: Active

Description:

Just a short drive from Park Rapids sits this secluded building lot. Beautifully treed and rolling topography give you many options for building or just holding for future use. Electricity is in the road along with internet. Only minutes to Fishhook Lake, Headwaters golf Course and all the amenities Park Rapids has to offer. Additional lot available, MLS #7020448

Additional Details:

Lot Acres	1.27
Lot Dimensions	153x275x240x285
School District	1384
Taxes	\$100
Taxes with Assessments	\$100
Tax Year	2025

Additional Features:

Driving Directions:

From Hwy 71/34 in Park Rapids, East on 34 to a left onto Central Avenue, continue for 2.7 miles to a right onto 204th St, take your first left onto Firewood trail and follow to property on Right.



Listed By:
Wolff & Simon Real Estate

Affinity Real Estate Inc. participates in the Regional Multiple Listing Service of Minnesota, Inc Broker Reciprocity (sm) program, allowing us to display other broker's listings on our website. All properties are subject to prior sale, change or withdrawal.



Call Affinity Real Estate

218-237-3333

info@affinityrealestate.com



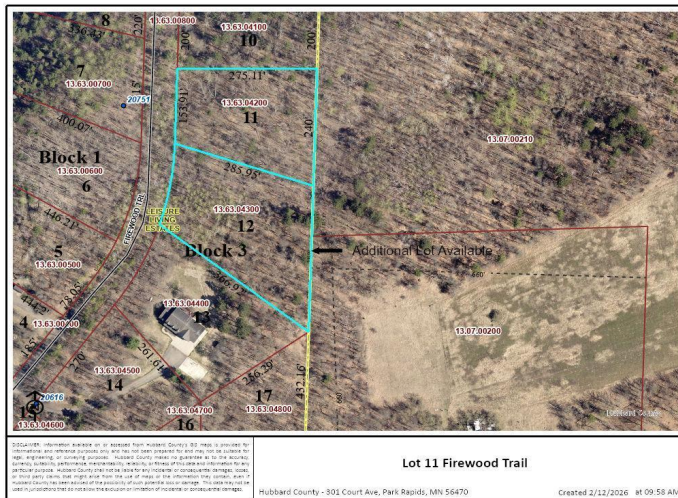
Affinity Real Estate - 600 Park Avenue South - Park Rapids MN 56470



website: www.AffinityRealEstate.com | email: info@affinityrealestate.com | office: 218-237-3333 | fax: 218-237-3377



\$29,900
MLS 7020432 Land
Lot 11 Firewood Trail
Park Rapids MN 56470



website: www.AffinityRealEstate.com | email: info@affinityrealestate.com | office: 218-237-3333 | fax: 218-237-3377



\$29,900
 MLS 7020432 Land
 Lot 11 Firewood Trail
 Park Rapids MN 56470