



MLS 7020448 Land

\$29,900

1.76 Acres

Raw Land

Lot 12 Firewood Trail
Park Rapids MN 56470

Status: Active

Description:

Just a short drive from Park Rapids sits this secluded building lot. Beautifully treed and rolling topography give you many options for building or just holding for future use. Electricity is in the road along with internet. Only minutes to Fishhook Lake, Headwaters golf Course and all the amenities Park Rapids has to offer. Additional lot available, MLS #7020432

Additional Details:

Lot Acres	1.76
Lot Dimensions	170x286x300x367
School District	1384
Taxes	\$108
Taxes with Assessments	\$108
Tax Year	2025

Additional Features:

Driving Directions:

From Hwy 71/34 in Park Rapids, East on 34 to a left onto Central Avenue, continue for 2.7 miles to a right onto 204th St, take your first left onto Firewood trail and follow to property on Right.



Listed By:
Wolff & Simon Real Estate

Affinity Real Estate Inc. participates in the Regional Multiple Listing Service of Minnesota, Inc Broker Reciprocity (sm) program, allowing us to display other broker's listings on our website. All properties are subject to prior sale, change or withdrawal.



Call Affinity Real Estate

218-237-3333

info@affinityrealestate.com

MLS



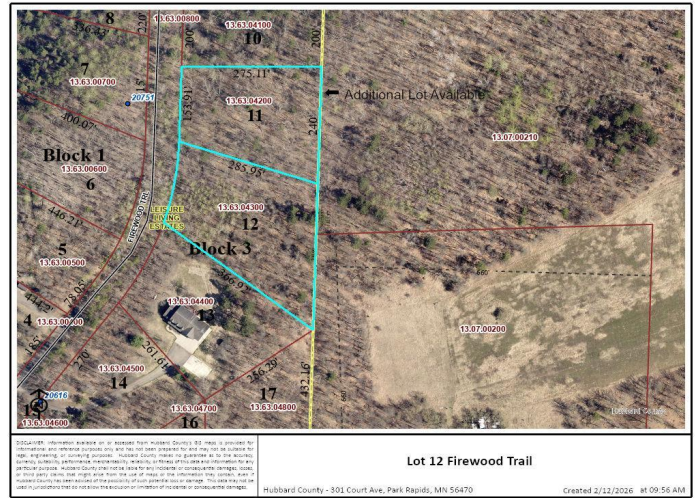
Affinity Real Estate - 600 Park Avenue South - Park Rapids MN 56470



website: www.AffinityRealEstate.com | email: info@affinityrealestate.com | office: 218-237-3333 | fax: 218-237-3377



\$29,900
MLS 7020448 Land
Lot 12 Firewood Trail
Park Rapids MN 56470



website: www.AffinityRealEstate.com | email: info@affinityrealestate.com | office: 218-237-3333 | fax: 218-237-3377



\$29,900
MLS 7020448 Land
Lot 12 Firewood Trail
Park Rapids MN 56470