



MLS 7020592 Residential

\$470,000

1,812 sq ft
3 bedrooms
2 baths

7110 County Road 6
Garfield MN 56332

Status: Active

Description:

There is not much that beats a country setting with a charming house, seated on a generous amount of acres, but this house does. It is the perfect country charmer, updated, meticulously maintained, equipped with all the things you need & want. With an updated kitchen, island seating, "almost-a" primary suite, an updated main floor bath, double sinks, heated tile floors, and perfectly positioned right next to the main floor bedroom that has two closets- it's an "almost-a master". Need another bedroom, nursery or main floor office, this has it. The main floor boasts with natural light and timeless character, accompanied with real wood floors that have been polished and maintained, tall ornate baseboards, crafted casing and framed archways are just part of the grand package this property offers. Always wished for a sunporch, come enjoy this one with the morning sun, formal dining your thing, come envision your table and chairs here. Want a space for the kids or guests, the upstairs is perfect. Comfy bedrooms, big closets and additional room for storage or an upstairs bath?? There are two basements, the original and the new basement. One for utilities and lots of storage and one for modern day family time, watch a movie, watch the game, or hang out in quiet comfort. The outside is sure to please with a detached 4 stall garage, that includes an insulated and finished shop space, paver patio, garden shed, chicken coop and insulated shop with concrete floor & lean to. Timeless beauty, modern comforts will fill your heart as you tour this home.

Additional Details:

Year Built	1928
Lot Acres	13.43
Lot Dimensions	441x1329x441x1330
Garage Stalls	6
School District	1015
Taxes	\$3,210
Taxes with Assessments	\$3,210
Tax Year	2025

Additional Features:

Basement: Finished, Concrete, Unfinished **Fuel:** Array **Garage:** 6 **Heat:** Forced Air **Sewer:** Private Sewer **Water:** Drilled, Private, Well **Air Conditioning:** Central Air

Driving Directions:

 Listed by home on left
Real Estate by Jo, LLC

Affinity Real Estate Inc. participates in the Regional Multiple Listing Service of Minnesota, Inc Broker Reciprocity (sm) program, allowing us to display other broker's listings on our website. All properties are subject to prior sale, change or withdrawal.



Call Affinity Real Estate

218-237-3333

info@affinityrealestate.com



Affinity Real Estate - 600 Park Avenue South - Park Rapids MN 56470



website: www.AffinityRealEstate.com | email: info@affinityrealestate.com | office: 218-237-3333 | fax: 218-237-3377

Affinity
REAL ESTATE INC

\$470,000
MLS 7020592 Residential
7110 County Road 6
Garfield MN 56332



website: www.AffinityRealEstate.com | email: info@affinityrealestate.com | office: 218-237-3333 | fax: 218-237-3377

Affinity
REAL ESTATE INC

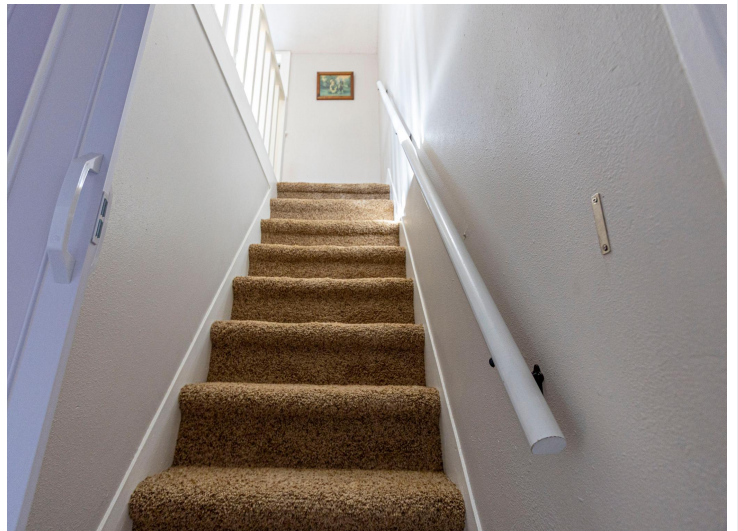
\$470,000
MLS 7020592 Residential
7110 County Road 6
Garfield MN 56332



website: www.AffinityRealEstate.com | email: info@affinityrealestate.com | office: 218-237-3333 | fax: 218-237-3377



\$470,000
 MLS 7020592 Residential
 7110 County Road 6
 Garfield MN 56332



website: www.AffinityRealEstate.com | email: info@affinityrealestate.com | office: 218-237-3333 | fax: 218-237-3377

Affinity
REAL ESTATE INC

\$470,000
MLS 7020592 Residential
7110 County Road 6
Garfield MN 56332



website: www.AffinityRealEstate.com | email: info@affinityrealestate.com | office: 218-237-3333 | fax: 218-237-3377

Affinity
REAL ESTATE INC

\$470,000
MLS 7020592 Residential
7110 County Road 6
Garfield MN 56332



website: www.AffinityRealEstate.com | email: info@affinityrealestate.com | office: 218-237-3333 | fax: 218-237-3377

Affinity
REAL ESTATE INC

\$470,000
MLS 7020592 Residential
7110 County Road 6
Garfield MN 56332



website: www.AffinityRealEstate.com | email: info@affinityrealestate.com | office: 218-237-3333 | fax: 218-237-3377

Affinity
REAL ESTATE INC

\$470,000
MLS 7020592 Residential
7110 County Road 6
Garfield MN 56332



website: www.AffinityRealEstate.com | email: info@affinityrealestate.com | office: 218-237-3333 | fax: 218-237-3377



\$470,000
 MLS 7020592 Residential
 7110 County Road 6
 Garfield MN 56332



website: www.AffinityRealEstate.com | email: info@affinityrealestate.com | office: 218-237-3333 | fax: 218-237-3377



\$470,000
 MLS 7020592 Residential
 7110 County Road 6
 Garfield MN 56332



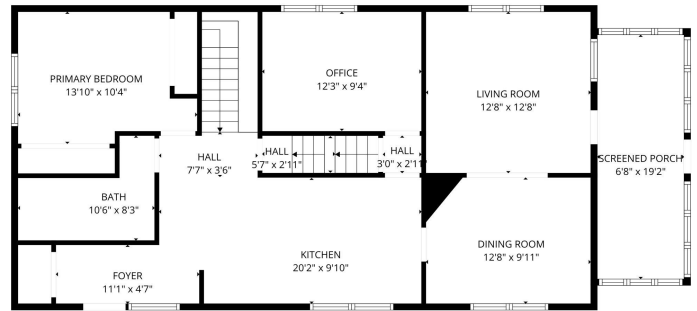
website: www.AffinityRealEstate.com | email: info@affinityrealestate.com | office: 218-237-3333 | fax: 218-237-3377



\$470,000
 MLS 7020592 Residential
 7110 County Road 6
 Garfield MN 56332



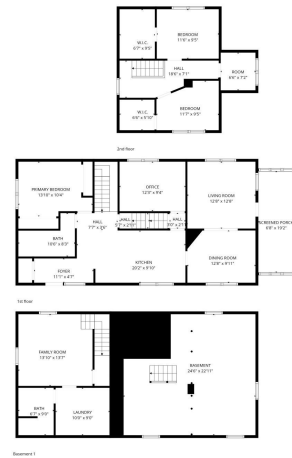
FLOOR PLAN CREATED BY CUBICASA APP. MEASUREMENTS DEEMED HIGHLY RELIABLE BUT NOT GUARANTEED.



FLOOR PLAN CREATED BY CUBICASA APP. MEASUREMENTS DEEMED HIGHLY RELIABLE BUT NOT GUARANTEED.



FLOOR PLAN CREATED BY CUBICASA APP. MEASUREMENTS DEEMED HIGHLY RELIABLE BUT NOT GUARANTEED.



Basement 1

FLOOR PLAN CREATED BY CUBICASA APP. MEASUREMENTS DEEMED HIGHLY RELIABLE BUT NOT GUARANTEED.

website: www.AffinityRealEstate.com | email: info@affinityrealestate.com | office: 218-237-3333 | fax: 218-237-3377



\$470,000
MLS 7020592 Residential
7110 County Road 6
Garfield MN 56332