



MLS 7020645 Commercial

\$0

1529-1531 Northern Pacific Road
Brainerd MN 56401

Status: Active

Description:

Place your business or retail store in one of the most unique complexes in central Minnesota. Located in the Brainerd Lakes area, the Northern Pacific Center is a large grouping of historic buildings featuring a variety of businesses (Loco Express, Notch 8, hair salon, clothing store, etc.) that create convenience and traffic and attract thousands of visitors to the NP Center each year. There are 2 main-level adjacent spaces available for lease. Each space has its own exterior entrance and both are available at the same lease terms. Space 1529 is 1,232 sq. ft. in size and is available for lease at \$18.00 per sq. ft. plus \$1.00 CAM per sq. ft. Space 1531 is 1,848 sq. ft. in size and is available for lease at \$18.00 per sq. ft. plus \$1.00 CAM per sq. ft. These figures are based on a 1-year lease.

Additional Details:

Year Built	1881
Lot Acres	45.81
Lot Dimensions	687 x 3000 x 700 x 2930 x Irr
School District	896
Taxes	\$26,607
Taxes with Assessments	\$26,632
Tax Year	2026

Additional Features:

Fuel: Array **Heat:** Ductless Mini-Split, Forced Air

Driving Directions:

From the intersection of Mill Avenue and Highway 210 in Brainerd, go west on Highway 210, then turn left (south) on County Road 45 (13th St. SE). Turn left onto Northern Pacific Road to space #'s 1529 & 1531.



Listed By:
Larson Group Real Estate/Kelle

Affinity Real Estate Inc. participates in the Regional Multiple Listing Service of Minnesota, Inc Broker Reciprocity (sm) program, allowing us to display other broker's listings on our website. All properties are subject to prior sale, change or withdrawal.



Call Affinity Real Estate

218-237-3333

info@affinityrealestate.com



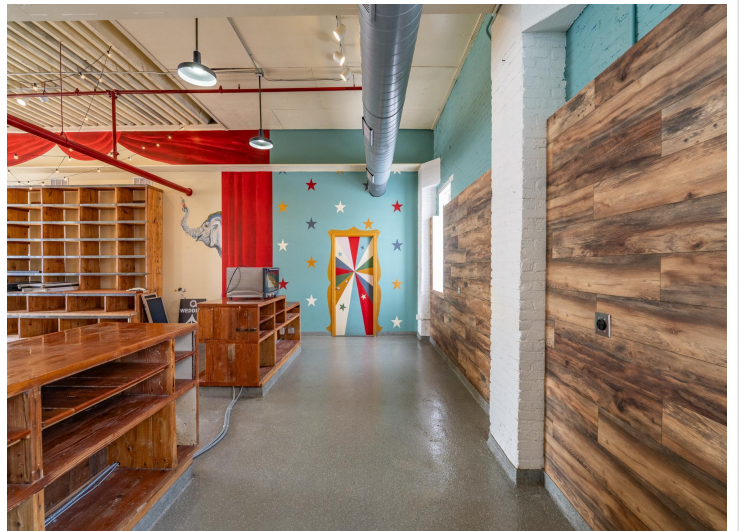
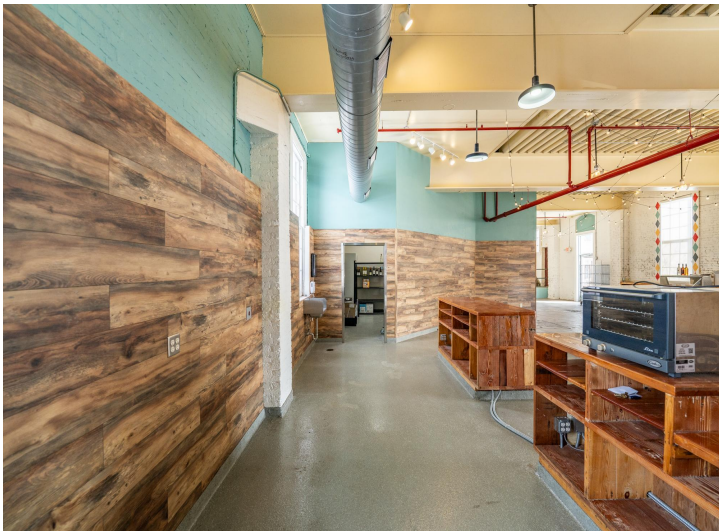
Affinity Real Estate - 600 Park Avenue South - Park Rapids MN 56470



website: www.AffinityRealEstate.com | email: info@affinityrealestate.com | office: 218-237-3333 | fax:218-237-3377

Affinity
REAL ESTATE INC

\$0
MLS 7020645 Commercial
1529-1531 Northern Pacific
Road
Brainerd MN 56401



website: www.AffinityRealEstate.com | email: info@affinityrealestate.com | office: 218-237-3333 | fax:218-237-3377



\$0
MLS 7020645 Commercial
1529-1531 Northern Pacific
Road
Brainerd MN 56401



website: www.AffinityRealEstate.com | email: info@affinityrealestate.com | office: 218-237-3333 | fax:218-237-3377



\$0
MLS 7020645 Commercial
1529-1531 Northern Pacific
Road
Brainerd MN 56401



website: www.AffinityRealEstate.com | email: info@affinityrealestate.com | office: 218-237-3333 | fax: 218-237-3377

Affinity
REAL ESTATE INC

\$0
MLS 7020645 Commercial
1529-1531 Northern Pacific
Road
Brainerd MN 56401