



MLS 7020720 Commercial

\$0

207/209-211-212 Northern Pacific Road
Brainerd MN 56401

Status: Active

Description:

Lease space available in popular Northern Pacific Center! These 2nd level spaces in the Clocktower Building are perfect for a private business space that is easy for clients to find. Take advantage of the close proximity to Loco Express and Notch 8. Located right in the heart of central Minnesota, this large complex of historic buildings features a unique grouping of businesses that create convenience and traffic. There are 3 lease spaces available that can be leased separately or together. All 3 spaces include the use of a shared bathroom. Space 207/209 is 725 sq. ft. in size and is available for lease at a \$1,300 gross lease per month. Space 211 is 235 sq. ft. in size and is available for lease at a \$750 gross lease per month. Space 212 is 1,775 sq. ft. in size and is available for lease at a \$3,000 gross lease per month.

Additional Details:

Year Built	1881
Lot Acres	45.81
Lot Dimensions	687 x 3000 x 700 x 2930 x Irr
School District	896
Taxes	\$26,607
Taxes with Assessments	\$26,632
Tax Year	2026

Additional Features:

Fuel: Array **Heat:** Forced Air

Driving Directions:

From the intersection of Mill Avenue and Highway 210 in Brainerd, go west on Highway 210, then turn left (south) on County Road 45 (13th St. SE). Turn left onto Northern Pacific Road to space #'s 207/209, 211 & 212 (located in the upper level of the Clocktower Building).



Listed By:
Larson Group Real Estate/Kelle

Affinity Real Estate Inc. participates in the Regional Multiple Listing Service of Minnesota, Inc Broker Reciprocity (sm) program, allowing us to display other broker's listings on our website. All properties are subject to prior sale, change or withdrawal.



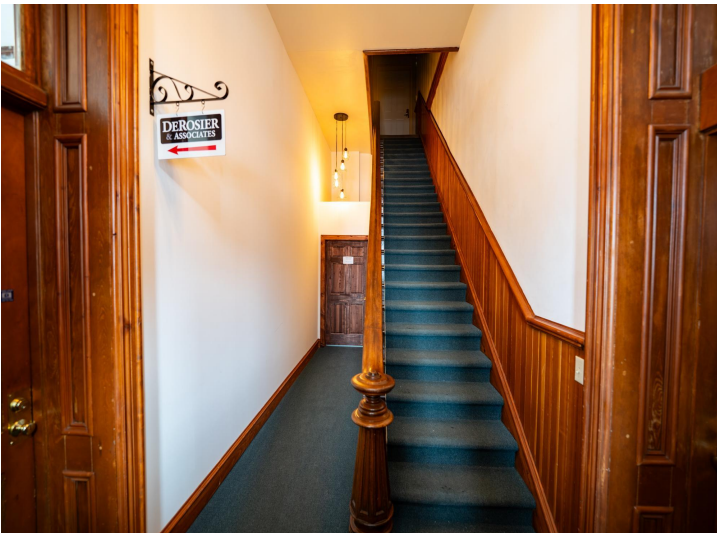
Call Affinity Real Estate

218-237-3333

info@affinityrealestate.com



Affinity Real Estate - 600 Park Avenue South - Park Rapids MN 56470



website: www.AffinityRealEstate.com | email: info@affinityrealestate.com | office: 218-237-3333 | fax: 218-237-3377

Affinity
REAL ESTATE INC

\$0
MLS 7020720 Commercial
207/209-211-212 Northern
Pacific Road
Brainerd MN 56401



website: www.AffinityRealEstate.com | email: info@affinityrealestate.com | office: 218-237-3333 | fax: 218-237-3377

Affinity
REAL ESTATE INC

\$0
MLS 7020720 Commercial
207/209-211-212 Northern
Pacific Road
Brainerd MN 56401



website: www.AffinityRealEstate.com | email: info@affinityrealestate.com | office: 218-237-3333 | fax:218-237-3377

Affinity
REAL ESTATE INC

\$0
MLS 7020720 Commercial
207/209-211-212 Northern
Pacific Road
Brainerd MN 56401



website: www.AffinityRealEstate.com | email: info@affinityrealestate.com | office: 218-237-3333 | fax:218-237-3377



\$0
MLS 7020720 Commercial
207/209-211-212 Northern
Pacific Road
Brainerd MN 56401