

71140551 0, Ironton, MN, 56455



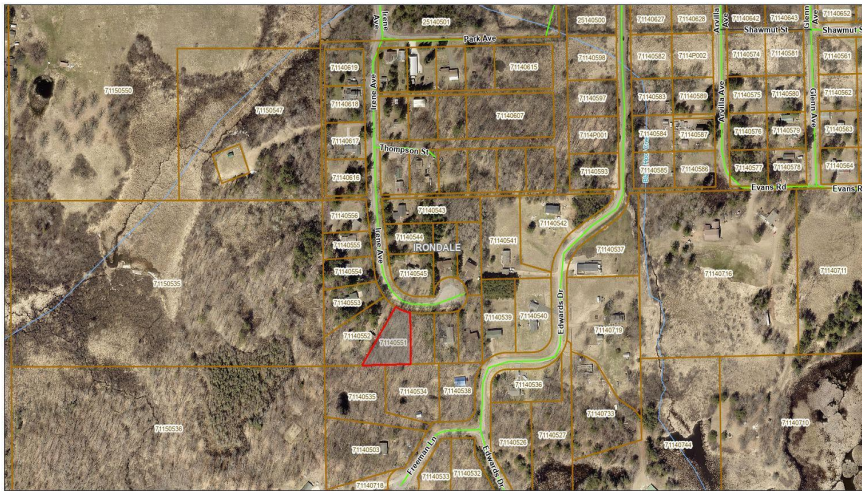
MLS 7020722 Land

\$39,900

0.67 Acres
Subdivided

TBD Lot 6 Irene Avenue
Ironton MN 56455

Status: Active



February 2, 2026

1:2762
0 0.03 0.07 0.13 mi
0 0.05 0.1 0.2 km

Grow Using MLS Property Information

Description:

Build your dream home on this private 0.67-acre wooded lot in Ironton's Country Acres subdivision, offering a prime edge-of-town location. This beautiful, level, and heavily treed parcel is ready for your vision and boasts a great location with easy access to area bike trails. Enjoy the convenience of paved streets and AVAILABLE UTILITIES, electric, natural gas, and cable. Zoned for single-family homes (mobile homes allowed with restrictions) and located in the desirable Crosby-Ironton School District. Don't miss this affordable opportunity.

Additional Details:

Lot Acres	0.67
Lot Dimensions	65x203x203x270
School District	904
Taxes	\$130
Taxes with Assessments	\$130
Tax Year	2025

Additional Features:

Driving Directions:

From Crosby at the 4 way stop, go West on HWY 210 to Left on Irene Ave. Go straight to "Country Acres" to property on Right.



Listed By:
Coldwell Banker Crown Realtors

Affinity Real Estate Inc. participates in the Regional Multiple Listing Service of Minnesota, Inc Broker Reciprocity (sm) program, allowing us to display other broker's listings on our website. All properties are subject to prior sale, change or withdrawal.



Call Affinity Real Estate

218-237-3333

info@affinityrealestate.com



Affinity Real Estate - 600 Park Avenue South - Park Rapids MN 56470

71140551 0, IRONTON, MN, 56455



February 2, 2026

1:2,762
0 0.03 0.06 0.09 0.12 mi
0 0.05 0.1 0.15 0.2 km

Click Here for Property Information



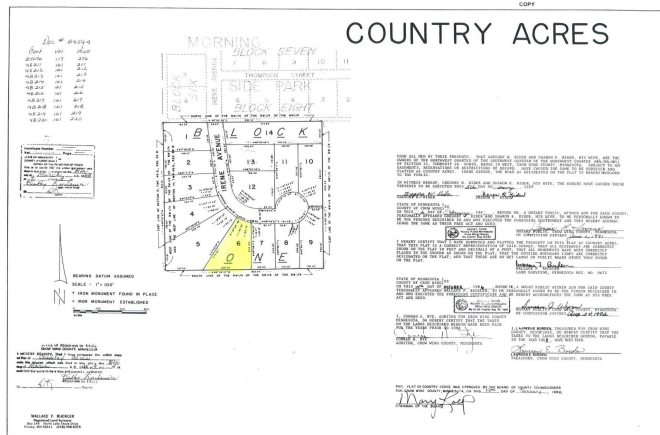
71140551 0, IRONTON, MN, 56455



February 2, 2026

1:994
0 0.01 0.02 0.04 0.07 mi
0 0.02 0.04 0.07 0.1 km

Click Here for Property Information



website: www.AffinityRealEstate.com | email: info@affinityrealestate.com | office: 218-237-3333 | fax: 218-237-3377

Affinity
REAL ESTATE INC

\$39,900
MLS 7020722 Land
TBD Lot 6 Irene Avenue
Ironton MN 56455



website: www.AffinityRealEstate.com | email: info@affinityrealestate.com | office: 218-237-3333 | fax: 218-237-3377



\$39,900
MLS 7020722 Land
TBD Lot 6 Irene Avenue
Ironton MN 56455