



MLS 7021089 Land

\$299,900

3.1 Acres
Raw Land

929 Dorado Drive
Pillager MN 56473

Status: Active

Description:

Don't miss this 3.1+ acre lot with 552 feet of frontage on Hwy 210. The lot has great visibility with the high traffic on Hwy 210. The back of the lot borders a tar cul-de-sac, and the front borders Hwy 210. The potential is endless.

Additional Details:

Lot Acres	3.1
Lot Dimensions	175x199x192x200
School District	726
Taxes	\$1,448
Taxes with Assessments	\$1,448
Tax Year	2025

Additional Features:

Driving Directions:

From Pillager, take Hwy 210 West to Pheasant Run to left on Dorado Dr N.



Listed By:
eXp Realty

Affinity Real Estate Inc. participates in the Regional Multiple Listing Service of Minnesota, Inc Broker Reciprocity (sm) program, allowing us to display other broker's listings on our website. All properties are subject to prior sale, change or withdrawal.



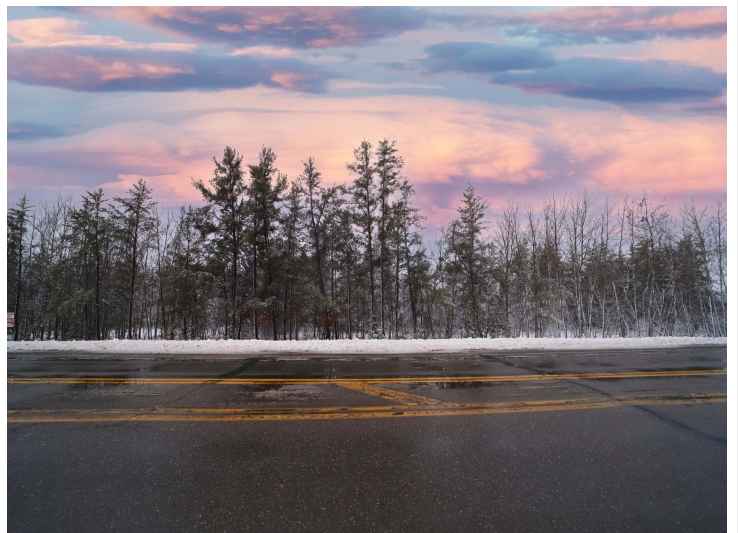
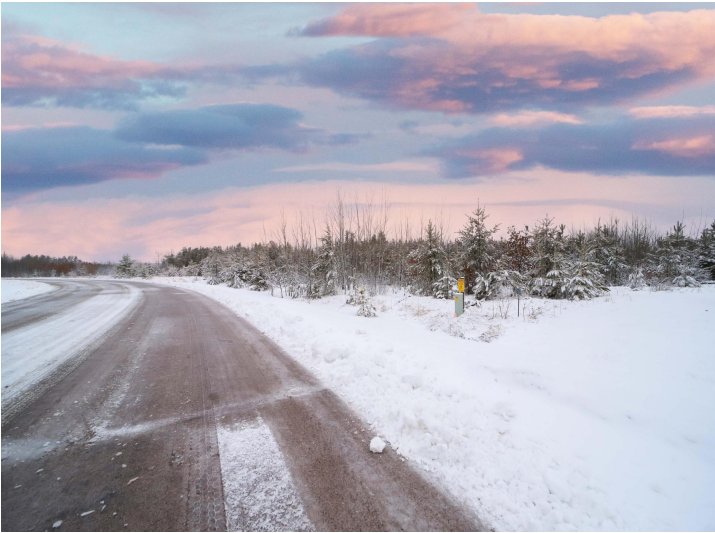
Call Affinity Real Estate

218-237-3333

info@affinityrealestate.com



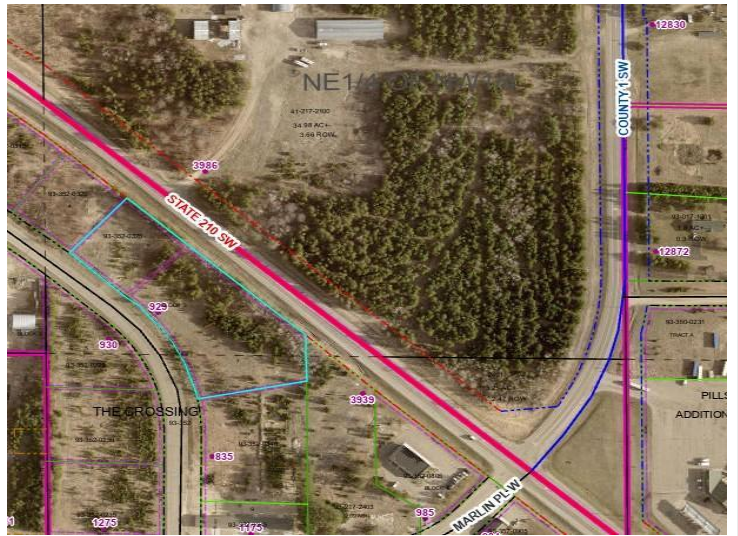
Affinity Real Estate - 600 Park Avenue South - Park Rapids MN 56470



website: www.AffinityRealEstate.com | email: info@affinityrealestate.com | office: 218-237-3333 | fax: 218-237-3377



\$299,900
 MLS 7021089 Land
 929 Dorado Drive
 Pillager MN 56473



website: www.AffinityRealEstate.com | email: info@affinityrealestate.com | office: 218-237-3333 | fax: 218-237-3377



\$299,900
 MLS 7021089 Land
 929 Dorado Drive
 Pillager MN 56473